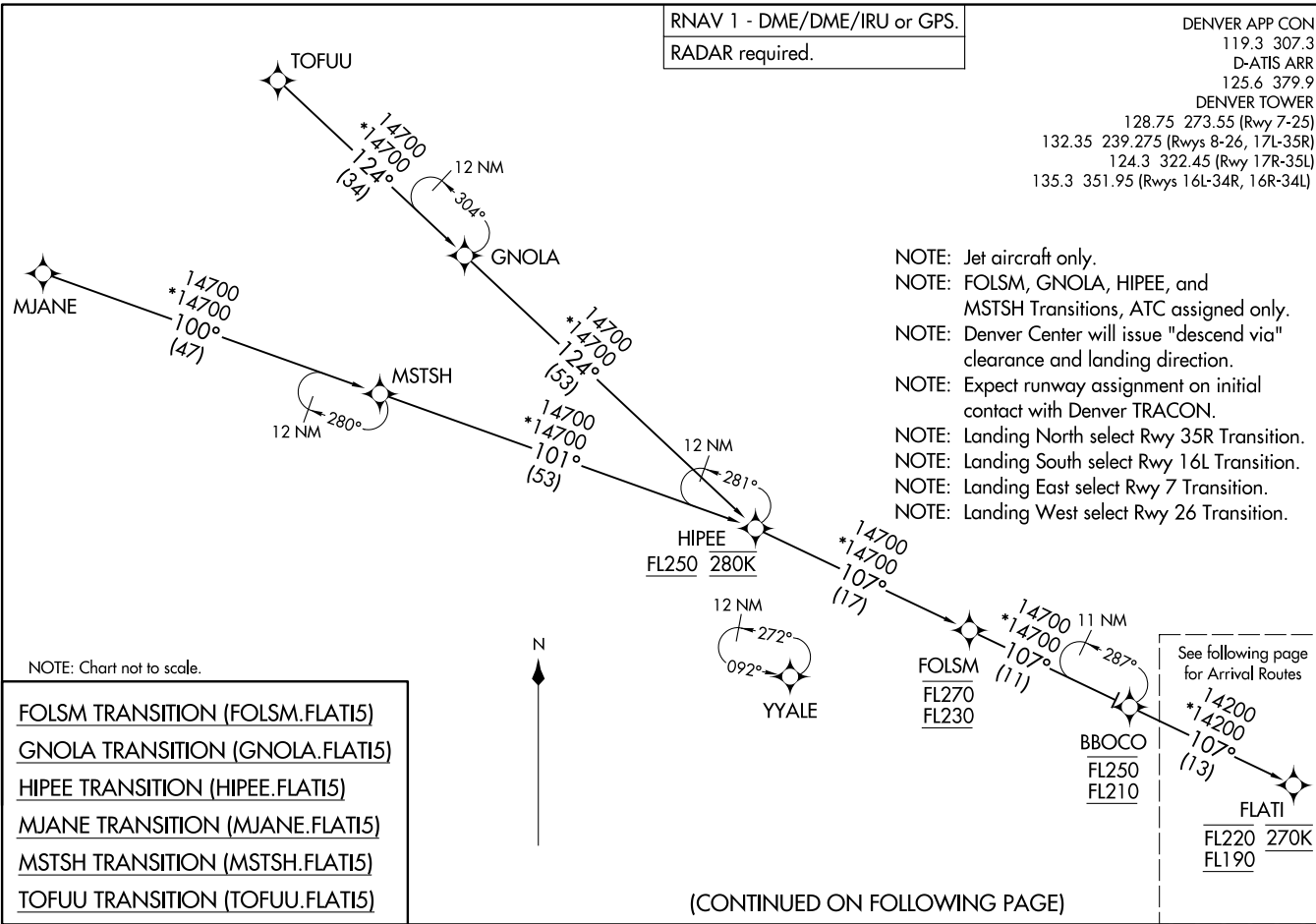


FLATI FIVE ARRIVAL (RNAV) Transition Routes
(FLATI.FLAT15) 12JUN25

DENVER, COLORADO
DENVER INTL (DEN)



RNAV 1 - DME/DME/IRU or GPS.
RADAR required.

DENVER APP CON
119.3 307.3
D-ATIS ARR
125.6 379.9
DENVER TOWER
128.75 273.55 (Rwy 7-25)
132.35 239.275 (Rwys 8-26, 17L-35R)
124.3 322.45 (Rwy 17R-35L)
135.3 351.95 (Rwys 16L-34R, 16R-34L)

- NOTE: Jet aircraft only.
- NOTE: FOLSOM, GNOLA, HIPEE, and MSTSH Transitions, ATC assigned only.
- NOTE: Denver Center will issue "descend via" clearance and landing direction.
- NOTE: Expect runway assignment on initial contact with Denver TRACON.
- NOTE: Landing North select Rwy 35R Transition.
- NOTE: Landing South select Rwy 16L Transition.
- NOTE: Landing East select Rwy 7 Transition.
- NOTE: Landing West select Rwy 26 Transition.

NOTE: Chart not to scale.

- FOLSOM TRANSITION (FOLSOM.FLAT15)
- GNOLA TRANSITION (GNOLA.FLAT15)
- HIPEE TRANSITION (HIPEE.FLAT15)
- MJANE TRANSITION (MJANE.FLAT15)
- MSTSH TRANSITION (MSTSH.FLAT15)
- TOFUU TRANSITION (TOFUU.FLAT15)

See following page for Arrival Routes

FLATI
FL220 270K
FL190

(CONTINUED ON FOLLOWING PAGE)

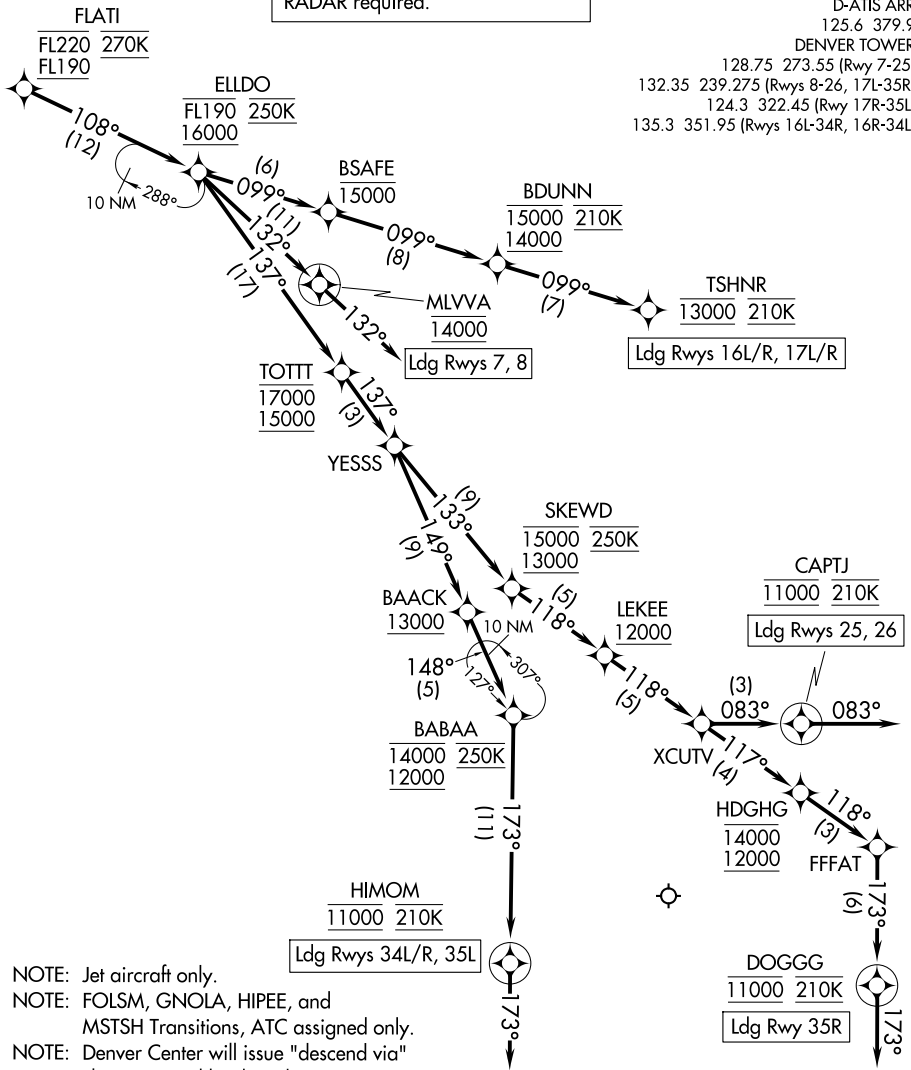
(FLATI.FLAT15) 25163
FLATI FIVE ARRIVAL (RNAV) Transition Routes
AL-9077 (FAA)

DENVER INTL (DEN)
DENVER, COLORADO

FLATI FIVE ARRIVAL (RNAV) Arrival Routes

RNAV 1 - DME/DME/IRU or GPS.
RADAR required.

DENVER APP CON
119.3 307.3
D-ATIS ARR
125.6 379.9
DENVER TOWER
128.75 273.55 (Rwy 7-25)
132.35 239.275 (Rwys 8-26, 17L-35R)
124.3 322.45 (Rwy 17R-35L)
135.3 351.95 (Rwys 16L-34R, 16R-34L)



- NOTE: Jet aircraft only.
- NOTE: FOLSM, GNOLA, HIPEE, and MSTSH Transitions, ATC assigned only.
- NOTE: Denver Center will issue "descend via" clearance and landing direction.
- NOTE: Expect runway assignment on initial contact with Denver TRACON.
- NOTE: Landing North select Rwy 35R Transition.
- NOTE: Landing South select Rwy 16L Transition.
- NOTE: Landing East select Rwy 7 Transition.
- NOTE: Landing West select Rwy 26 Transition.

(CONTINUED ON FOLLOWING PAGE)

NOTE: Chart not to scale.

SW-1, 19 MAR 2026 to 16 APR 2026

SW-1, 19 MAR 2026 to 16 APR 2026

FLATI FIVE ARRIVAL (RNAV) Arrival Routes

ARRIVAL ROUTE DESCRIPTION

From FLATI on track 108° to cross ELLDO between 16000 and FL190 and at 250K.

LANDING RUNWAYS 7, 8: From ELLDO on track 132° to cross MLVVA at 14000, then on track 132°. Expect RADAR vectors to final approach course.

LANDING RUNWAYS 16L/R, 17L/R: From ELLDO on track 099° to cross BSAFE at or below 15000, then on track 099° to cross BDUNN between 14000 and 15000 and at 210K, then on track 099° to cross TSHNR at 13000 and at 210K. Expect ILS or LOC RWY 16L, RWY 16R, RWY 17L, RWY 17R approach.

LANDING RUNWAYS 25, 26: From ELLDO on track 137° to cross TOTTT between 15000 and 17000, then on track 137° to YESSS, then on track 133° to cross SKEWD between 13000 and 15000 and at 250K, then on track 118° to cross LEKEE at or above 12000, then on track 118° to XCUTV, then on track 083° to cross CAPTJ at 11000 and at 210K, then on track 083°. Expect RADAR vectors to final approach course.

LANDING RUNWAYS 34L/R, 35L: From ELLDO on track 137° to cross TOTTT between 15000 and 17000, then on track 137° to YESSS, then on track 149° to cross BAACK at or above 13000, then on track 148° to cross BABAA between 12000 and 14000 and at 250K, then on track 173° to cross HIMOM at 11000 and at 210K, then on track 173°. Expect RADAR vectors to final approach course.

LANDING RUNWAY 35R: From ELLDO on track 137° to cross TOTTT between 15000 and 17000, then on track 137° to YESSS, then on track 133° to cross SKEWD between 13000 and 15000 and at 250K, then on track 118° to cross LEKEE at or above 12000, then on track 118° to XCUTV, then on track 117° to cross HDGHG between 12000 and 14000, then on track 118° to FFFAT, then on track 173° to cross DOGGG at 11000 and at 210K, then on track 173°. Expect RADAR vectors to final approach course.

LOST COMMUNICATIONS: In the event of lost communications prior to runway transition assignment, when DEN is landing south, proceed on the ILS RWY 16L, when DEN is landing north, proceed on the ILS RWY 34R.

SW-1, 19 MAR 2026 to 16 APR 2026

SW-1, 19 MAR 2026 to 16 APR 2026