

LOC/DME I-OUF <b>111.1</b> Chan <b>48</b>	APP CRS <b>353°</b>	Rwy Ldg <b>12000</b> TDZE <b>5354</b> Apt Elev <b>5434</b>
---	------------------------	--

# ILS RWY 34R (CAT II & III)

DENVER INTL (DEN)

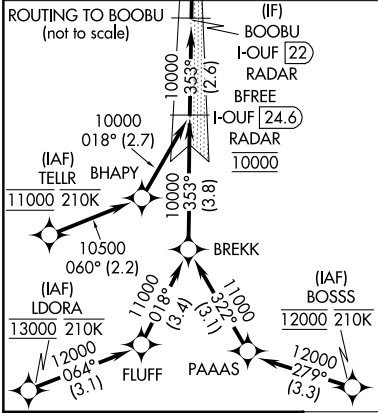
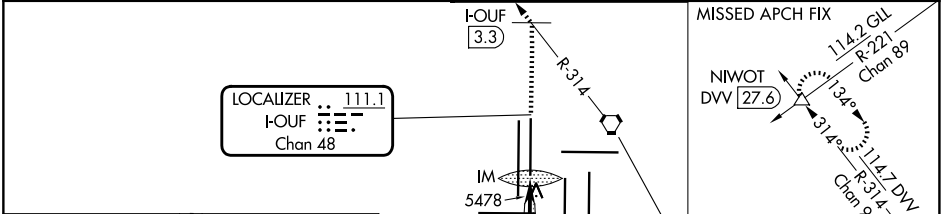
RNP APCH - GPS. From LDORA, BOSSS, TELLR.  
DME or RADAR required.

▼ CAT II: RVR 1000 authorized with specific OPSPEC, MSPEC or LOA approval and use of autoland or HUD to touchdown. Simultaneous approach authorized.

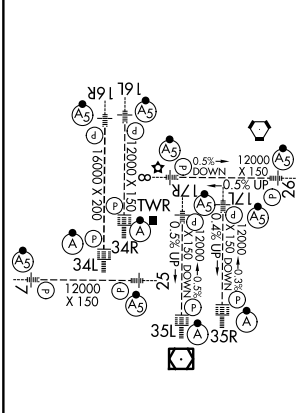
ALSF-2

MISSED APPROACH: Climb to 10000 on heading 353° to I-OUF 3.3 DME north of I-OUF and on DVV VORTAC R-314 to NIWOT INT/DVV 27.6 DME and hold.

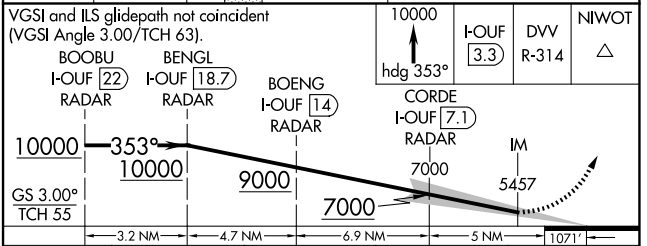
D-ATIS <b>125.6 379.9</b>	DENVER APP CON <b>119.3 307.3 (N)</b> <b>120.35 379.3 (S)</b>	DENVER TOWER <b>135.3 351.95</b>	GND CON <b>121.35 379.175 (W)</b> <b>121.85 377.1 (E)</b>
------------------------------	---	-------------------------------------	---



ELEV 5434 **D** TDZE 5354



HIRL all Rwys  
TDZL/RCLS Rwys 7, 16L, 16R, 17R, 26, 34L, 34R, 35L, 35R



CATEGORY	A	B	C	D
S-ILS 34R	CAT II RA 110/12 100 DA 5454			
S-ILS 34R	CAT III RVR 03			

**CATEGORY II & III ILS - SPECIAL AIRCREW & AIRCRAFT CERTIFICATION REQUIRED**

SW-1, 19 MAR 2026 to 16 APR 2026

SW-1, 19 MAR 2026 to 16 APR 2026