

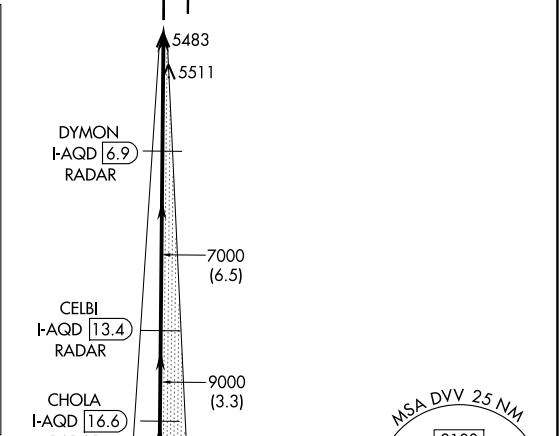
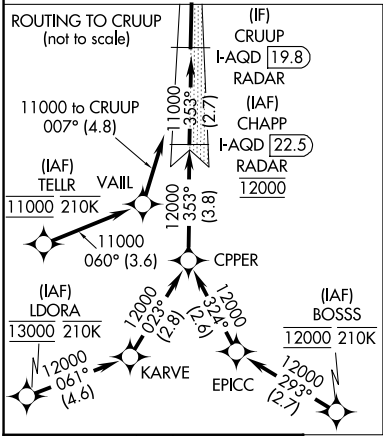
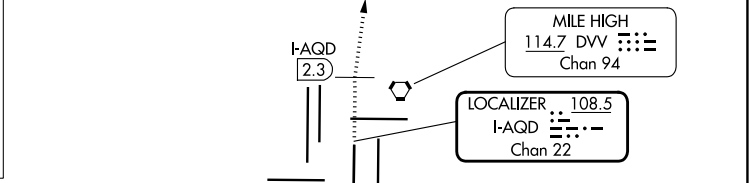
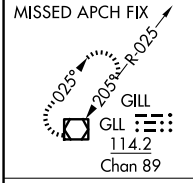
LOC/DME I-AQD 108.5 Chan 22	APP CRS 353°	Rwy Ldg TDZE Apt Elev	12000 5434 5434
---	------------------------	-----------------------------	--

ILS RWY 35L (CAT II & III)

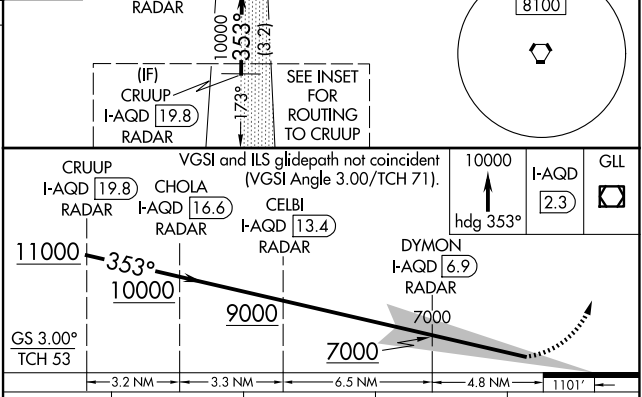
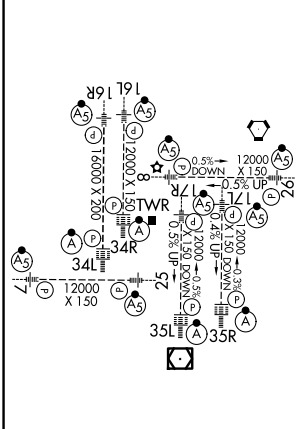
DENVER INTL (DEN)

RNP APCH - GPS. From BOSSS, LDORA or TELLR.		ALSIF-2 	MISSED APPROACH: Climb to 10000 on heading 353° to I-AQD 2.3 DME north of I-AQD and direct GLL VOR/DME and hold.
DME or RADAR required.			
<p>Simultaneous approach authorized. CAT II: RVR 1000 authorized with specific OPSPEC, MSPEC, or LOA approval and use of autoland or HUD to touchdown.</p>			

D-ATIS 125.6 379.9	DENVER APP CON 119.3 307.3 (N) 120.35 379.3 (S)	DENVER TOWER 124.3 322.45	GND CON 121.35 379.175 (W) 121.85 377.1 (E)
------------------------------	---	-------------------------------------	---



ELEV 5434	D	TDZE 5434
-----------	----------	-----------



CRUUP I-AQD 19.8	CHOLA I-AQD 16.6	CELBI I-AQD 13.4	DYMON I-AQD 6.9	10000	I-AQD 2.3	GLL
<p>VGSI and ILS glidepath not coincident (VGSI Angle 3.00/TCH 71).</p>						
<p>GS 3.00° TCH 53</p>						
<p>3.2 NM 3.3 NM 6.5 NM 4.8 NM 1101'</p>						
CATEGORY	A	B	C	D		
S-ILS 35L	CAT II RA 115/12 100 DA 5534					
S-ILS 35L	CAT III RVR 03					
<p>CATEGORY II & III ILS - SPECIAL AIRCREW & AIRCRAFT CERTIFICATION REQUIRED</p>						

SW-1, 19 MAR 2026 to 16 APR 2026

SW-1, 19 MAR 2026 to 16 APR 2026