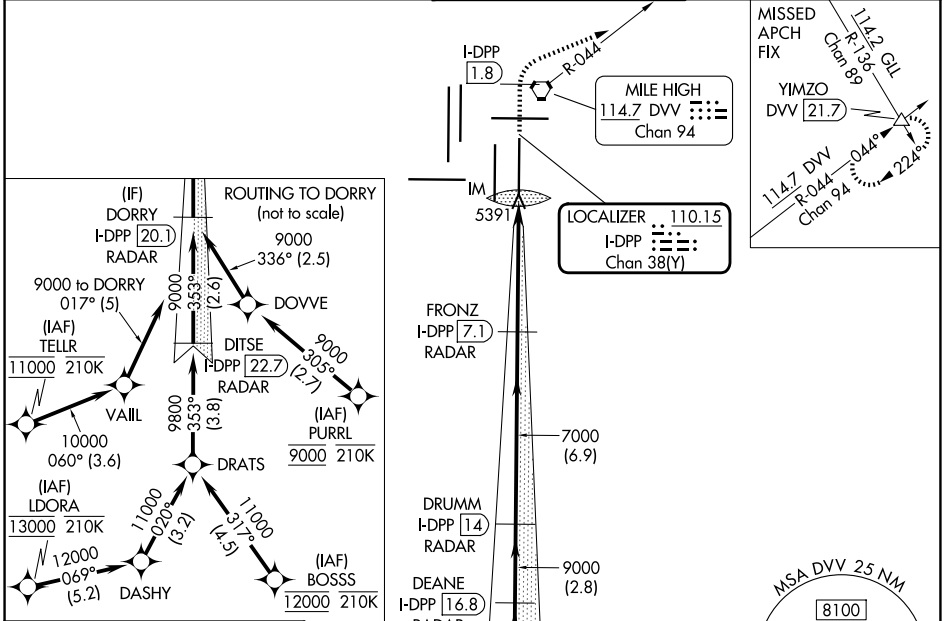


LOC/DME I-DPP 110.15 Chan 38(Y)	APP CRS 353°	Rwy Ldg 12000 TDZE 5370 Apt Elev 5434
---	------------------------	--

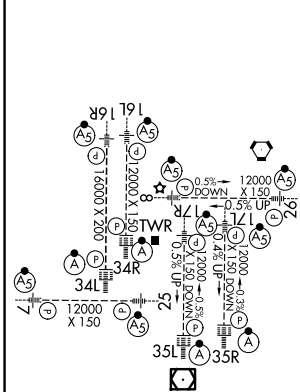
ILS RWY 35R (SA CAT I)

DENVER INTL (DEN)

RNP APCH - GPS. From BOSSS, LDORA, PURRL or TELLR.		ALSF-2 	MISSED APPROACH: Climb to 10000 on heading 353° to 1.8 DME north of I-DPP and continue climb on heading 060° to DVV VORTAC R-044 to YIMZO INT/DVV 21.7 DME and hold.
DME or RADAR required. Requires specific OPSPEC, MSPEC, or LOA approval. Simultaneous approach authorized.			
D-ATIS 125.6 379.9	DENVER APP CON 119.3 307.3 (N) 120.35 379.3 (S)	DENVER TOWER 132.35 239.275	GND CON 121.35 379.175 (W) 121.85 377.1 (E)



ELEV 5434	D	TDZE 5370
-----------	----------	-----------



HIRL all Rwys
TDZL/RCLS Rwys 7, 16L, 16R, 17R, 26, 34L, 34R, 35L, 35R

VGSi and ILS glidepath not coincident (VGSi Angle 3.00/TCH 66).				
DORRY I-DPP 20.1 RADAR	DEANE I-DPP 16.8 RADAR	DRUMM I-DPP 14 RADAR	FRONZ I-DPP 7.1 RADAR	YIMZO Δ
9000	9000	9000	7000	
GS 3.00° TCH 55		hdg 353°		
3.2 NM		2.8 NM		6.9 NM
CATEGORY A		CATEGORY B		CATEGORY C
S-ILS 35R		RA 161/14 150 DA 5520		

SA CATEGORY I ILS - SPECIAL AIRCREW & AIRCRAFT CERTIFICATION REQUIRED

SW-1, 19 MAR 2026 to 16 APR 2026

SW-1, 19 MAR 2026 to 16 APR 2026