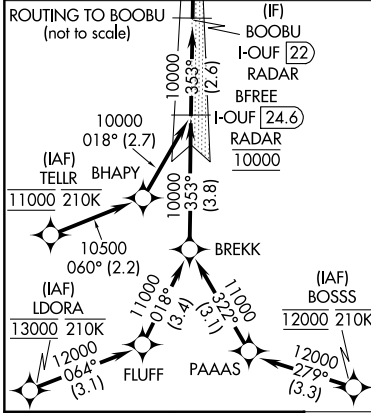
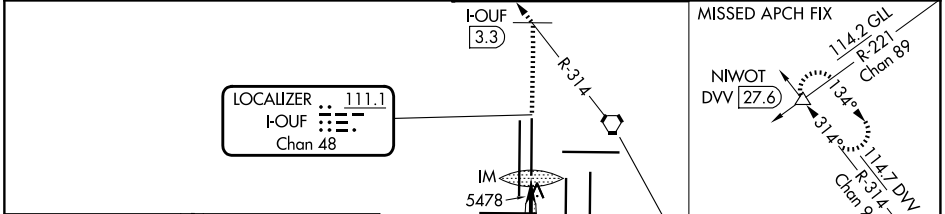


LOC/DME I-OUF 111.1 Chan 48	APP CRS 353°	Rwy Ldg TDZE 5354 Apt Elev 5434	12000
---	------------------------	---	--------------

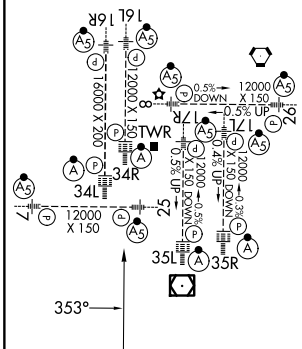
ILS or LOC RWY 34R

DENVER INTL (DEN)

RNP APCH - GPS. From LDORA, BOSSS, TELLR. DME or RADAR required.		ALSF-2 	MISSED APPROACH: Climb to 10000 on heading 353° to I-OUF 3.3 DME north of I-OUF and on DVV VORTAC R-314 to NIWOT INT/DVV 27.6 DME and hold.
Simultaneous approach authorized. For inop ALS, increase S-LOC Cat C and D visibility to RVR 5500.			
D-ATIS 125.6 379.9	DENVER APP CON 119.3 307.3 (N) 120.35 379.3 (S)	DENVER TOWER 135.3 351.95	GND CON 121.35 379.175 (W) 121.85 377.1(E)



ELEV 5434	D	TDZE 5354
TDZL/RCLS Rwws 7, 16L, 16R, 17R, 26, 34L, 34R, 35L, 35R		
HIRL all Rwws		



FAF to MAP 5 NM					
Knots	60	90	120	150	180
Min:Sec	5:00	3:20	2:30	2:00	1:40

ILS or LOC RWY 34R

SW-1, 19 MAR 2026 to 16 APR 2026

SW-1, 19 MAR 2026 to 16 APR 2026