

LOC/DME I-AQD <b>108.5</b> Chan <b>22</b>	APP CRS <b>353°</b>	Rwy Ldg TDZE Apt Elev <b>12000</b> <b>5434</b> <b>5434</b>
---	------------------------	---

# ILS or LOC RWY 35L

DENVER INTL (DEN)

RNP APCH - GPS. From BOSSS, LDORA or TELLR.  
DME or RADAR required.

ALSF-2  
MISSED APPROACH: Climb to 10000 on heading 353° to I-AQD 2.3 DME north of I-AQD and direct GLL VOR/DME and hold.

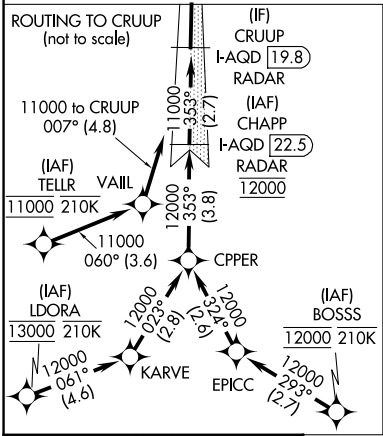
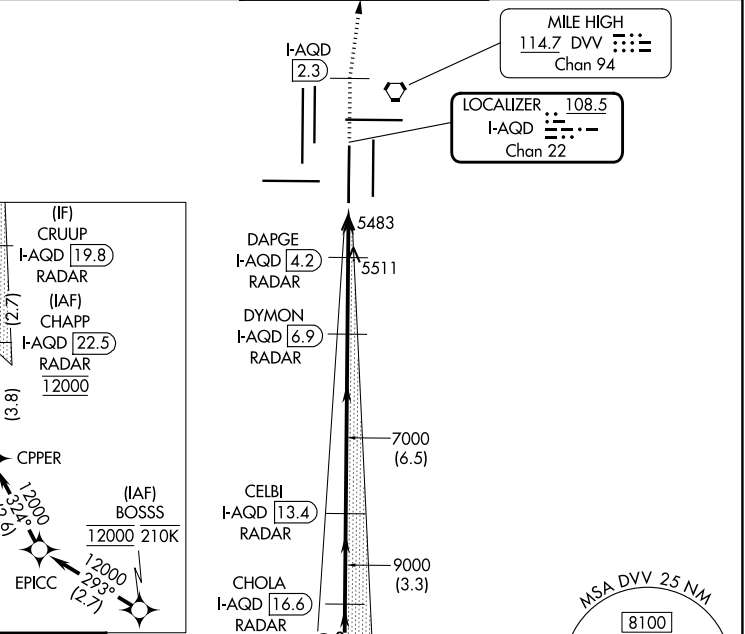
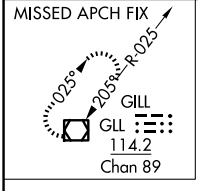
Simultaneous approach authorized.

D-ATIS  
**125.6 379.9**

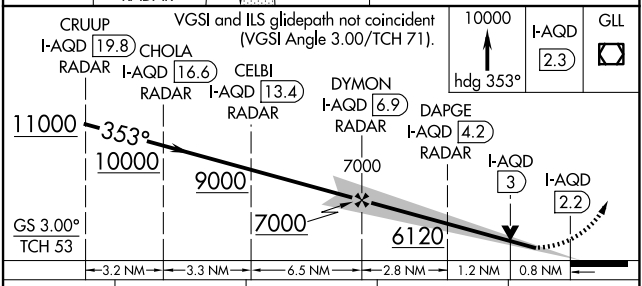
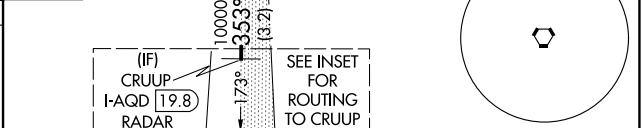
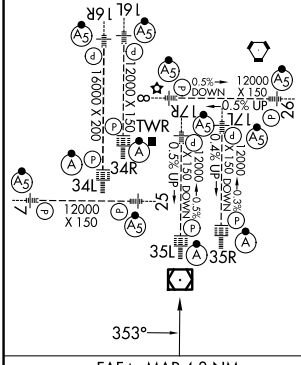
DENVER APP CON  
**119.3 307.3 (N)**  
**120.35 379.3 (S)**

DENVER TOWER  
**124.3 322.45**

GND CON  
**121.35 379.175 (W)**  
**121.85 377.1 (E)**



ELEV 5434 TDZE 5434  
TDZL/RCLS Rwy 7, 16L, 16R, 17R, 26, 34L, 34R, 35L, 35R  
HIRL all Rwy



CATEGORY	A	B	C	D
S-ILS 35L	5634/18 200 (200-½)			
S-LOC 35L	5760/24	326 (400-½)	5760/26	326 (400-½)

FAF to MAP 4.8 NM

Knots	60	90	120	150	180
Min:Sec	4:48	3:12	2:24	1:55	1:36

SW-1, 19 MAR 2026 to 16 APR 2026

SW-1, 19 MAR 2026 to 16 APR 2026