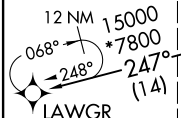
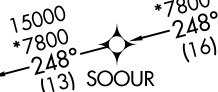
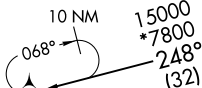
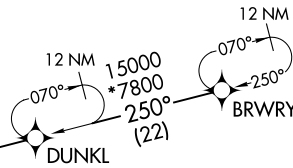
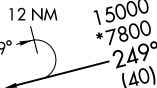
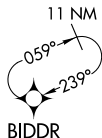
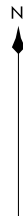


RNAV 1- DME/DME/IRU or GPS.

RADAR required.

DENVER APP CON
124.95 346.4
D-ATIS ARR
125.6 379.9
DENVER TOWER
128.75 273.55 (Rwy 7-25)
132.35 239.275 (Rwys 8-26, 17L-35R)
124.3 322.45 (Rwy 17R-35L)
135.3 351.95 (Rwys 16L-34R, 16R-34L)



LAWGR
FL220 280K
FL190

See following page
for arrival routes

- NOTE: Jet aircraft only.
- NOTE: Denver Center will issue "descend via" clearance and landing direction.
- NOTE: DUNKL, KOLSH, PLZNR, SOOUR, MARZN, and LAWGR Transitions, ATC assigned only.
- NOTE: Expect runway assignment on initial contact with Denver TRACON.
- NOTE: Landing north select Rwy 35R Transition.
- NOTE: Landing south select Rwy 17R Transition.
- NOTE: Landing east select Rwy 7 Transition.
- NOTE: Landing west select Rwy 26 Transition.

NOTE: Chart not to scale.

(CONTINUED ON FOLLOWING PAGE)

- BRWRY TRANSITION (BRWRY.LAWGR4)
- DUNKL TRANSITION (DUNKL.LAWGR4)
- KOLSH TRANSITION (KOLSH.LAWGR4)
- MARZN TRANSITION (MARZN.LAWGR4)
- PLZNR TRANSITION (PLZNR.LAWGR4)
- SOOUR TRANSITION (SOOUR.LAWGR4)

LAWGR FOUR ARRIVAL (RNAV)
(LAWGR.LAWGR4) 12UNJ25

Transition Routes

DENVER, COLORADO
DENVER INTL (DEN)

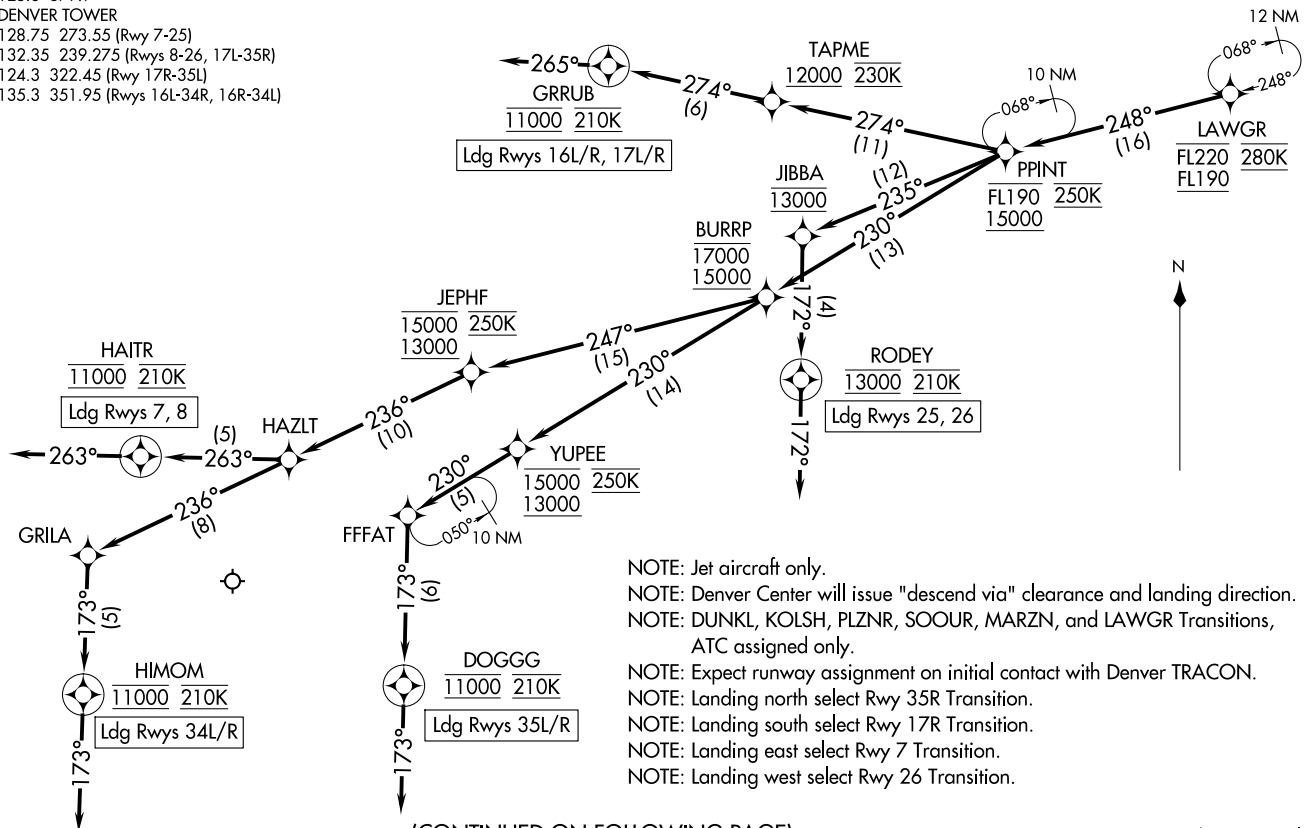
(LAWGR.LAWGR4) 25133

Transition Routes
AL-9077 (FAA)

DENVER INTL (DEN)
DENVER, COLORADO

RNAV 1- DME/DME/IRU or GPS.
RADAR required.

DENVER APP CON
124.95 346.4
D-ATIS ARR
125.6 379.9
DENVER TOWER
128.75 273.55 (Rwy 7-25)
132.35 239.275 (Rwys 8-26, 17L-35R)
124.3 322.45 (Rwy 17R-35L)
135.3 351.95 (Rwys 16L-34R, 16R-34L)



LAWGR FOUR ARRIVAL (RNAV) Arrival Routes
(LAWGR, LAWGR4) 12UN25

DENVER, COLORADO
DENVER INTL (DEN)

(LAWGR, LAWGR4) 25163
LAWGR FOUR ARRIVAL (RNAV) Arrival Routes
AL-9077 (FAA)

DENVER INTL (DEN)
DENVER, COLORADO

- NOTE: Jet aircraft only.
- NOTE: Denver Center will issue "descend via" clearance and landing direction.
- NOTE: DUNKL, KOLSH, PLZNR, SOOUR, MARZN, and LAWGR Transitions, ATC assigned only.
- NOTE: Expect runway assignment on initial contact with Denver TRACON.
- NOTE: Landing north select Rwy 35R Transition.
- NOTE: Landing south select Rwy 17R Transition.
- NOTE: Landing east select Rwy 7 Transition.
- NOTE: Landing west select Rwy 26 Transition.

(CONTINUED ON FOLLOWING PAGE)

NOTE: Chart not to scale.

ARRIVAL ROUTE DESCRIPTION

From LAWGR on track 248° to cross PPINT between 15000 and FL190 and at 250K.

LANDING RUNWAYS 7, 8: From PPINT on track 230° to cross BURRP between 15000 and 17000, then on track 247° to cross JEPHF between 13000 and 15000 and at 250K, then on track 236° to HAZLT, then on track 263° to cross HAIR at 11000 and at 210K, then on track 263°. Expect RADAR vectors to final approach course.

LANDING RUNWAYS 16L/R, 17L/R: From PPINT on track 274° to cross TAPME at or above 12000 and at 230K, then on track 274° to cross GRRUB at 11000 and at 210K, then on track 265°. Expect RADAR vectors to final approach course.

LANDING RUNWAYS 25, 26: From PPINT on track 235° to cross JIBBA at 13000, then on track 172° to cross RODEY at 13000 and at 210K, then on track 172°. Expect RADAR vectors to final approach course.

LANDING RUNWAYS 34L/R: From PPINT on track 230° to cross BURRP between 15000 and 17000, then on track 247° to cross JEPHF between 13000 and 15000 and at 250K, then on track 236° to HAZLT, then on track 236° to GRILA, then on track 173° to cross HIMOM at 11000 and at 210K, then on track 173°. Expect RADAR vectors to final approach course.

LANDING RUNWAYS 35L/R: From PPINT on track 230° to cross BURRP between 15000 and 17000, then on track 230° to cross YUPEE between 13000 and 15000 and at 250K, then on track 230° to FFFAT, then on track 173° to cross DOGGG at 11000 and at 210K, then on track 173°. Expect RADAR vectors to final approach course.

LOST COMMUNICATIONS: In the event of lost communications prior to runway transition assignment, when DEN is landing south, execute the ILS RWY 17R, when DEN is landing north, execute the ILS RWY 35R.

SW-1, 19 MAR 2026 to 16 APR 2026

SW-1, 19 MAR 2026 to 16 APR 2026