

POWER ONE ARRIVAL
(POWDR.POWDR1) 30JAN20

DENVER APP CON
120.35 379.3
APA ATIS
120.3
BJC ATIS
126.25
CFO ATIS
119.025
DEN D-ATIS ARR
125.6 379.9
KBKF ATIS*
119.675 259.3

GILL
114.2 GLL
Chan 89

NORTHERN
COLORADO
RGNL

GREELEY-WELD
COUNTY

MILE HIGH
114.7 DVV
Chan 94

ROCKY
MOUNTAIN
METRO

DENVER
INTL

DENVER
117.9 DEN
Chan 126

COLORADO AIR AND
SPACE PORT

BUCKLEY
SPACE FORCE
BASE

FALCON
116.3 FQF
Chan 110

CENTENNIAL

POWDR
VERTICAL NAVIGATION
PLANNING INFORMATION

TURBOJETS: Expect FL190 250K
or as assigned by ATC.

KREMMLING
113.8 RLG
Chan 85

RED TABLE
113.0 DBL
Chan 77

GRAND JUNCTION
112.4 JNC
Chan 71

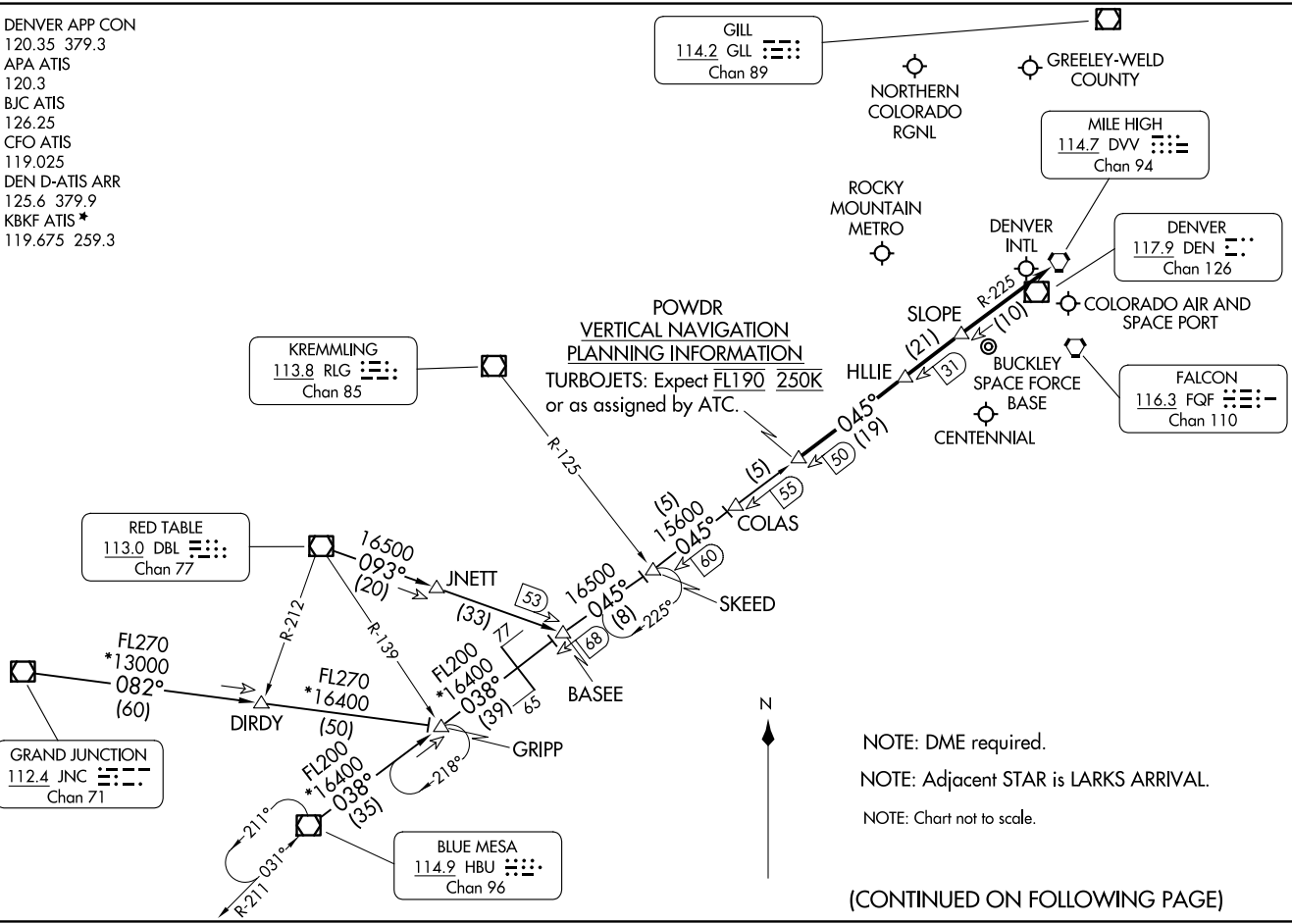
BLUE MESA
114.9 HBU
Chan 96

DENVER, COLORADO

(POWDR.POWDR1) 23334
POWER ONE ARRIVAL

AL-9077 (FAA)

DENVER, COLORADO



NOTE: DME required.
NOTE: Adjacent STAR is LARKS ARRIVAL.
NOTE: Chart not to scale.

(CONTINUED ON FOLLOWING PAGE)

ARRIVAL ROUTE DESCRIPTION

BLUE MESA TRANSITION (HBU.POWDR1): From over HBU VOR/DME on HBU R-038 to GRIPP then on HBU R-038 and DVV R-225 to BASEE then on DVV R-225 to POWDR. Thence. . . .

GRAND JUNCTION TRANSITION (JNC.POWDR1): From over JNC VOR/DME on JNC R-082 to GRIPP; then on HBU R-038 and DVV R-225 to BASEE then on DVV R-225 to POWDR. Thence. . . .

RED TABLE TRANSITION (DBL.POWDR1): From over DBL VOR/DME on DBL R-093 and DVV R-225 to POWDR. Thence. . . .

. . . .from over POWDR on the DVV VORTAC R-225 to HLLIE, then on DVV VORTAC R-225 to SLOPE, then on DVV VORTAC R-225 to DVV. Expect RADAR vectors to the final approach course at or before DVV VORTAC.

SW-1, 19 MAR 2026 to 16 APR 2026

SW-1, 19 MAR 2026 to 16 APR 2026