

RNAV (RNP) Z RWY 16L

DENVER INTL (DEN)

| | | |
|-------------|----------|--------------|
| APP CRS | Rwy Ldg | 12000 |
| 173° | TDZE | 5357 |
| | Apt Elev | 5434 |

RNP AR APCH - GPS. Authorization required.

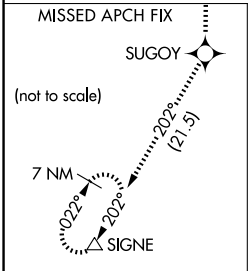
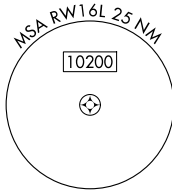
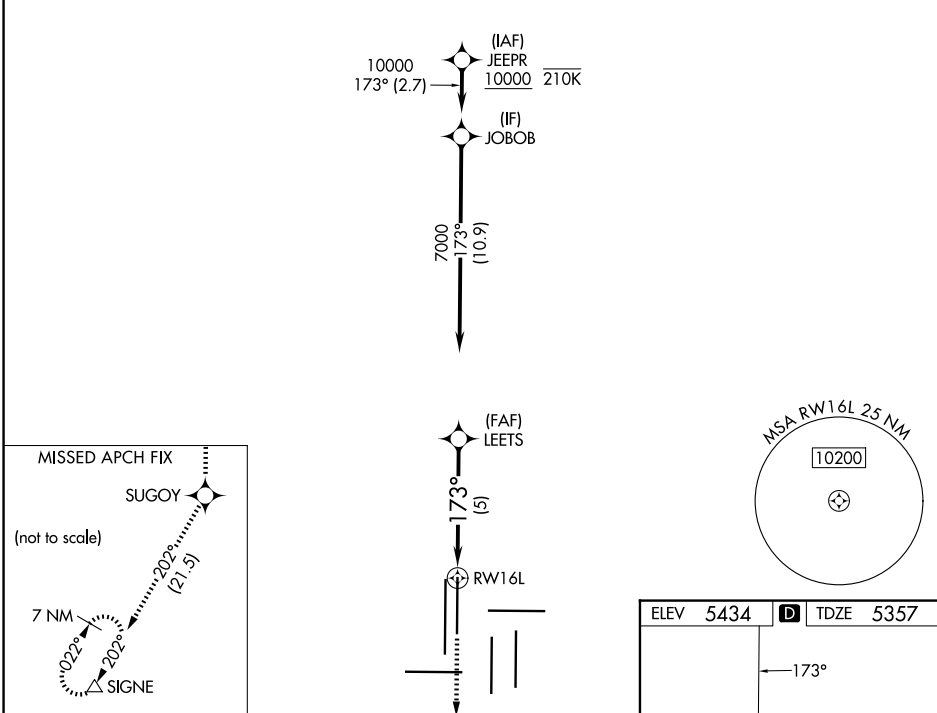
Simultaneous approach authorized. For uncompensated Baro-VNAV systems, procedure NA below -26°C or above 54°C. For inop ALS, increase RNP 0.10 all Cats visibility to RVR 4000 and RNP 0.30 all Cats visibility to RVR 5000.

MALSR

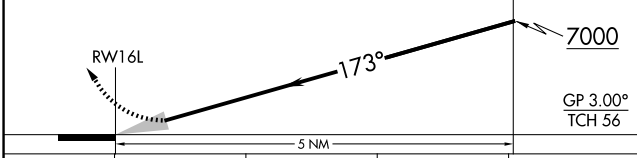


MISSED APPROACH: Climb to 10000 direct SUGOY and on track 202° to SIGNE and hold.

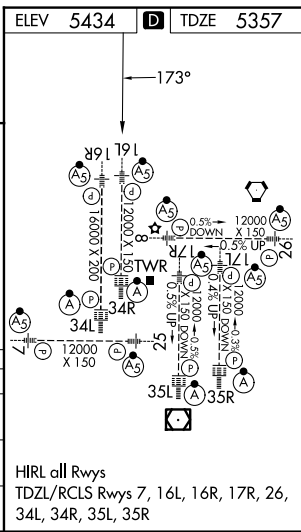
| | | | |
|------------------------------|---|-------------------------------------|---|
| D-ATIS 125.6 379.9 | DENVER APP CON 119.3 307.3 (N) 120.35 379.3 (S) | DENVER TOWER 135.3 351.95 | GND CON 121.35 379.175 (W) 121.85 377.1 (E) |
|------------------------------|---|-------------------------------------|---|



| | | | | |
|-------|-------|---------|-------|--|
| 10000 | SUGOY | tr 202° | SIGNE | VGSI and RNAV glidepath not coincident (VGSI Angle 3.00/TCH 71). |
| | | | | LEETS |



| | | | | |
|-------------|---------|---|-------------|---|
| CATEGORY | A | B | C | D |
| RNP 0.10 DA | 5617/24 | | 260 (200-½) | |
| RNP 0.30 DA | 5683/26 | | 326 (300-½) | |



HIRL all Rwys
TDZL/RCLS Rwys 7, 16L, 16R, 17R, 26, 34L, 34R, 35L, 35R

SW-1, 19 MAR 2026 to 16 APR 2026

SW-1, 19 MAR 2026 to 16 APR 2026