

APP CRS 173°	Rwy Ldg TDZE Apt Elev	12000 5339 5434
------------------------	-----------------------------	--

RNAV (RNP) Z RWY 17L

DENVER INTL (DEN)

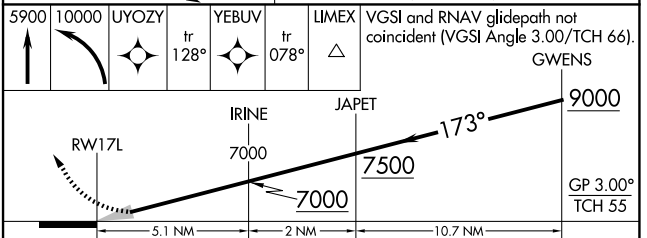
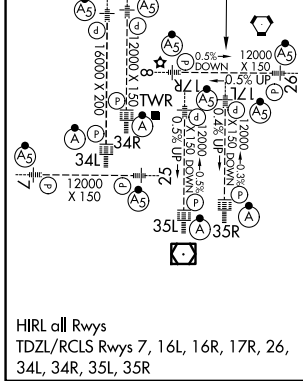
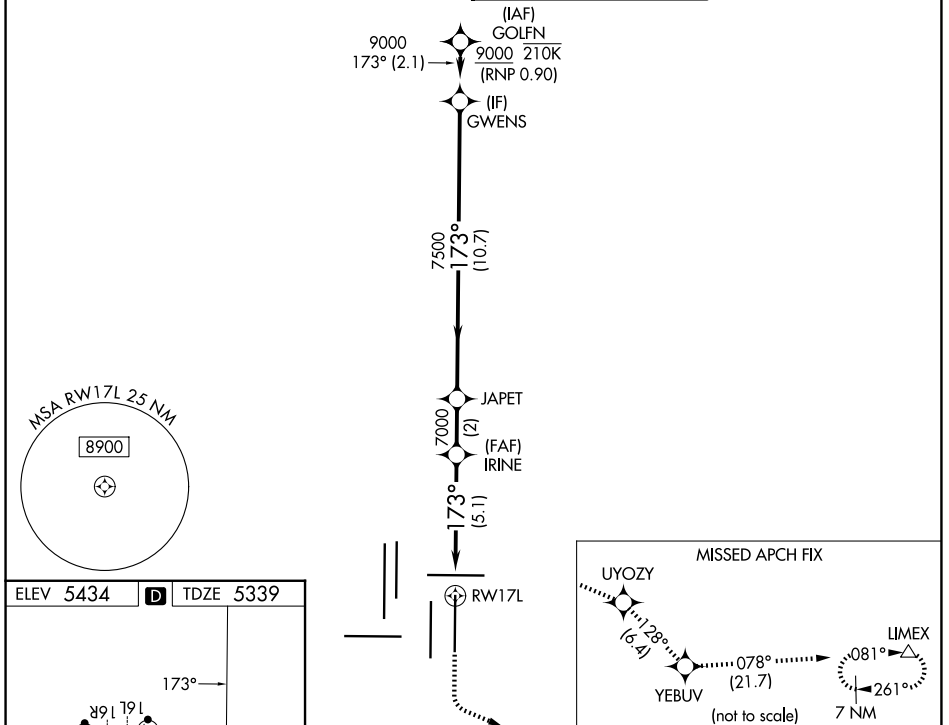
RNP AR APCH - GPS, min RNP 0.90. Authorization required.

For uncompensated Baro-VNAV systems, procedure NA below -26°C or above 54°C. Simultaneous approach authorized. For inop ALS, increase RNP 0.10 all Cats visibility to RVR 4500 and RNP 0.30 all Cats visibility to RVR 5500.

MALSR

MISSED APPROACH: Climb to 5900, then climbing left turn to 10000 UYOZY and track 128° to YEBUV and track 078° to LIMEX and track 078° to LIMEX and hold.

D-ATIS 125.6 379.9	DENVER APP CON 119.3 307.3 (N) 120.35 379.3 (S)	DENVER TOWER 132.35 239.275	GND CON 121.35 379.175 (W) 121.85 377.1 (E)
------------------------------	---	---------------------------------------	---



5900	10000	UYOZY	tr 128°	YEBUV	tr 078°	LIMEX	VGSI and RNAV glidepath not coincident (VGSI Angle 3.00/TCH 66).
							GWENS
		IRINE	JAPET	RWY 17L		9000	GP 3.00°
		7000	7500				TCH 55
				5.1 NM		2 NM	
						10.7 NM	
CATEGORY	A		B		C		D
RNP 0.10 DA			5600/24		261 (200-1/2)		
RNP 0.30 DA			5716/35		377 (300-3/4)		

AUTHORIZATION REQUIRED

SW-1, 19 MAR 2026 to 16 APR 2026

SW-1, 19 MAR 2026 to 16 APR 2026