

APP CRS	Rwy Ldg	<b>12000</b>
<b>173°</b>	TDZE	<b>5392</b>
	Apt Elev	<b>5434</b>

# RNAV (RNP) Z RWY 17R

DENVER INTL (DEN)

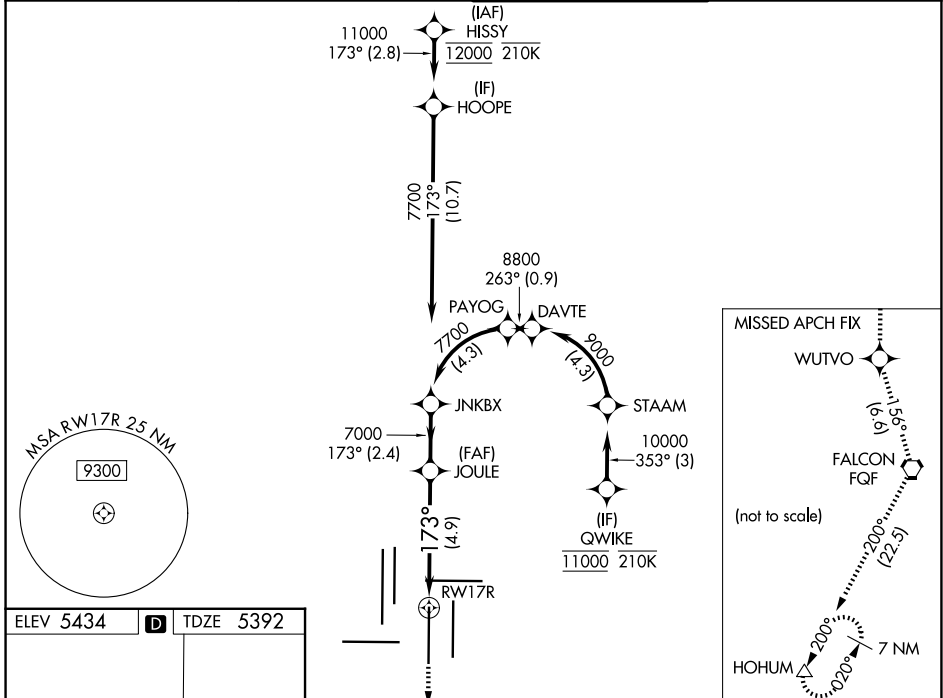
RNP AR APCH - GPS. Authorization required. From STAAM or PAYOG: RF.

Simultaneous approach authorized. For uncompensated Baro-VNAV systems, procedure NA below -26°C or above 54°C. For inop ALS, increase RNP 0.30 all Cats visibility to 1½ SM.

MALSR

MISSED APPROACH: Climb to 11000 direct WUTVO and track 156° to FGF VORTAC and track 200° to HOHUM and hold.

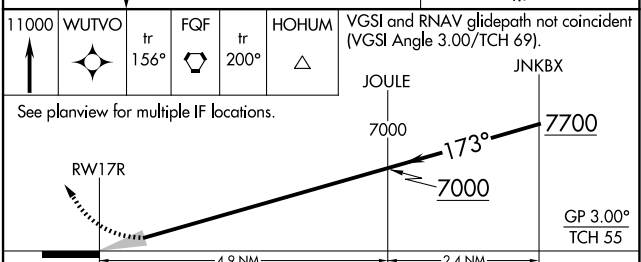
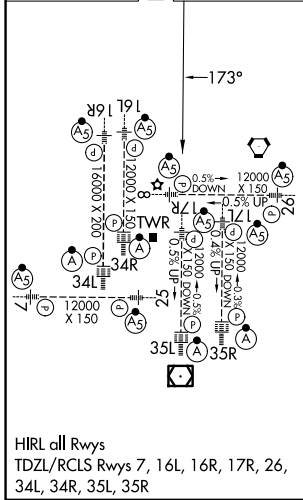
D-ATIS <b>125.6 379.9</b>	DENVER APP CON <b>119.3 307.3 (N)</b> <b>120.35 379.3 (S)</b>	DENVER TOWER <b>124.3 322.45</b>	GND CON <b>121.35 379.175 (W)</b> <b>121.85 377.1 (E)</b>
------------------------------	---	-------------------------------------	---



SW-1, 19 MAR 2026 to 16 APR 2026

SW-1, 19 MAR 2026 to 16 APR 2026

ELEV 5434	<b>D</b>	TDZE 5392
-----------	----------	-----------



11000	WUTVO	tr 156°	FGF	tr 200°	HOHUM	VGSI and RNAV glidepath not coincident (VGSI Angle 3.00/TCH 69).	JOULE	JNKBX
See planview for multiple IF locations.							7000	7700
							7000	GP 3.00° TCH 55
							4.9 NM	2.4 NM
CATEGORY	A		B		C		D	
RNP 0.10 DA	5722/26		330 (300-½)					
RNP 0.30 DA	5894/55		502 (500-1)					

**AUTHORIZATION REQUIRED**