

RNAV (RNP) Z RWY 34L

DENVER INTL (DEN)

| | |
|------------------------|-------------------------|
| APP CRS 353° | Rwy Ldg 16000 |
| | TDZE 5327 |
| | Apt Elev 5434 |

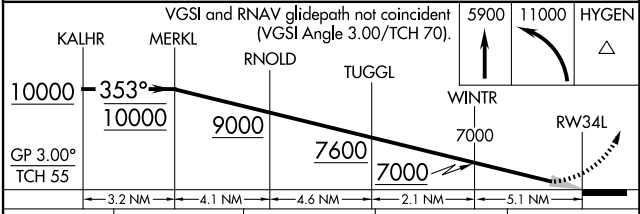
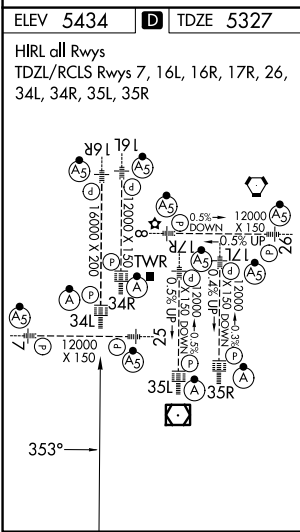
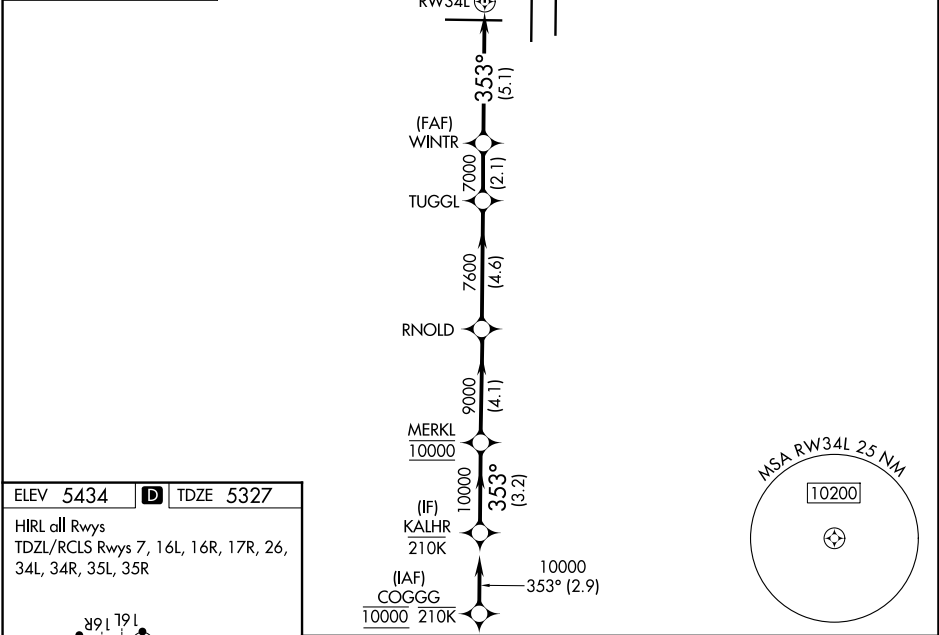
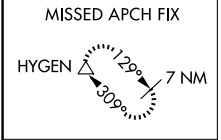
RNP AR APCH - GPS. Authorization required.

Simultaneous approach authorized. For uncompensated Baro-VNAV systems, procedure NA below -26°C or above 54°C. For inop ALS, increase RNP 0.10 all Cats visibility to RVR 4000.

ALSF-2

MISSED APPROACH: Climb to 5900 then climbing left turn to 11000 direct HYGEN and hold.

| | | | |
|------------------------------|---|-------------------------------------|---|
| D-ATIS 125.6 379.9 | DENVER APP CON 119.3 307.3 (N) 120.35 379.3 (S) | DENVER TOWER 135.3 351.95 | GND CON 121.35 379.175 (W) 121.85 377.1 (E) |
|------------------------------|---|-------------------------------------|---|



| | | | | | |
|--------------------|--------|---------|--------------|--------|--------|
| GP 3.00° TCH 55 | 3.2 NM | 4.1 NM | 4.6 NM | 2.1 NM | 5.1 NM |
| CATEGORY | A | B | C | D | |
| RNP 0.10 DA | | 5587/24 | 260 (200-½%) | | |
| RNP 0.20 DA | | 5720/35 | 393 (300-¾%) | | |
| RNP 0.30 DA | | 5782/45 | 455 (400-¾%) | | |

AUTHORIZATION REQUIRED

SW-1, 19 MAR 2026 to 16 APR 2026

SW-1, 19 MAR 2026 to 16 APR 2026