

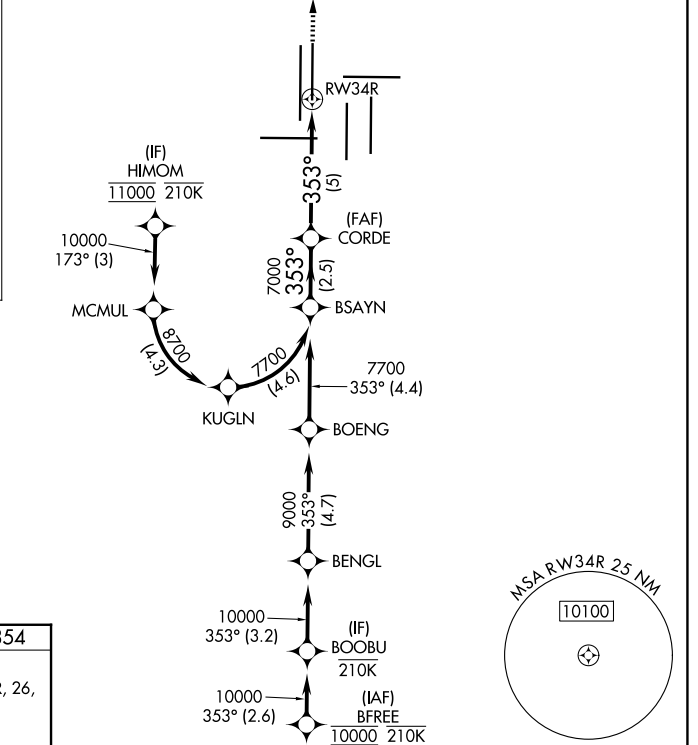
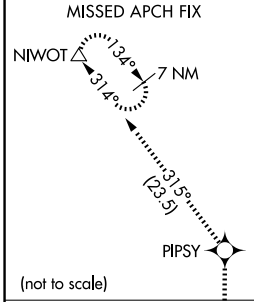
APP CRS 353°	Rwy Ldg TDZE Apt Elev	12000 5354 5434
------------------------	-----------------------------	--

RNAV (RNP) Z RWY 34R

DENVER INTL (DEN)

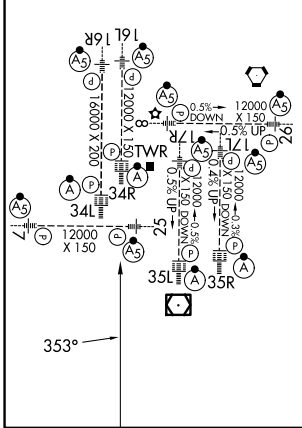
RNP AR APCH - GPS. Authorization required. From MCMUL or KUGLN: RF.	ALSF-2 	MISSED APPROACH: Climb to 10000 on track 353° to PIPSY and on track 315° to NIWOT and hold.
<p>▼ For uncompensated Baro-VNAV systems, procedure NA below -26°C or above 54°C. Simultaneous approach authorized. For inop ALS, increase RNP 0.20 all Cats visibility to 1½ SM and RNP 0.30 all Cats visibility to 1¾ SM.</p>		

D-ATIS 125.6 379.9	DENVER APP CON 119.3 307.3 (N) 120.35 379.3 (S)	DENVER TOWER 135.3 351.95	GND CON 121.35 379.175 (W) 121.85 377.1 (E)
------------------------------	---	-------------------------------------	---

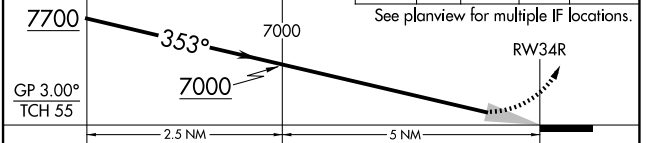


ELEV 5434	D	TDZE 5354
-----------	----------	-----------

HIRL all Rwys
TDZL/RCLS Rwys 7, 16L, 16R, 17R, 26, 34L, 34R, 35L, 35R



VGSi and RNAV glidepath not coincident (VGSi Angle 3.00/TCH 63).			
BSAYN	↑ 10000	PIPSY \star tr 353°	NIWOT \triangle tr 315°



CATEGORY	A	B	C	D
RNP 0.10 DA		5743/35	389 (400-½%)	
RNP 0.20 DA		5850/50	496 (500-1)	
RNP 0.30 DA		5980-1¾	626 (600-1¾)	

AUTHORIZATION REQUIRED

SW-1, 19 MAR 2026 to 16 APR 2026

SW-1, 19 MAR 2026 to 16 APR 2026