

# RNAV (RNP) Z RWY 35R

DENVER INTL (DEN)

APP CRS <b>353°</b>	Rwy Ldg TDZE Apt Elev	<b>12000</b> <b>5370</b> <b>5434</b>
------------------------	-----------------------------	--

RNP AR APCH - GPS. Authorization required. From MSIMS: RF.

▼ For uncompensated Baro-VNAV systems, procedure NA below -26°C or above 54°C. For inop ALS, increase RNP 0.10 all Cats visibility to RVR 4500. Simultaneous approach authorized.

ALSF-2

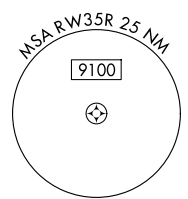
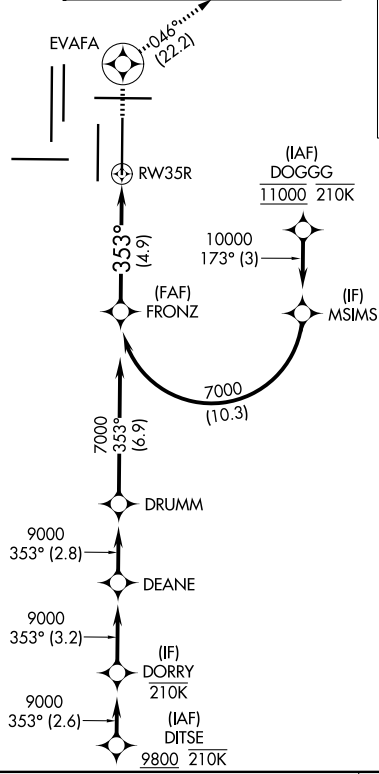
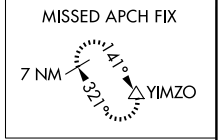
MISSED APPROACH: Climb to 10000 direct EVAFA and on track 046° to YIMZO and hold.

D-ATIS  
**125.6 379.9**

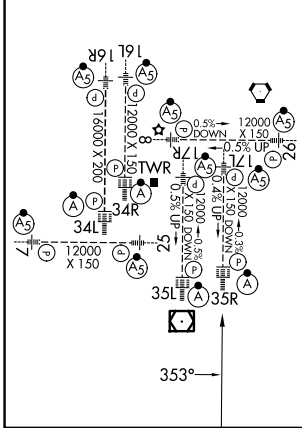
DENVER APP CON  
**119.3 307.3 (N)**  
**120.35 379.3 (S)**

DENVER TOWER  
**132.35 239.275**

GND CON  
**121.35 379.175 (W)**  
**121.85 377.1 (E)**



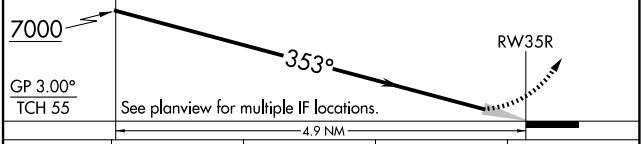
ELEV 5434	<b>D</b>	TDZE 5370
HIRL all Rwys TDZL/RCLS Rwys 7, 16L, 16R, 17R, 26, 34L, 34R, 35L, 35R		



VGSI and RNAV glidepath not coincident (VGSI Angle 3.00/TCH 66).

10000 EVAFA  $\triangle$  YIMZO

FRONZ  $\triangle$  tr 046°



CATEGORY	A	B	C	D
RNP 0.10 DA		5631/24	261 (200-1/2)	
RNP 0.30 DA		5702/26	332 (300-1/2)	

**AUTHORIZATION REQUIRED**

SW-1, 19 MAR 2026 to 16 APR 2026

SW-1, 19 MAR 2026 to 16 APR 2026