

| | | |
|-------------|----------|--------------|
| APP CRS | Rwy Ldg | 12000 |
| 082° | TDZE | 5352 |
| | Apt Elev | 5434 |


RNAV (RNP) Z RWY 7

DENVER INTL (DEN)

RNP AR APCH.

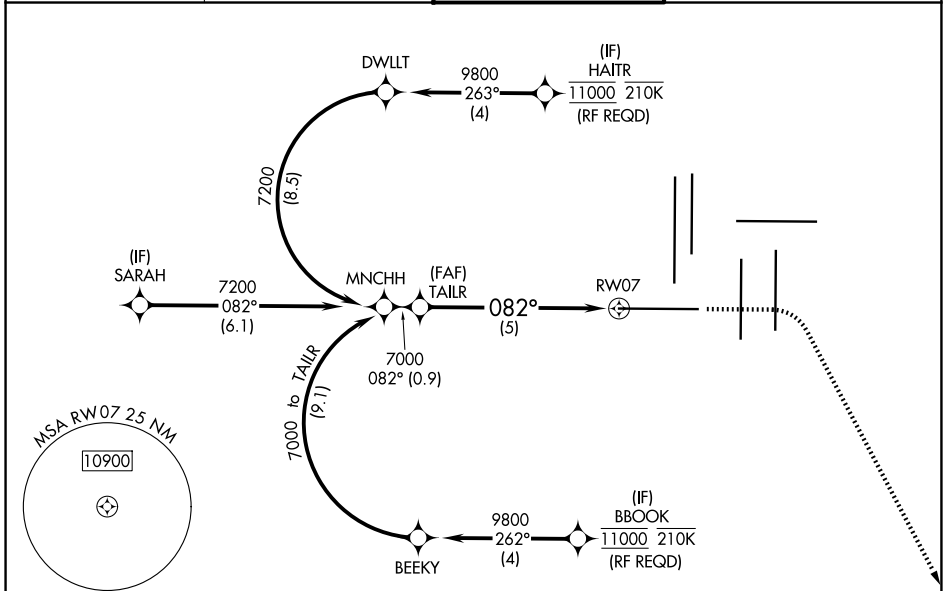
Simultaneous approach authorized. For uncompensated Baro-VNAV systems, procedure NA below -23°C or above 54°C. For inop ALS, increase RNP 0.15 all Cats visibility to RVR 4000, and increase RNP 0.30 all Cats visibility to RVR 6000.

MALSR



MISSED APPROACH: Climb to 5900 then climbing right turn to 10000 direct CIDMU and track 081° to LIMEX and hold.

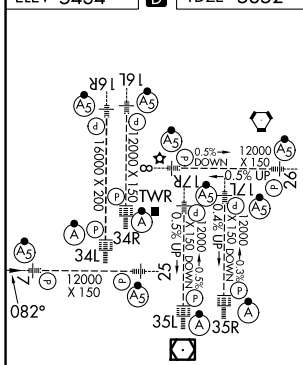
| | | | |
|------------------------------|---|--------------------------------------|---|
| D-ATIS 125.6 379.9 | DENVER APP CON 119.3 307.3 (N) 120.35 379.3 (S) | DENVER TOWER 128.75 273.55 | GND CON 121.35 379.175 (W) 121.85 377.1 (E) |
|------------------------------|---|--------------------------------------|---|



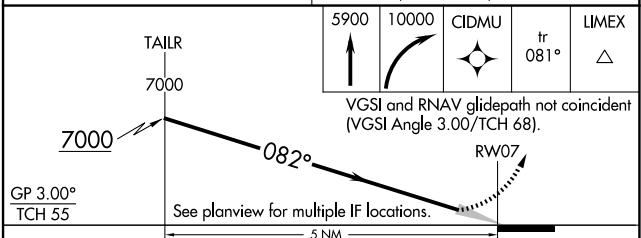
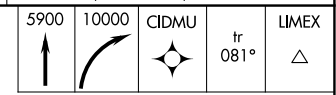
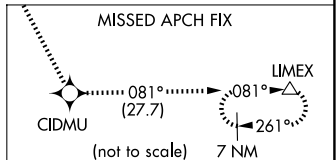
SW-1, 19 MAR 2026 to 16 APR 2026

SW-1, 19 MAR 2026 to 16 APR 2026

| | | |
|-----------|----------|-----------|
| ELEV 5434 | D | TDZE 5352 |
|-----------|----------|-----------|



HIRL all Rwys
TDZL/RCLS Rwys 7, 16L, 16R, 17R, 26, 34L, 34R, 35L, 35R



| CATEGORY | A | B | C | D |
|-------------|---|---------|-------------|---|
| RNP 0.15 DA | | 5602/24 | 250 (200-½) | |
| RNP 0.30 DA | | 5753/40 | 401 (400-¾) | |

AUTHORIZATION REQUIRED