

WAAS CH <b>81830</b> <b>W17A</b>	APP CRS <b>173°</b>	Rwy Ldg TDZE <b>5339</b> Apt Elev <b>5434</b>
--	------------------------	---


# RNAV (GPS) Y RWY 17L

DENVER INTL (DEN)

**RNP APCH - GPS.**

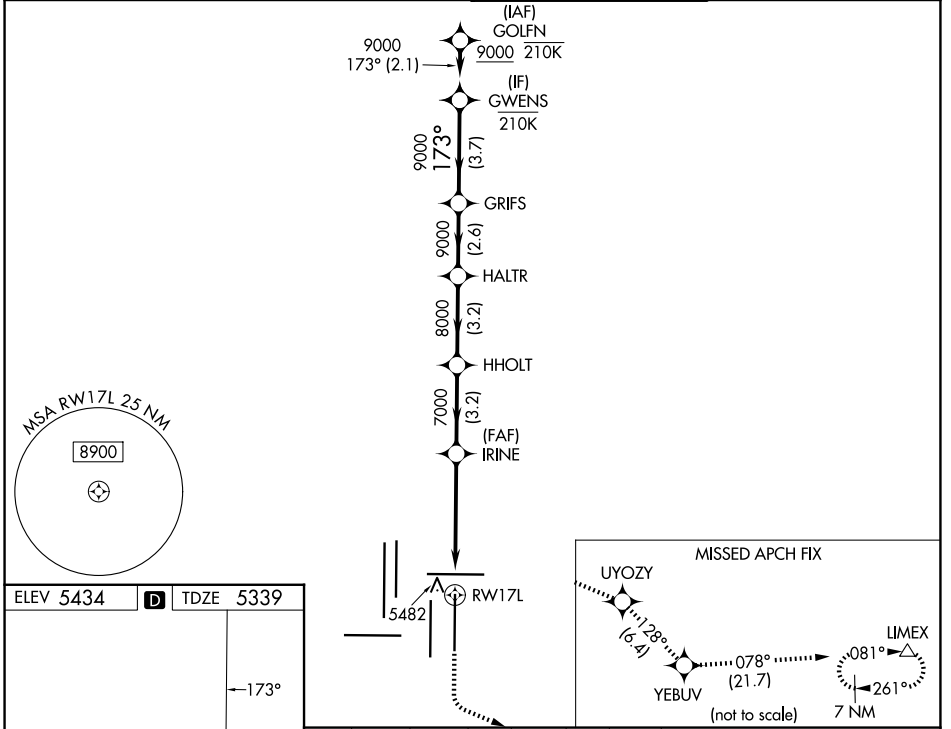
Simultaneous approach authorized. Use of FD or AP required during simultaneous operations. LNAV procedure NA during simultaneous operations.  
For uncompensated Baro-VNAV systems, LNAV/VNAV NA below -26°C or above 54°C. For inop ALS increase LNAV/VNAV all Cats visibility to RVR 4500.  
\*RVR 1800 authorized with use of FD or AP or HUD to DA.

**MALSR**



**MISSED APPROACH:** Climb to 5900, then climbing left turn to 10000 direct UYOZY and track 128° to YEBUV and track 078° to LIMEX and hold.

D-ATIS <b>125.6 379.9</b>	DENVER APP CON <b>119.3 307.3 (N)</b> <b>120.35 379.3 (S)</b>	DENVER TOWER <b>132.35 239.275</b>	GND CON <b>121.35 379.175 (W)</b> <b>121.85 377.1 (E)</b>
------------------------------	---	---------------------------------------	---



ELEV 5434	<b>D</b>	TDZE 5339
-----------	----------	-----------

HIRL all Rwys  
TDZL/RCLS Rwys 7, 16L, 16R, 17R, 26, 34L, 34R, 35L, 35R

5900	10000	UYOZY	tr 128°	YEBUV	tr 078°	LIMEX	VGSI and RNAV glidepath not coincident (VGSI Angle 3.00/TCH 66).
							HALTR GRIFS GWENS
		IRINE		HHOLT			
		1 NM to RW17L		7000		8000	
						9000	9000
							GP 3.00° TCH 55
		1 NM	4.1 NM	3.2 NM	3.2 NM	2.6 NM	3.7 NM
CATEGORY	A	B	C	D			
LPV DA*	5539/24		200 (200-½)				
LNAV/VNAV DA	5648/24		309 (300-½)				
LNAV MDA	5720/24	381 (300-½)	5720/35	381 (300-⅝)			

SW-1, 19 MAR 2026 to 16 APR 2026

SW-1, 19 MAR 2026 to 16 APR 2026