

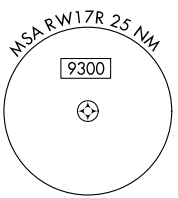
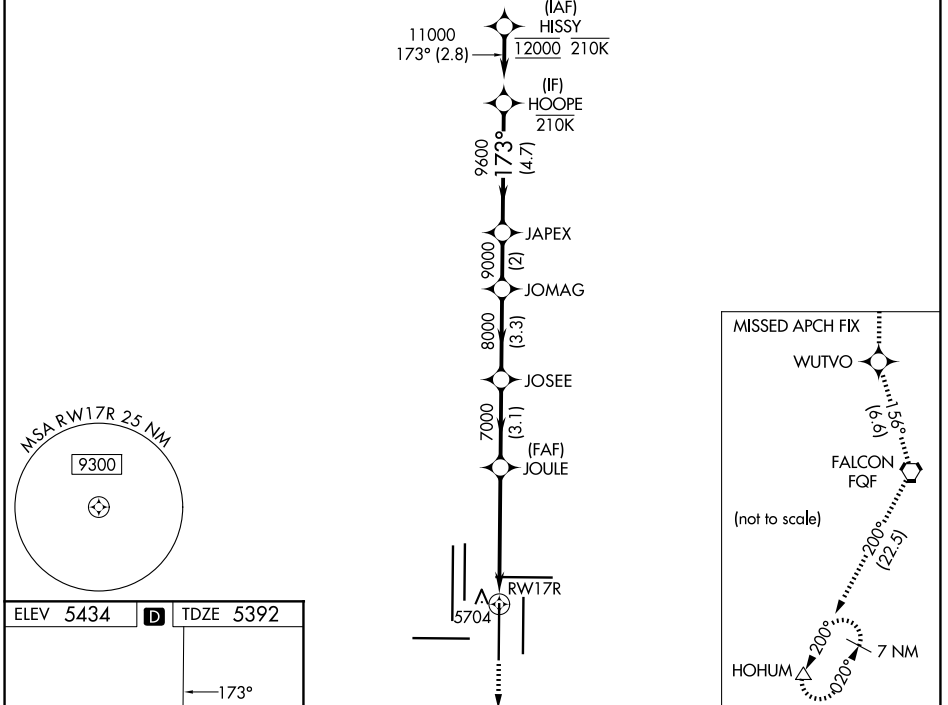
WAAS CH 93529 W17B	APP CRS 173°	Rwy Ldg TDZE 5392 Apt Elev 5434
----------------------------------------	------------------------	-----------------------------------------------------

RNAV (GPS) Y RWY 17R

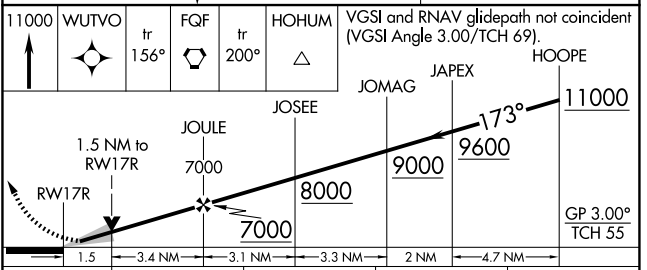
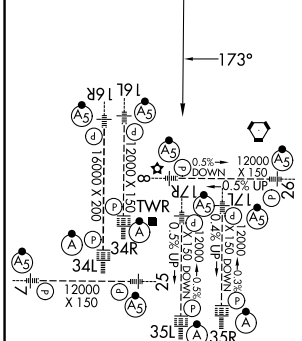
DENVER INTL (DEN)

RNP APCH - GPS.	MALS R	MISSED APPROACH: Climb to 11000 direct WUTVO and track 156° to FQF VORTAC and track 200° to HOHUM and hold.
<p>▼ LNAV procedure NA during simultaneous operations. Use of FD or AP required during simultaneous operations. For uncompensated Baro-VNAV systems, LNAV/VNAV NA below -26°C or above 54°C. Simultaneous approach authorized. For inop ALS, increase LNAV/VNAV all Cats visibility to 1½ SM.</p>		

D-ATIS 125.6 379.9	DENVER APP CON 119.3 307.3 (N) 120.35 379.3 (S)	DENVER TOWER 124.3 322.45	GND CON 121.35 379.175 (W) 121.85 377.1 (E)
------------------------------	---------------------------------------------------------------------	-------------------------------------	-----------------------------------------------------------------



ELEV 5434	D	TDZE 5392
-----------	----------	-----------



CATEGORY	A	B	C	D
LPV DA		5592/18	200 (200-½)	
LNAV/VNAV DA		5857/50	465 (500-1)	
LNAV MDA	5940/24	548 (600-½)	5940/60	548 (600-1¼)

HIRL all Rwys
TDZL/RCLS Rwys 7, 16L, 16R, 17R, 26, 34L, 34R, 35L, 35R

SW-1, 19 MAR 2026 to 16 APR 2026

SW-1, 19 MAR 2026 to 16 APR 2026