


WAAS CH 58128 W26A	APP CRS 263°	Rwy Ldg 12000 TDZE 5309 Apt Elev 5434
----------------------------------------	------------------------	------------------------------------------------------------------

RNAV (GPS) Y RWY 26

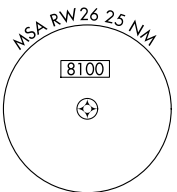
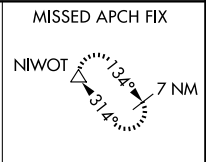
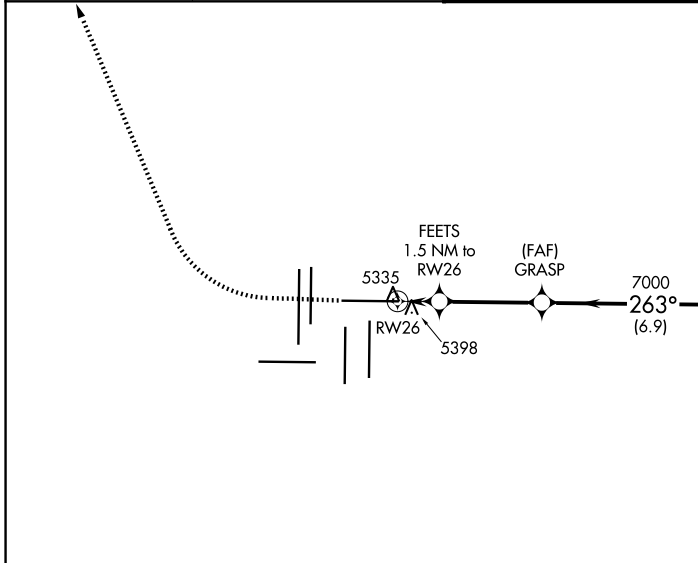
DENVER INTL (DEN)

RNP APCH.
RADAR required.

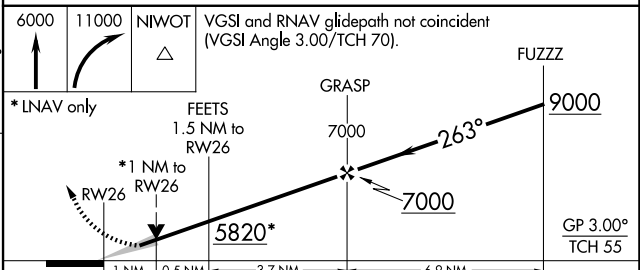
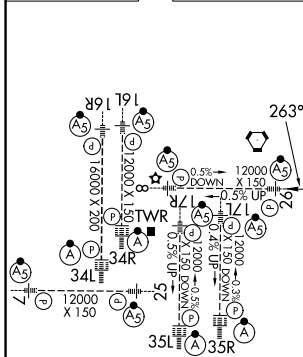
▼ For uncompensated Baro-VNAV systems, LNAV/VNAV NA below -25°C or above 46°C. Simultaneous approach authorized with Rwy 25. For inoperative ALS, increase LNAV/VNAV all Cats visibility to RVR 4000 and LNAV Cat C/D visibility to RVR 5500. LNAV procedure NA during simultaneous operations. Use of FD or AP providing RNAV track guidance required during simultaneous operations.

MALSR  MISSED APPROACH: Climb to 6000 then climbing right turn to 11000 direct NIWOT and hold.

D-ATIS 125.6 379.9	DENVER APP CON 119.3 307.3 (N) 120.35 379.3 (S)	DENVER TOWER 132.35 239.275	GND CON 121.35 379.175 (W) 121.85 377.1 (E)
------------------------------	---------------------------------------------------------------------	---------------------------------------	-----------------------------------------------------------------



ELEV 5434 **D** TDZE 5309



CATEGORY	A	B	C	D
LPV DA		5509/18	200 (100-1/2)	
LNAV/VNAV DA		5559/24	250 (200-1/2)	
LNAV MDA	5660/24	351 (300-1/2)	5660/30	351 (300-5/8)

HIRL all Rwys
TDZL/RCLS Rwys 7, 16L, 16R, 17R, 26, 34L, 34R, 35L, 35R

SW-1, 19 MAR 2026 to 16 APR 2026

SW-1, 19 MAR 2026 to 16 APR 2026