

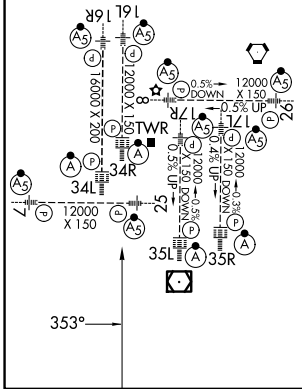
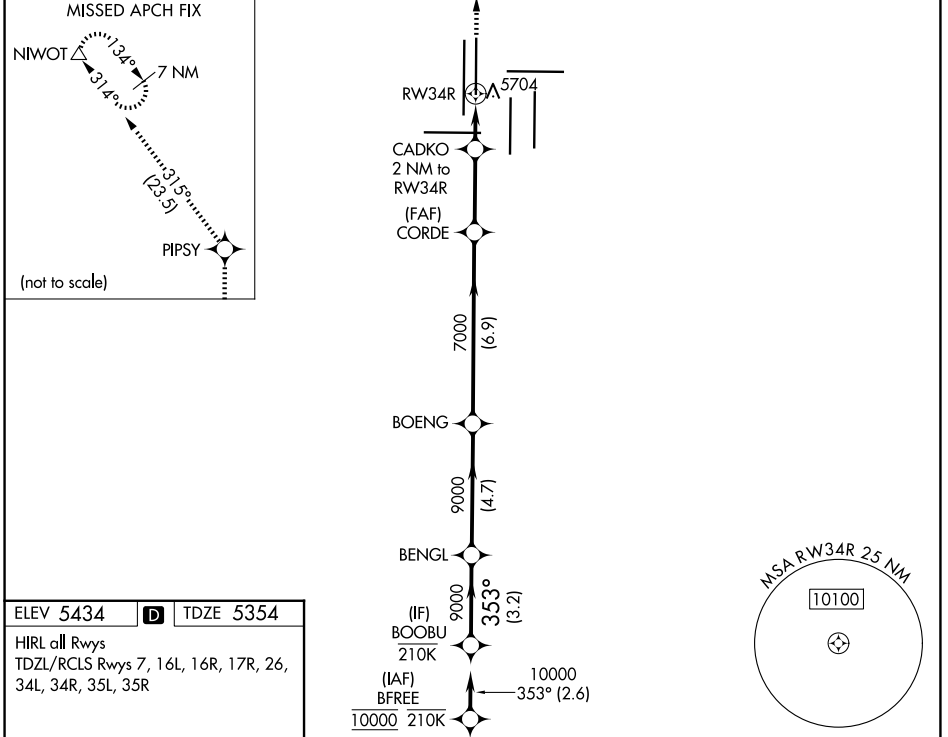
WAAS CH 90318 W34B	APP CRS 353°	Rwy Ldg TDZE Apt Elev	12000 5354 5434
----------------------------------------	------------------------	-----------------------------	--------------------------------------------

RNAV (GPS) Y RWY 34R

DENVER INTL (DEN)

RNP APCH - GPS.	ALSF-2	MISSED APPROACH: Climb to 10000 direct PIPSY and on track 315° to NIWOT and hold.
<p>▼ For uncompensated Baro-VNAV systems, LNAV/VNAV NA below -26°C or above 54°C. Simultaneous approach authorized. Use of FD or AP required during simultaneous operations. LNAV procedure NA during simultaneous operations. For inop ALS, increase LNAV/VNAV all Cats visibility to 1½ SM.</p>		

D-ATIS 125.6 379.9	DENVER APP CON 119.3 307.3 (N) 120.35 379.3 (S)	DENVER TOWER 135.3 351.95	GND CON 121.35 379.175 (W) 121.85 377.1 (E)
------------------------------	---------------------------------------------------------------------	-------------------------------------	-----------------------------------------------------------------



VGSI and RNAV glidepath not coincident (VGSI Angle 3.00/TCH 63).

BOOBU	BENGL	BOENG	10000	PIPSY	tr 315°	NIWOT	
			10000	PIPSY	tr 315°	NIWOT	
GP 3.00°	TCH 55	6040	7000	CORDE	CADKO 2 NM to RWY34R	RWY34R	
			3.2 NM	4.7 NM	6.9 NM	3 NM	2 NM
CATEGORY	A	B	C	D			
LPV DA	5554/18		200 (200-½)				
LNAV/VNAV DA	5842/50		488 (500-1)				
LNAV MDA	5940/24 586 (600-½)		5940-1¼ 586 (600-1¼)				

SW-1, 19 MAR 2026 to 16 APR 2026

SW-1, 19 MAR 2026 to 16 APR 2026