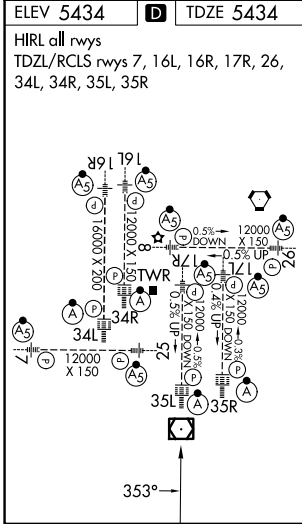
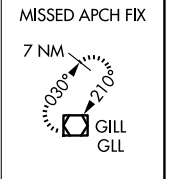
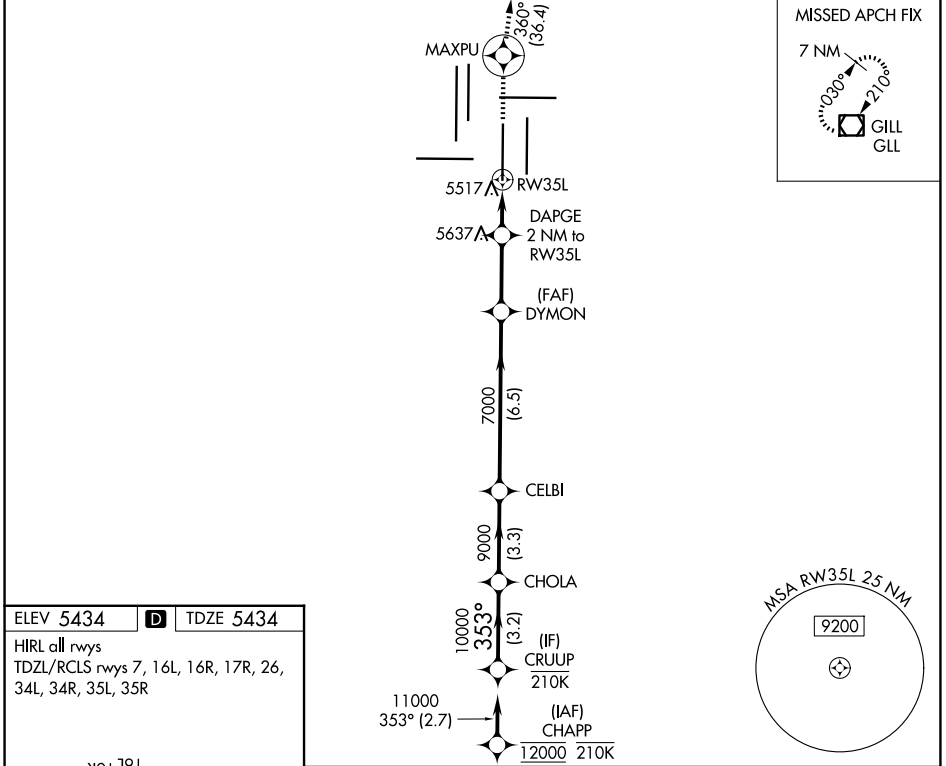


WAAS CH <b>53419</b> <b>W35A</b>	APP CRS <b>353°</b>	Rwy Ldg TDZE <b>5434</b> Apt Elev <b>5434</b>	<b>12000</b> <b>5434</b> <b>5434</b>
--	------------------------	---	--

# RNAV (GPS) Y RWY 35L

DENVER INTL (DEN)

RNP APCH - GPS. ▼ For uncompensated Baro-VNAV systems, LNAV/VNAV NA below -26°C or above 54°C. For inop ALS, increase LNAV/VNAV all Cats visibility to RVR 4000, increase LNAV visibility Cat C and Cat D to RVR 5500. LNAV procedure NA during simultaneous operations. Simultaneous approach authorized. Use of FD or AP required during simultaneous operations.		ALS-F-2 	MISSED APPROACH: Climb to 10000 direct MAXPU and on track 360° to GLL VOR/DME and hold.
D-ATIS <b>125.6 379.9</b>	DENVER APP CON <b>119.3 307.3 (N)</b> <b>120.35 379.3 (S)</b>	DENVER TOWER <b>124.3 322.45</b>	GND CON <b>121.35 379.175 (W)</b> <b>121.85 377.1 (E)</b>



VGSI and RNAV glidepath not coincident (VGSI Angle 3.00/TCH 71).

CRUUP	CHOLA	CELBI	DYMON	10000	MAXPU	tr 360°	GLL
11000	9000	7000	6120	DAPGE 2 NM to RW35L 0.9 NM to RW35L			
GP 3.00° TCH 53							
CATEGORY	A	B	C	D			
LPV DA		5634/18	200 (200-½)				
LNAV/VNAV DA		5684/24	250 (300-½)				
LNAV MDA	5780/24	346 (400-½)		5780/30	346 (400-⅝)		

SW-1, 19 MAR 2026 to 16 APR 2026

SW-1, 19 MAR 2026 to 16 APR 2026