

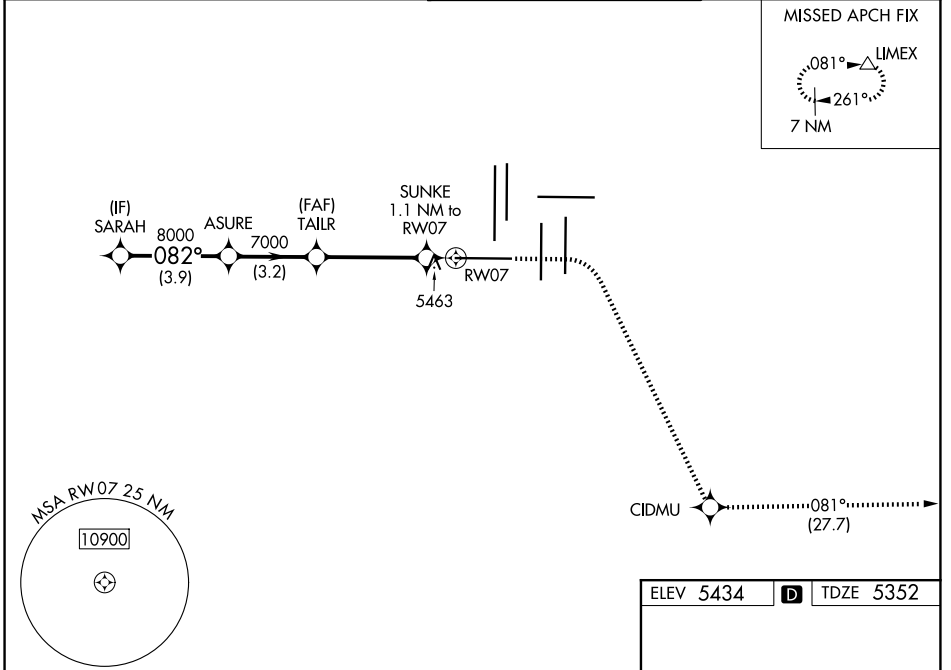
WAAS CH <b>87128</b> <b>W07A</b>	APP CRS <b>082°</b>	Rwy Ldg <b>12000</b> TDZE <b>5352</b> Apt Elev <b>5434</b>
--	------------------------	--

# RNAV (GPS) Y RWY 7

DENVER INTL (DEN)

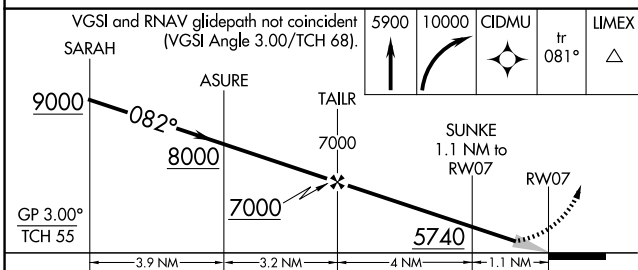
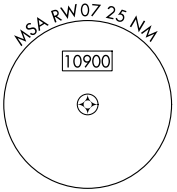
RNP APCH - GPS.	MALSR	MISSED APPROACH: Climb to 5900 then climbing right turn to 10000 direct CIDMU and on track 081° to LIMEX and hold.
<p>Simultaneous approach authorized. For uncompensated Baro-VNAV systems, LNAV/VNAV NA below -22°C or above 54°C. LNAV procedure NA during simultaneous operations. For inop ALS, increase LNAV/VNAV all Cats visibility to RVR 4500, and LNAV Cat C/D visibility to RVR 5500. Use of FD or AP required during simultaneous operations.</p>		

D-ATIS <b>125.6 379.9</b>	DENVER APP CON <b>119.3 307.3 (N)</b> <b>120.35 379.3 (S)</b>	DENVER TOWER <b>128.75 273.55</b>	GND CON <b>121.35 379.175 (W)</b> <b>121.85 377.1 (E)</b>
------------------------------	---	--------------------------------------	---



SW-1, 19 MAR 2026 to 16 APR 2026

SW-1, 19 MAR 2026 to 16 APR 2026



CATEGORY	A	B	C	D
LPV DA	5552/18		200 (200-½)	
LNAV/VNAV DA	5626/24		274 (200-½)	
LNAV MDA	5720/24	368 (300-½)	5720/35	368 (300-¾)

ELEV 5434 **D** TDZE 5352

HIRL all Rwws  
TDZL/RCLS Rwws 7, 16L, 16R, 17R, 26, 34L, 34R, 35L, 35R