

WAAS CH 82228 W08A	APP CRS 082°	Rwy Ldg 12000 TDZE 5354 Apt Elev 5434
--	------------------------	--

RNAV (GPS) Y RWY 8

DENVER INTL (DEN)

▼ For uncompensated Baro-VNAV systems, LNAV/VNAV NA below -25°C (-13°F) or above 47°C (117°F). Simultaneous approach authorized with Rwy 7. DME/DME RNP-0.3 NA. LNAV procedure NA during simultaneous operations. Use of FD or AP providing RNAV track guidance required during simultaneous operations. For inoperative MALSR, increase LNAV Cat C/D visibility to RVR 5500. # RVR 1800 authorized with use of FD or AP or HUD to DA.

MALSR



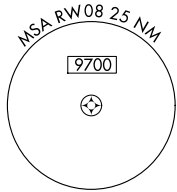
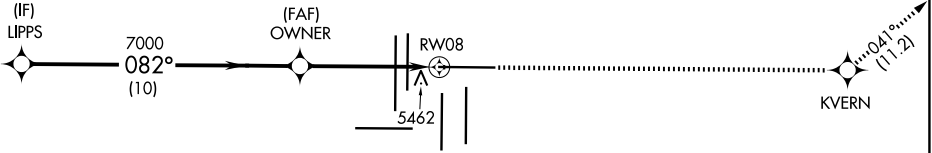
MISSED APPROACH: Climb to 10000 direct KVERN and on track 041° to WITNE and hold.

D-ATIS 125.6 379.9	DENVER APP CON 119.3 307.3 (N) 120.35 379.3 (S)	DENVER TOWER 132.35 239.275	GND CON 121.35 379.175 (W) 121.85 377.1 (E)
------------------------------	---	---------------------------------------	---

MISSED APCH FIX



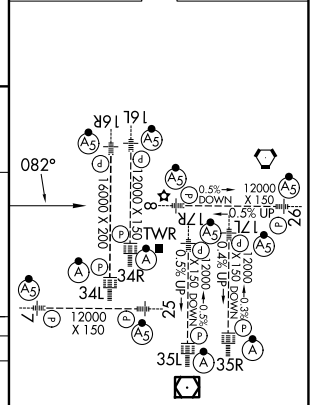
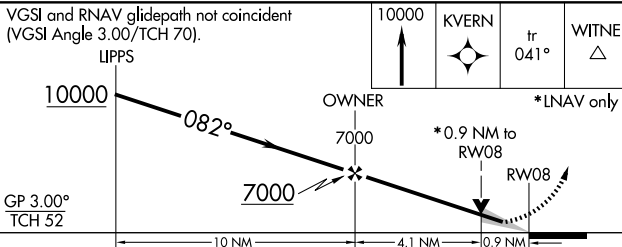
SW-1, 19 MAR 2026 to 16 APR 2026



RADAR REQUIRED

ELEV 5434	D TDZE 5354
-----------	--------------------

VGSI and RNAV glidepath not coincident (VGSI Angle 3.00/TCH 70).



CATEGORY	A	B	C	D
LPV DA #	5554/24		200 (200-½)	
LNAV/VNAV DA	5833/60		479 (400-1¼)	
LNAV MDA	5720/24	366 (300-½)	5720/35	366 (300-⅝)

HIRL all Rwy's
TDZL/RCLS Rwy's 7, 16L, 16R, 17R, 26, 34L, 34R, 35L, 35R

SW-1, 19 MAR 2026 to 16 APR 2026