

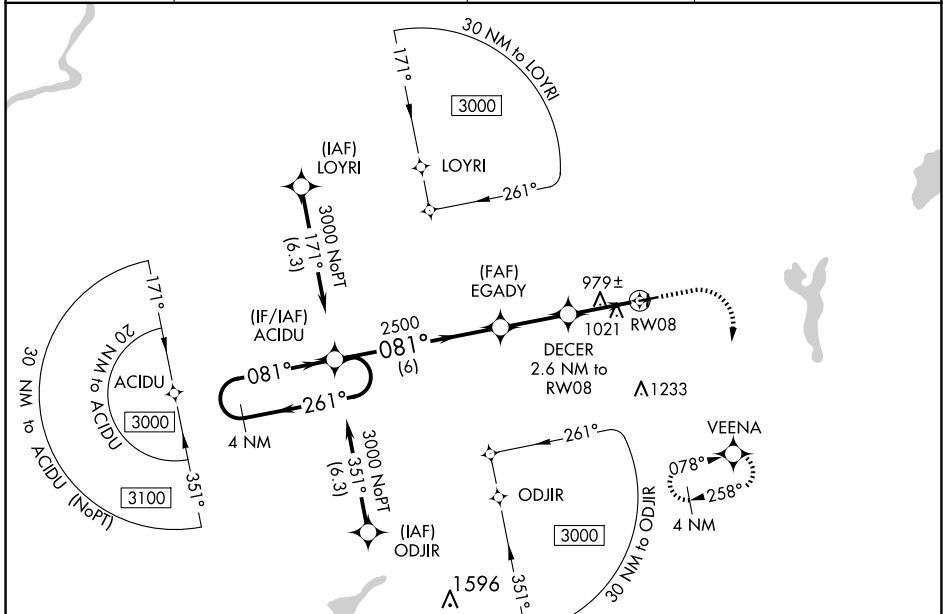
WAAS CH 78423 W08A	APP CRS 081°	Rwy Idg TDZE Apt Elev	3900 851 860
--	------------------------	-----------------------------	---

RNAV (GPS) RWY 8

EAST TROY MUNI (57C)

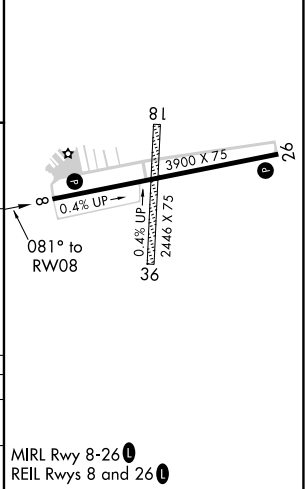
RNP APCH. ▼ Obtain local altimeter setting on CTAF; when not received use General Mitchell Intl altimeter setting and increase all MDA 80 feet. Rwy 8 helicopter visibility reduction below 3/4 SM NA. VDP NA when using General Mitchell Intl altimeter setting.	MISSED APPROACH: Climb to 2400 then climbing right turn to 3000 direct VEENA and hold.
--	--

AWOS-3PT 118.125	MILWAUKEE APP CON 125.35 307.0	GCO 121.725	UNICOM 123.0 (CTAF) 0
----------------------------	--	-----------------------	--



ELEV 860	TDZE 851
----------	----------

	ACIDU	EGADY	DECER	VEENA
4 NM Holding Pattern	3000	2500	1700	3000
	← 261°	← 081°	← 081°	← 081°
	→ 081°	→ 261°	→ 261°	→ 261°
	6 NM	2.5 NM	1.5 NM	1.1 NM
CATEGORY	A	B	C	D
LP MDA	1240-1	389 (400-1)	NA	NA
LNAV MDA	1280-1	429 (500-1)	NA	NA



MIRL Rwy 8-26 **0**
REIL Rws 8 and 26 **0**

EC-3, 19 MAR 2026 to 16 APR 2026

EC-3, 19 MAR 2026 to 16 APR 2026