

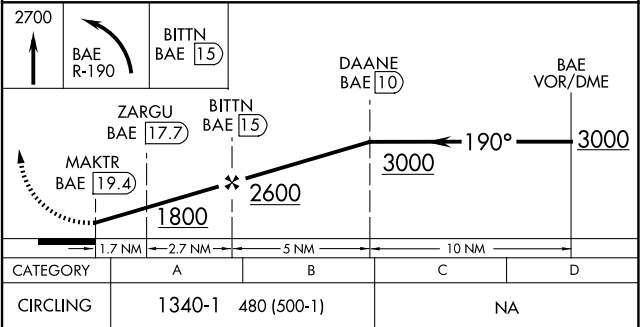
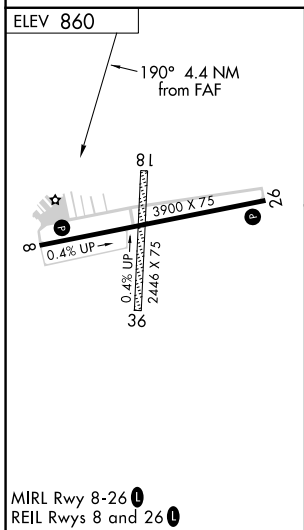
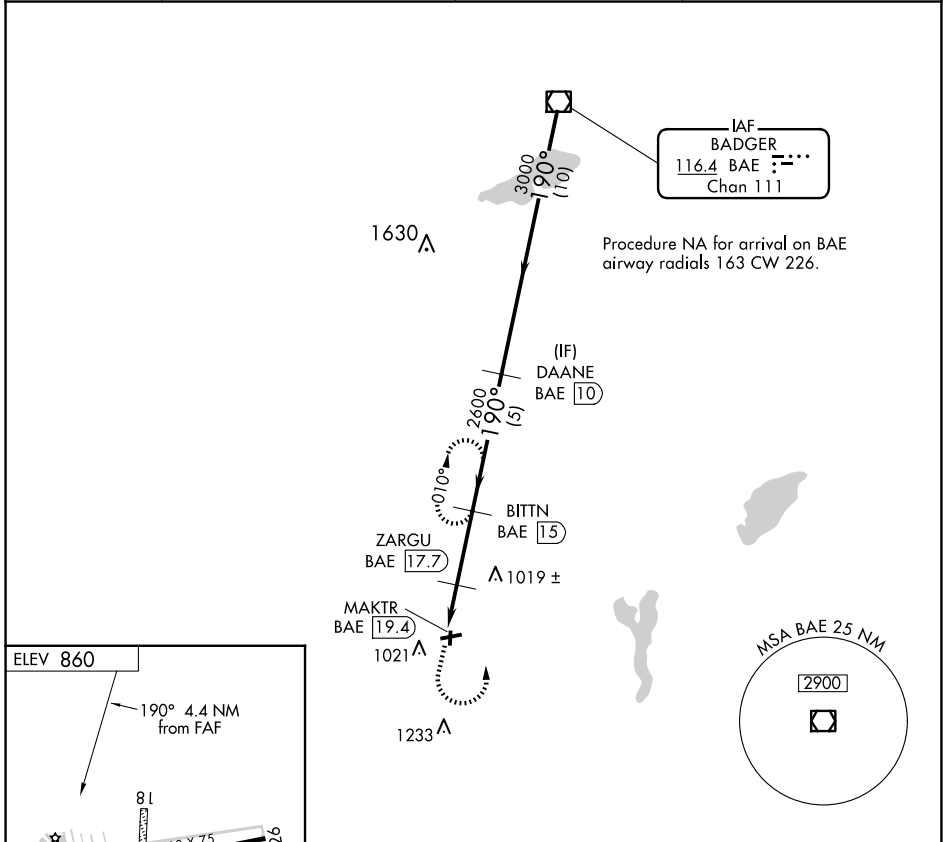
VOR/DME BAE <b>116.4</b> Chan <b>111</b>	APP CRS <b>190°</b>	Rwy Idg TDZE Apt Elev	<b>N/A</b> <b>N/A</b> <b>860</b>
--	------------------------	-----------------------------	--

# VOR/DME-A

EAST TROY MUNI (57C)

<p><b>▼</b> Circling NA to Rws 18 and 36.</p>	<p>MISSED APPROACH: Climb to 2700 then left turn on BAE VOR/DME R-190 to BITTN/15 DME and hold.</p>
---	---

AWOS-3PT <b>118.125</b>	MILWAUKEE APP CON <b>125.35 307.0</b>	GCO <b>121.725</b>	UNICOM <b>123.0</b> (CTAF) <b>0</b>
----------------------------	--	-----------------------	--



EC-3, 19 MAR 2026 to 16 APR 2026

EC-3, 19 MAR 2026 to 16 APR 2026