

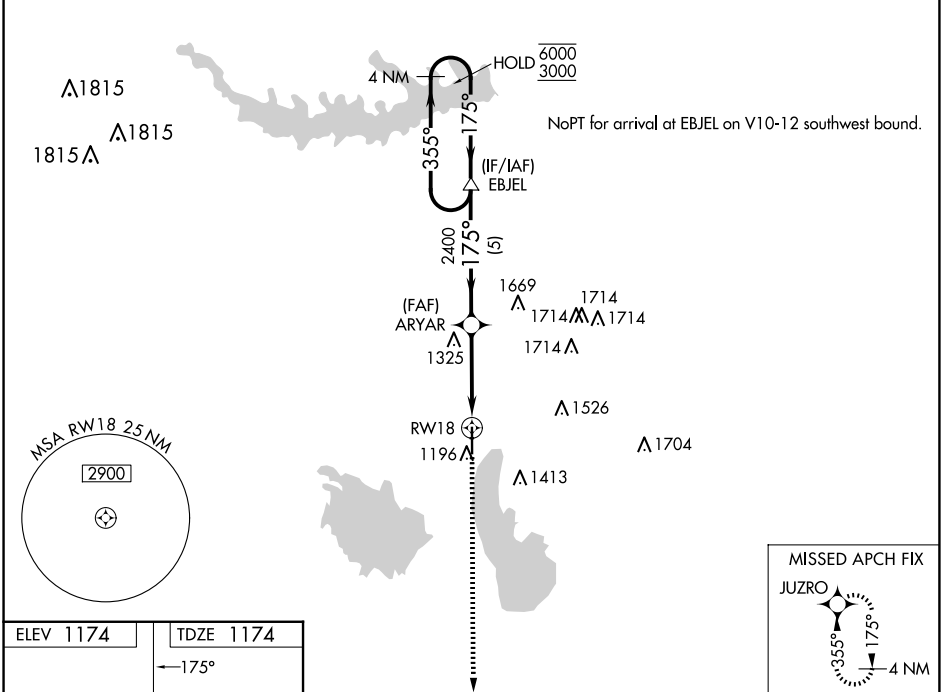
WAAS CH <b>66021</b> <b>W18A</b>	APP CRS <b>175°</b>	Rwy Ldg TDZE Apt Elev	<b>5500</b> <b>1174</b> <b>1174</b>
--	------------------------	-----------------------------	---

# RNAV (GPS) RWY 18

COFFEY COUNTY (UKL)

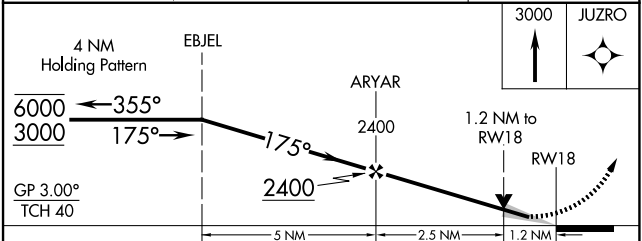
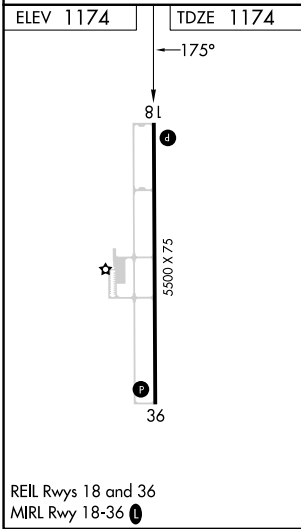
RNP APCH-GPS.		MISSED APPROACH: Climb to 3000 direct JUZRO and hold.
<p><b>⚠</b> For uncompensated Baro-VNAV systems, LNAV/VNAV NA below -17°C or above 54°C.</p>		

AWOS-3PT <b>121.125</b>	KANSAS CITY CENTER <b>127.725 270.25</b>	UNICOM <b>123.0 (CTAF) 0</b>
----------------------------	---	---------------------------------



NC-2, 19 MAR 2026 to 16 APR 2026

NC-2, 19 MAR 2026 to 16 APR 2026



CATEGORY	A	B	C	D
LPV DA	1424-1	250 (300-1)		NA
LNAV/VNAV DA	1424-1	250 (300-1)		NA
LNAV MDA	1580-1	406 (500-1)	1580-1 1/8 406 (500-1 1/8)	NA
<b>C</b> CIRCLING	1580-1 406 (500-1)	1640-1 466 (500-1)	1920-2 1/4 746 (800-2 1/4)	NA