

APP CRS	Rwy Ldg	N/A
091°	TDZE	N/A
	Apt Elev	1518

RNAV (GPS)-C

RANGELEY LAKE (M57)

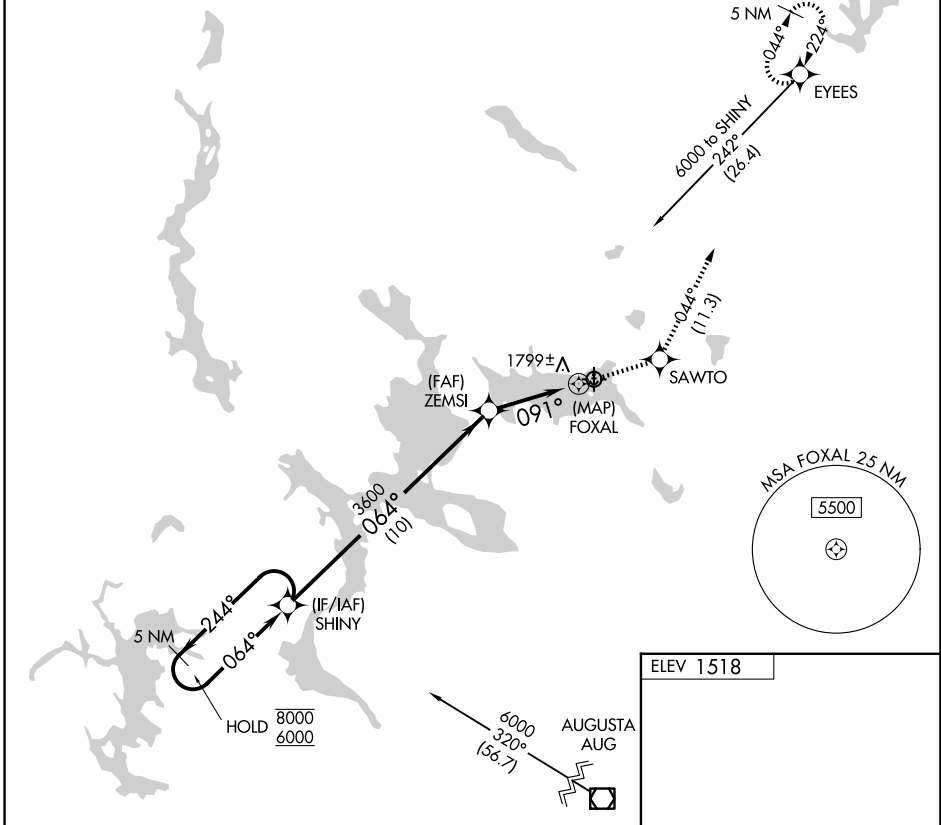
RNP APCH.

Procedure NA at night.
 Obtain local altimeter on CTAF; when not received, use Berlin altimeter setting.

MISSED APPROACH: Climb to 6000 direct SAWTO and on track 044° to EYEEES and hold, continue climb-in-hold to 6000.

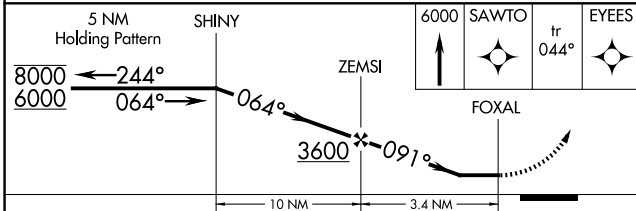
BOSTON CENTER
 124.25 290.5

CTAF
 122.9



ELEV 1518

SEE
 RANGELEY LAKE
 LANDING CHART



CATEGORY	A	B	C	D
CIRCLING	2400-1¼ 882 (900-1¼)	2620-1½ 1102 (1200-1½)		NA
BERLIN ALTIMETER SETTING MINIMUMS				
CIRCLING	2540-1¼ 1022 (1100-1¼)	2760-1½ 1242 (1300-1½)		NA

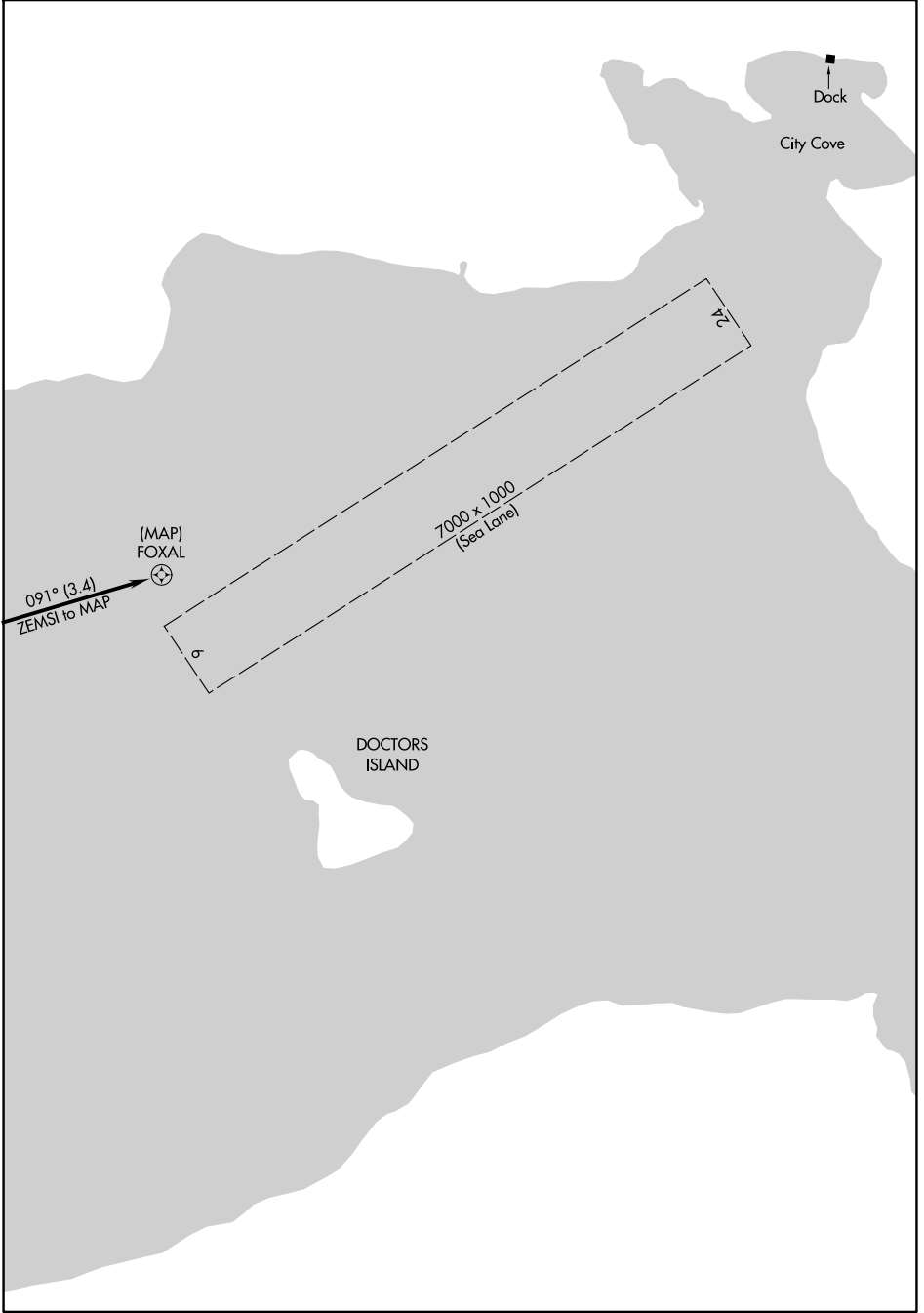
RNAV (GPS)-C LANDING

AL-9122 (FAA)

RANGELEY LAKE (M57)
RANGELEY, MAINE

NE-1, 19 MAR 2026 to 16 APR 2026

NE-1, 19 MAR 2026 to 16 APR 2026



RNAV (GPS)-C LANDING

44°57'N-70°40'W

RANGELEY, MAINE
RANGELEY LAKE (M57)