

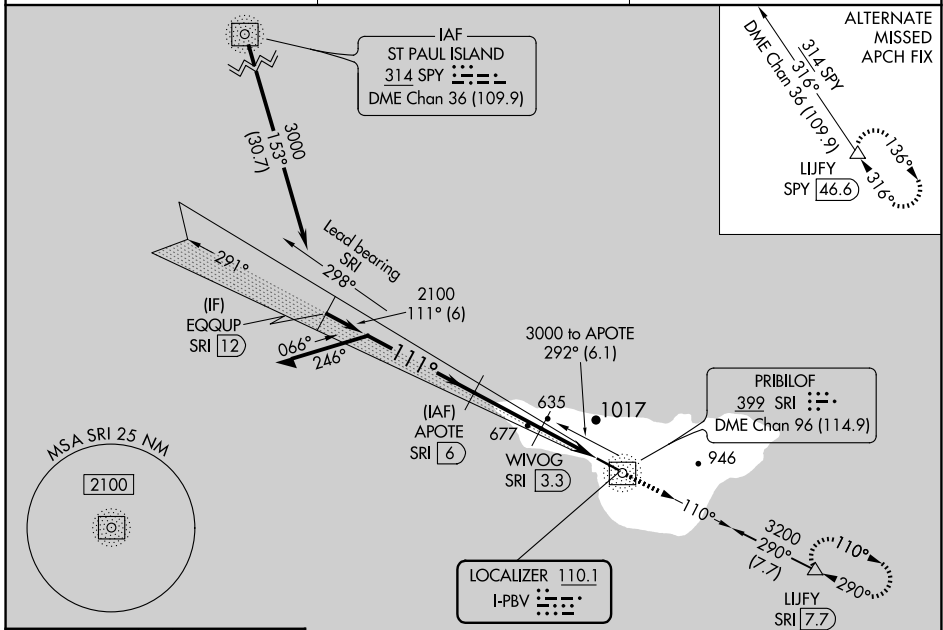
LOC I-PBV <b>110.1</b>	APP CRS <b>111°</b>	Rwy Idg <b>4982</b>
		TDZE <b>128</b>
		Apt Elev <b>128</b>

# ILS or LOC RWY 11

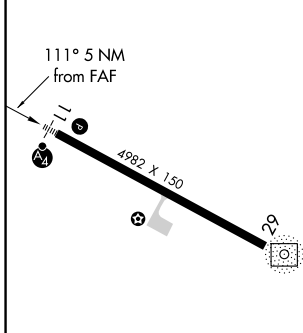
ST GEORGE (PBV) (PAPB)

<p><b>⚠</b> DME from SRI NDB/DME. Simultaneous reception of I-PBV and SRI DME required. Circling NA north of Rwy 11-29. ADF and DME required. Inop table does not apply to S-LOC 11 Cats A and B and S-ILS 11 all Cats.</p>	<p><b>MALSF</b></p>	<p><b>MISSED APPROACH:</b> Climb to 3200 on SRI NDB/DME bearing 110° to LIJFY/SRI 7.7 DME and hold, continue climb-in-hold to 3200.</p>
---	---------------------	---

ASOS <b>135.45</b>	ANCHORAGE CENTER <b>119.1 339.8</b>	CTAF <b>122.8</b>
-----------------------	--	----------------------



ELEV 128	TDZE 128
----------	----------



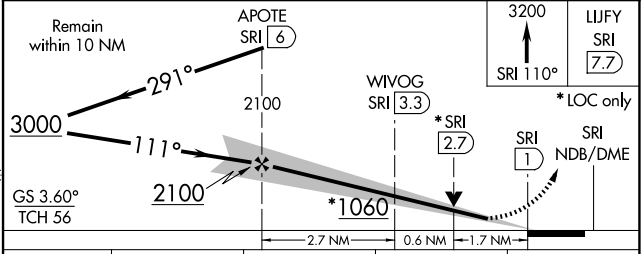
REIL Rwy 29

HIRL Rwy 11-29

FAF to MAP 5 NM

Knots	60	90	120	150	180
Min:Sec	5:00	3:20	2:30	2:00	1:40

## ADF and DME REQUIRED



CATEGORY	A	B	C	D
S-ILS 11	428-1 300 (300-1)			NA
S-LOC 11	840-1	712 (800-1)	840-1¾ 712 (800-1¾)	NA
<input checked="" type="checkbox"/> CIRCLING	840-1 712 (800-1)	980-1¼ 852 (900-1¼)	980-2½ 852 (900-2½)	NA

AK, 19 MAR 2026 to 14 MAY 2026

AK, 19 MAR 2026 to 14 MAY 2026