

WAAS CH 42741 W 11A	APP CRS 111°	Rwy Idg 4982 TDZE 128 Apt Elev 128
---	------------------------	---

RNAV (GPS) RWY 11

ST GEORGE (PBV) (PAPB)

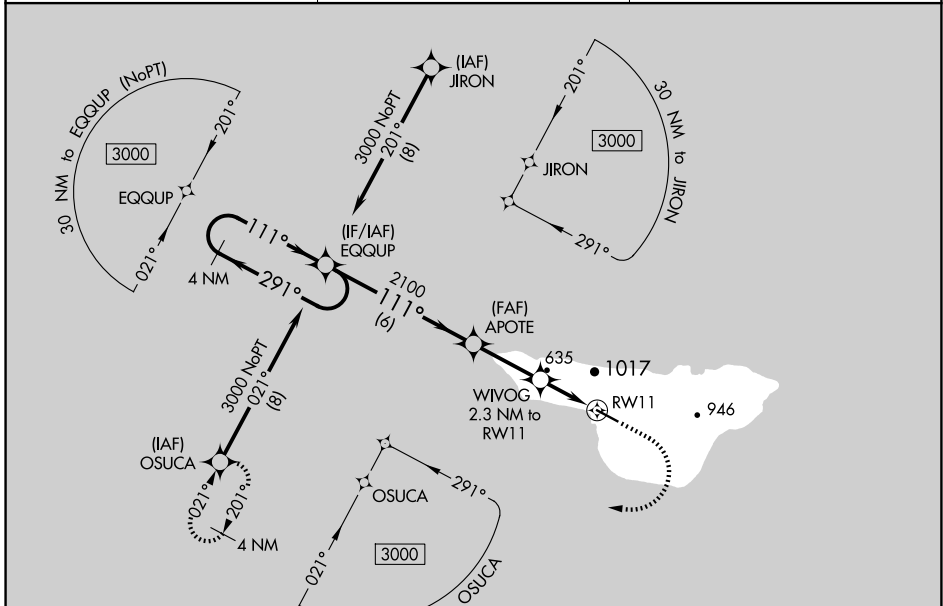
⚠ For uncompensated Baro-VNAV systems, LNAV/VNAV NA below -14°C (7°F) or above 47°C (117°F). DME/DME RNP-0.3 NA. Circling NA north of Rwy 11-29. Inop table does not apply to LPV all Cats and LNAV Cat A. For inop ALS, increase LNAV/VNAV all Cats visibility to 2½ SM. For inop ALS, increase LNAV Cat C visibility to 2½ SM.

MALSF



MISSED APPROACH: Climb to 600 then climbing right turn to 3000 direct OSUCA and hold.

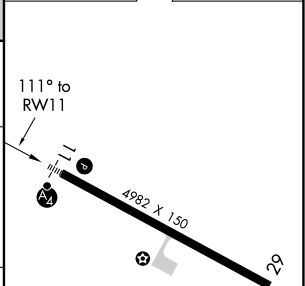
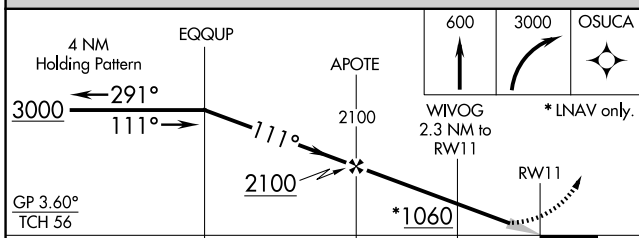
ASOS 135.45	ANCHORAGE CENTER 119.1 339.8	CTAF 122.8
-----------------------	--	----------------------



AK, 19 MAR 2026 to 14 MAY 2026

AK, 19 MAR 2026 to 14 MAY 2026

ELEV 128	TDZE 128
----------	----------



CATEGORY	A	B	C	D
LPV DA	428-1	300 (300-1)		NA
LNAV/VNAV DA	957-2	829 (900-2)		NA
LNAV MDA	900-1	772 (800-1)	900-2 772 (800-2)	NA
C CIRCLING	900-1 772 (800-1)	980-1¼ 852 (900-1¼)	980-2½ 852 (900-2½)	NA

REIL Rwy 29 **⦿**
HIRL Rwy 11-29 **⦿**