

LOC/DME I-LHZ <b>109.35</b> Chan <b>30(Y)</b>	APP CRS <b>046°</b>	Rwy Ldg TDZE Apt Elev	<b>5498</b> <b>368</b> <b>368</b>
---	------------------------	-----------------------------	---

# ILS or LOC RWY 5

TRIANGLE NORTH EXEC (LHZ)

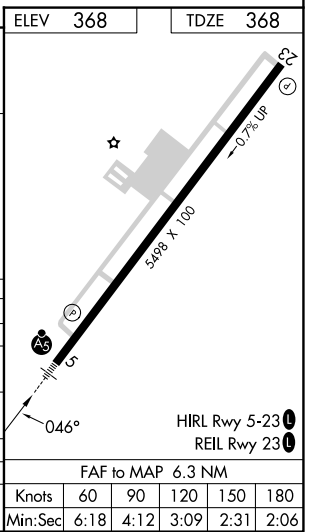
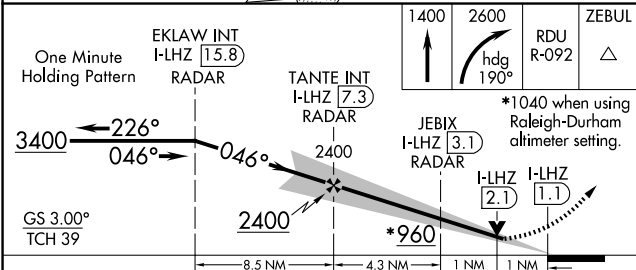
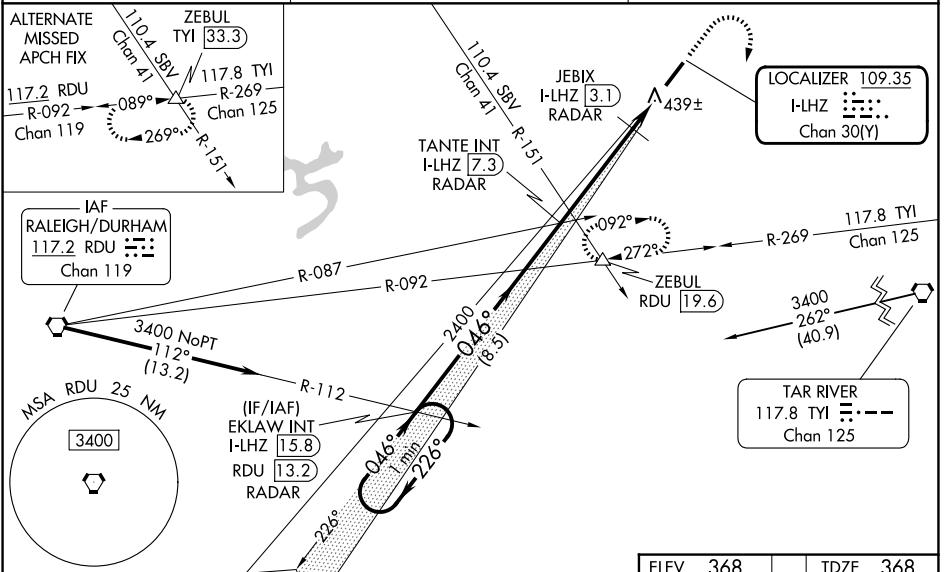
DME or RADAR required.

**NA** VDP NA when using Raleigh-Durham altimeter setting. When local altimeter setting not received, use Raleigh-Durham altimeter setting and increase ILS DA to 633 feet and all MDAs 80 feet; increase S-LOC and Circling visibility Cats C/D 1/4 SM and JEBIX Fix Minimums: Circling visibility Cat C/D 1/4 SM. Autopilot coupled approach NA below 600 feet MSL.

**MALSR**

MISSED APPROACH: Climb to 1400 then climbing right turn to 2600 on heading 190° and on RDU VORTAC R-092 to ZEBUL INT/RDU 19.6 DME and hold.

AWOS-3 <b>118.325</b>	RALEIGH APP CON <b>125.3 353.675</b>	UNICOM <b>123.0 (CTAF)</b>
--------------------------	---	-------------------------------



CATEGORY	A	B	C	D
S-ILS 5		568-1/2	200 (200-1/2)	
S-LOC 5	960-1/2	592 (600-1/2)	960-1 1/4	592 (600-1 1/4)
CIRCLING	960-1	592 (600-1)	980-1 3/4 612 (700-1 3/4)	1000-2 632 (700-2)
JEBIX FIX MINIMUMS				
S-LOC 5	700-1/2	332 (400-1/2)	700-3/4	332 (400-3/4)
CIRCLING	800-1 432 (500-1)	840-1 472 (500-1)	980-1 3/4 612 (700-1 3/4)	1000-2 632 (700-2)

FAF to MAP 6.3 NM	
Knots	60 90 120 150 180
Min:Sec	6:18 4:12 3:09 2:31 2:06

SE-2, 19 MAR 2026 to 16 APR 2026

SE-2, 19 MAR 2026 to 16 APR 2026