

WAAS CH 97547 W27A	APP CRS 276°	Rwy Ldg TDZE Apt Elev	4299 668 670
--	------------------------	-----------------------------	---

RNAV (GPS) RWY 27

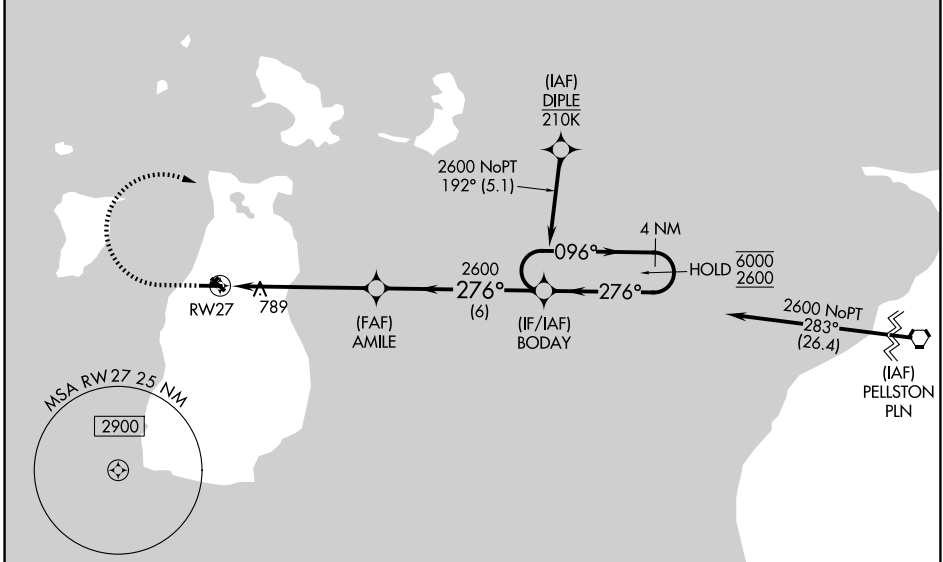
BEAVER ISLAND (SJJ)

RNP APCH - GPS.

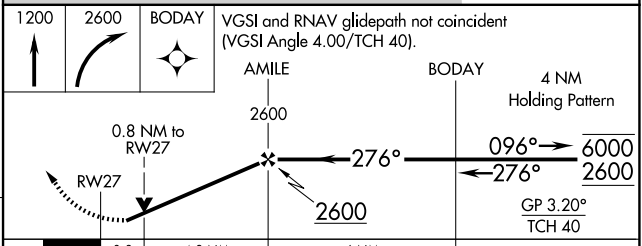
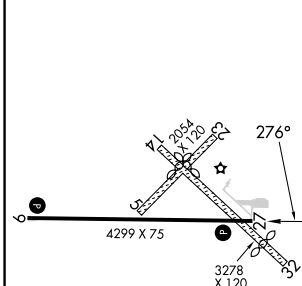
⚠ Circling NA to Rwy 5, 14, 23 and 32. Baro-VNAV and VDP NA when using PLN altimeter setting.
 ⚠ Rwy 27 helicopter visibility reduction below $\frac{3}{4}$ SM NA. For uncompensated Baro-VNAV systems, LNAV/VNAV NA below -16°C or above 54°C. When local altimeter setting not received, use PLN altimeter setting: increase LPV DA to 1077 feet and all visibilities $\frac{1}{8}$ SM; increase LNAV/VNAV DA to 1124 feet and all visibilities $\frac{3}{8}$ SM; increase all MDAs 100 feet and LNAV visibility Cat C $\frac{3}{8}$ SM, and Circling visibility Cat C $\frac{1}{4}$ SM.

MISSED APPROACH: Climb to 1200 then climbing right turn to 2600 direct BODAY and hold.

AWOS-3P 118.075	MINNEAPOLIS CENTER 134.6 354.05	UNICOM 122.8 (CTAF) 0
---------------------------	---	---------------------------------



ELEV 670	TDZE 668
----------	----------



CATEGORY	A	B	C	D
LPV DA		993-1	325 (400-1)	NA
LNAV/VNAV DA		1040-1	372 (400-1)	NA
LNAV MDA		1040-1	372 (400-1)	NA
CIRCLING	1100-1 430 (500-1)	1120-1 450 (500-1)	1180-1½ 510 (600-1½)	NA

MIRL Rwy 9-27 0
 REIL Rwy 9 and 27 0

EC-1, 19 MAR 2026 to 16 APR 2026

EC-1, 19 MAR 2026 to 16 APR 2026