

APP CRS	Rwy Ldg	4000
173°	TDZE	915
	Apt Elev	915

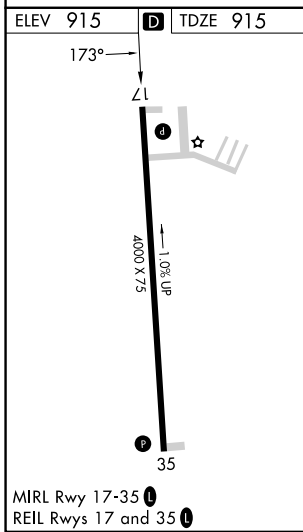
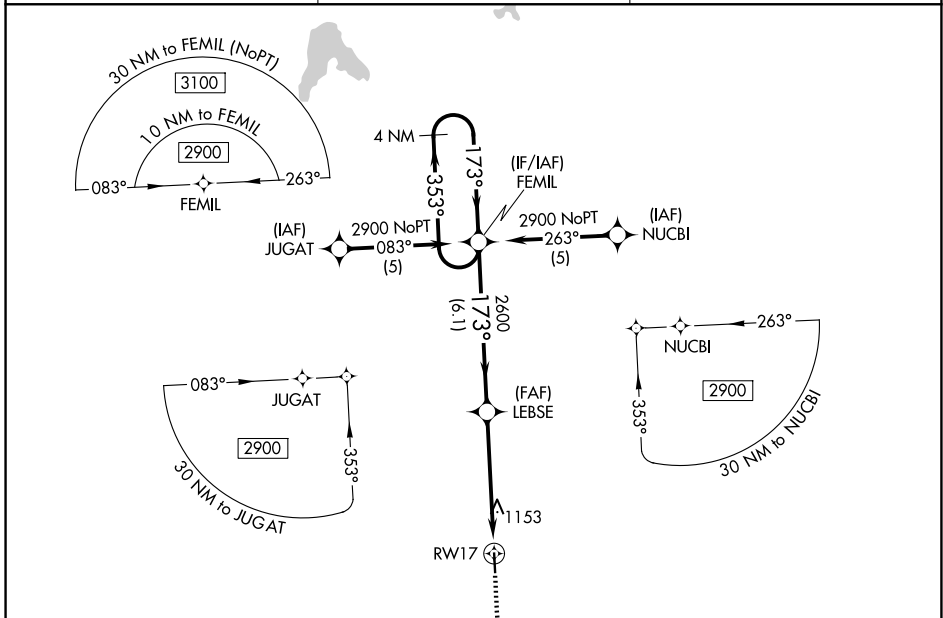
RNAV (GPS) RWY 17

LAWRENCE SMITH MEML (L.R.Y)

RNP APCH.
 ⚠ When local altimeter setting not received, use Kansas City Downtown/Wheeler Fld altimeter setting: increase all MDAs 100 feet and visibility Cat C ¼ mile. Procedure NA at night. Rwy 17 helicopter visibility reduction below 1 SM NA.

MISSED APPROACH: Climb to 2600 direct HOWIF and hold.

AWOS-3PT 119.975	KANSAS CITY CENTER 125.55 327.0	UNICOM 122.9 (CTAF) 0
----------------------------	---	---------------------------------



MIRL Rwy 17-35		REIL Rws 17 and 35	
<p>4 NM Holding Pattern</p> <p>2900 ← 353° → 173° → 2600</p> <p>6.1 NM</p>		<p>VGSI and descent angles not coincident (VGSI Angle 4.00/TCH 53).</p> <p>3.04° TCH 40</p> <p>5.1 NM</p>	
CATEGORY	A	B	C
LNAV MDA	1420-1	505 (600-1)	1420-1½ 505 (600-1½)
CIRCLING	1420-1 505 (600-1)	1460-1 545 (600-1)	1520-1¾ 605 (700-1¾)
			D
			NA
			NA

NC-3, 19 MAR 2026 to 16 APR 2026

NC-3, 19 MAR 2026 to 16 APR 2026