

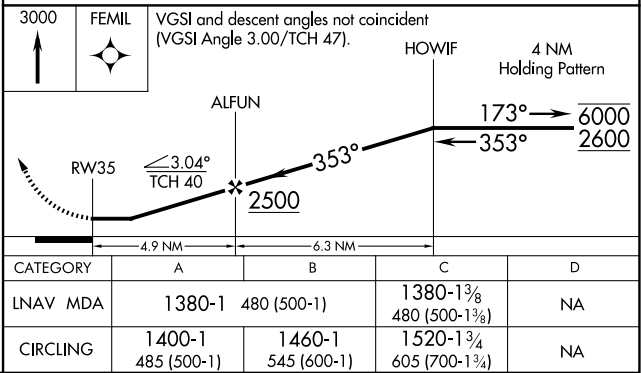
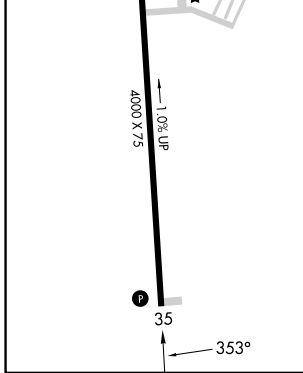
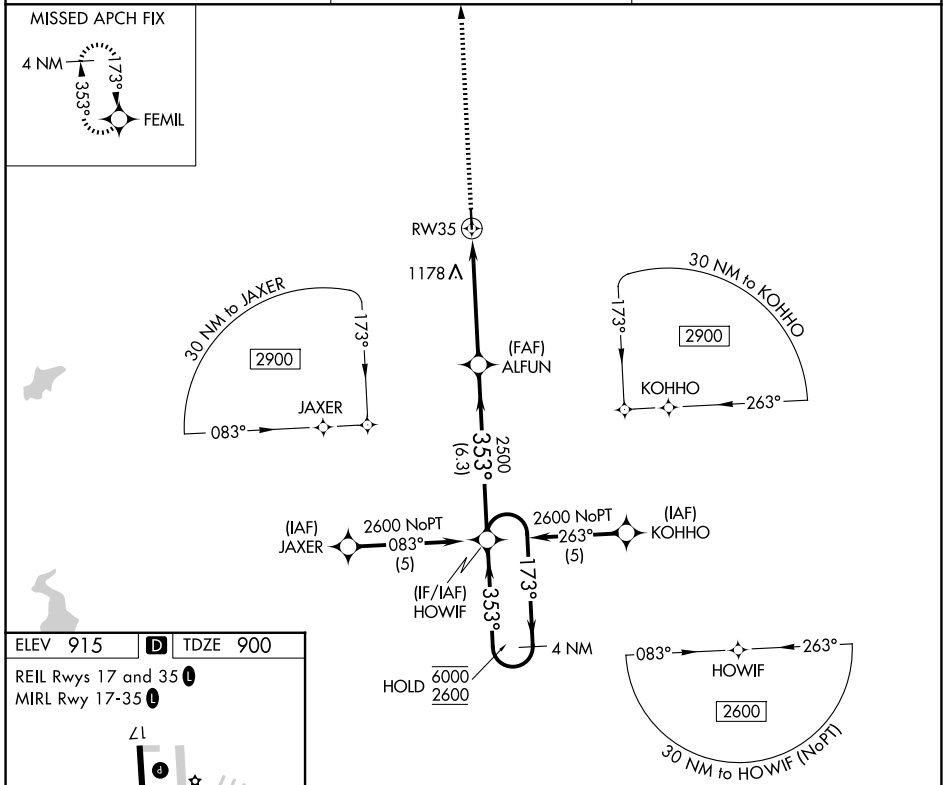
APP CRS	Rwy Ldg	4000
353°	TDZE	900
	Apt Elev	915

RNAV (GPS) RWY 35

LAWRENCE SMITH MEML (L.R.Y)

RNP APCH.	MISSED APPROACH: Climb to 3000 direct FEMIL and hold.
<p>▼ Procedure NA at night.</p> <p>▲ Rwy 35 helicopter visibility reduction below 1 SM NA.</p>	

AWOS-3PT 119.975	KANSAS CITY CENTER 125.55 327.0	UNICOM 122.9 (CTAF) 0
----------------------------	---	---------------------------------



NC-3, 19 MAR 2026 to 16 APR 2026

NC-3, 19 MAR 2026 to 16 APR 2026