

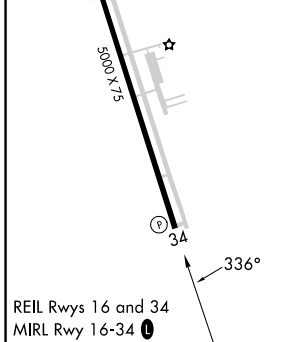
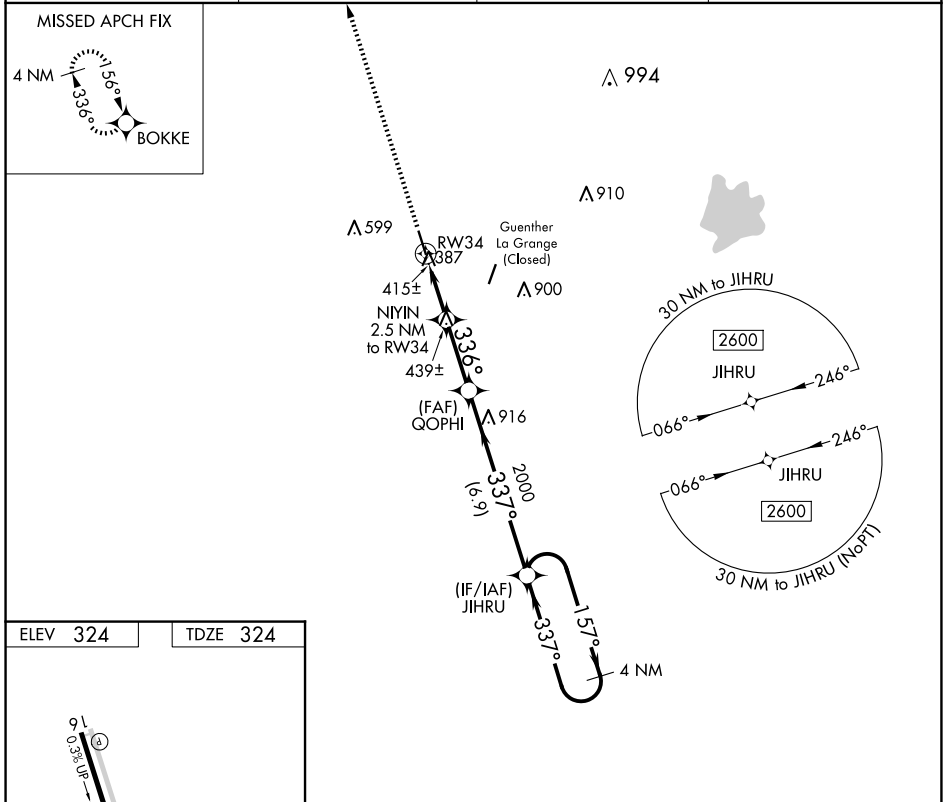
WAAS CH 86929 W34A	APP CRS 336°	Rwy Idg TDZE Apt Elev	5000 324 324
--	------------------------	-----------------------------	---

RNAV (GPS) RWY 34

FAYETTE RGNL AIR CENTER (3T5)

RNP APCH.	MISSED APPROACH: Climb to 2600 direct BOKKE and hold.
<p>▼ When local altimeter setting not received, use Giddings-Lee altimeter setting and increase all MDA 60 feet, increase LP and LNAV Cat C visibility ¼ mile. Rwy 34 helicopter visibility reduction below ¾ SM NA.</p>	

AWOS-3 124.175	AUSTIN APP CON 120.875 270.25	GCO 121.725	UNICOM 122.7 (CTAF) 0
--------------------------	---	-----------------------	---------------------------------



2600	BOKKE	VGSI and descent angles not coincident (VGSI angle 3.00°/TCH 31).	4 NM Holding Pattern	
↑	✧			
	NIYIN 2.5 NM to RWY 34	QOPHI ≤ 3.00° TCH 40	JIHRU	
	RWY 34	1160	2000	
	2.5 NM	2.6 NM	6.9 NM	
337°	336°	337°	157°	
			← 337° → 2600	
CATEGORY	A	B	C	D
LP MDA	700-1 376 (400-1)			NA
LNAV MDA	740-1 416 (500-1)		740-1½ 416 (500-1½)	NA