

(KER4.KER) 25051
KERMIT FOUR DEPARTURE

AL-9155 (FAA)

CONCORD-PADGETT RGNL (JQF)
 CONCORD, NORTH CAROLINA

CHARLOTTE DEP CON
 128.325 307.8
 ATIS
 133.675
 CLNC DEL
 118.55
 CLNC DEL (when twr closed)
 127.25
 GND CON
 121.85
 CONCORD TOWER *
 134.65 (CTAF)
 UNICOM
 122.95

RADAR and DME required.

**TOP ALTITUDE:
 3000**

PULASKI
 116.8 PSK
 Chan 115

BARRETS MOUNTAIN
 113.75 BZM
 Chan 84(Y)

LIBERTY
 113.0 LIB
 Chan 77

RALEIGH/DURHAM
 117.2 RDU
 Chan 119

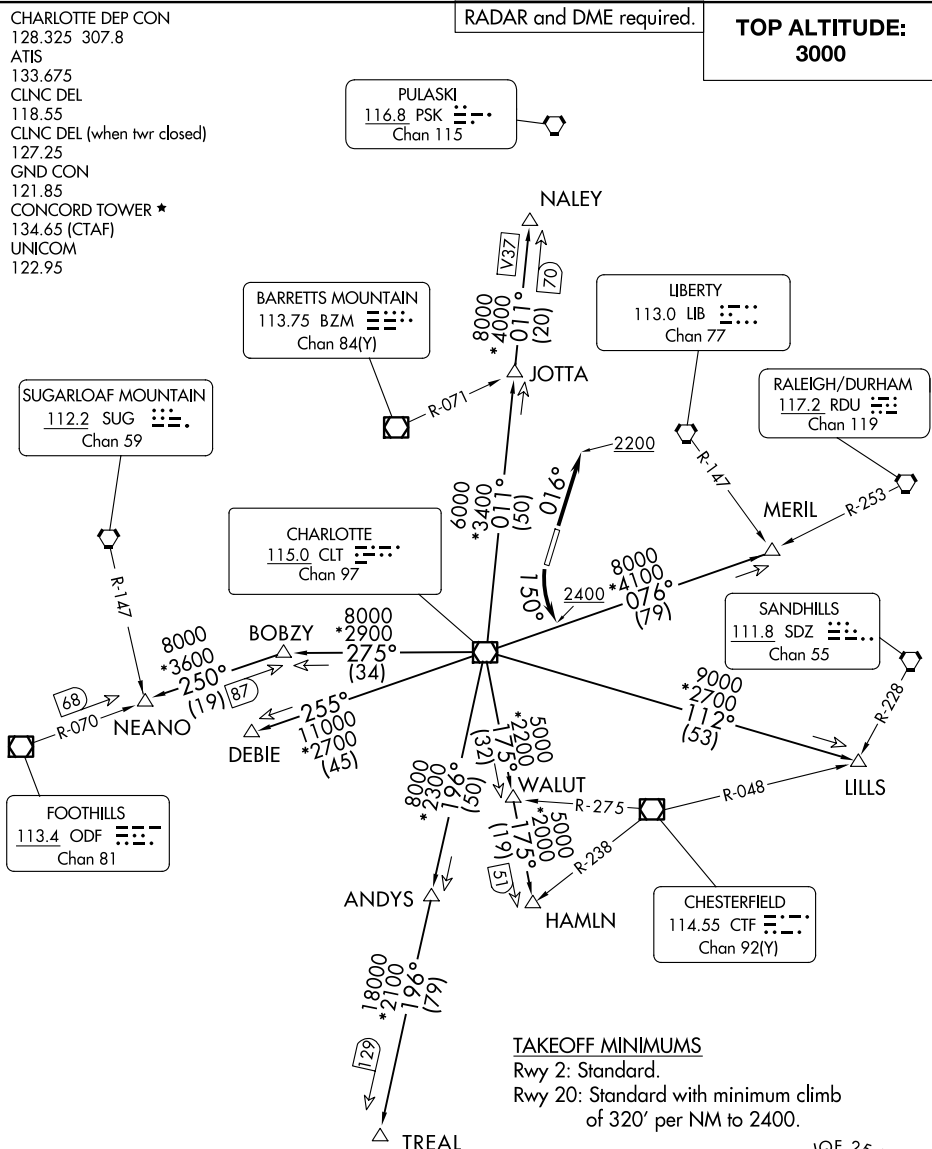
SUGARLOAF MOUNTAIN
 112.2 SUG
 Chan 59

CHARLOTTE
 115.0 CLT
 Chan 97

SANDHILLS
 111.8 SDZ
 Chan 55

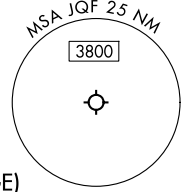
FOOTHILLS
 113.4 ODF
 Chan 81

CHESTERFIELD
 114.55 CTF
 Chan 92(Y)



TAKEOFF MINIMUMS

Rwy 2: Standard.
 Rwy 20: Standard with minimum climb
 of 320' per NM to 2400.



NOTE: For turbo jet aircraft only.
 NOTE: Upon reaching 10000 MSL, accelerate to
 and maintain 280K, if unable advise ATC.
 NOTE: Transponder code will be issued via Concord ATCT
 or Charlotte clearance delivery.

NOTE: Chart not to scale.

(CONTINUED ON FOLLOWING PAGE)

SE-2, 19 MAR 2026 to 16 APR 2026

SE-2, 19 MAR 2026 to 16 APR 2026

KERMIT FOUR DEPARTURE
 (KER4.KER) 21MAR24

CONCORD, NORTH CAROLINA
 CONCORD-PADGETT RGNL (JQF)

KERMIT FOUR DEPARTURE



DEPARTURE ROUTE DESCRIPTION

TAKEOFF RUNWAY 2: Climb on heading 016° to 2200, thence

TAKEOFF RUNWAY 20: Climbing left turn heading 150° to 2400, thence

. . . . on RADAR vectors to intercept filed/assigned transition or enroute fix/navaid.
Maintain 3000, expect filed altitude/flight level 10 minutes after departure.

- ANDYS TRANSITION (KER4.ANDYS): From over CLT VOR/DME on CLT R-196 to ANDYS.
- DEBIE TRANSITION (KER4.DEBIE): From over CLT VOR/DME on CLT R-255 to DEBIE.
- HAMLN TRANSITION (KER4.HAMLN): From over CLT VOR/DME on CLT R-175 to HAMLN.
- JOTTA TRANSITION (KER4.JOTTA): From over CLT VOR/DME on CLT R-011 to JOTTA.
- LILLS TRANSITION (KER4.LILLS): From over CLT VOR/DME on CLT R-112 to LILLS.
- MERIL TRANSITION (KER4.MERIL): From over CLT VOR/DME on CLT R-076 to MERIL.
- NALEY TRANSITION (KER4.NALEY): From over CLT VOR/DME on CLT R-011 to NALEY.
- NEANO TRANSITION (KER4.NEANO): From over CLT VOR/DME on CLT R-275 to BOBZY, then on ODF R-070 to NEANO.
- TREAL TRANSITION (KER4.TREAL): From over CLT VOR/DME on CLT R-196 to TREAL.

SE-2, 19 MAR 2026 to 16 APR 2026

SE-2, 19 MAR 2026 to 16 APR 2026