

# KNIGHTS THREE DEPARTURE

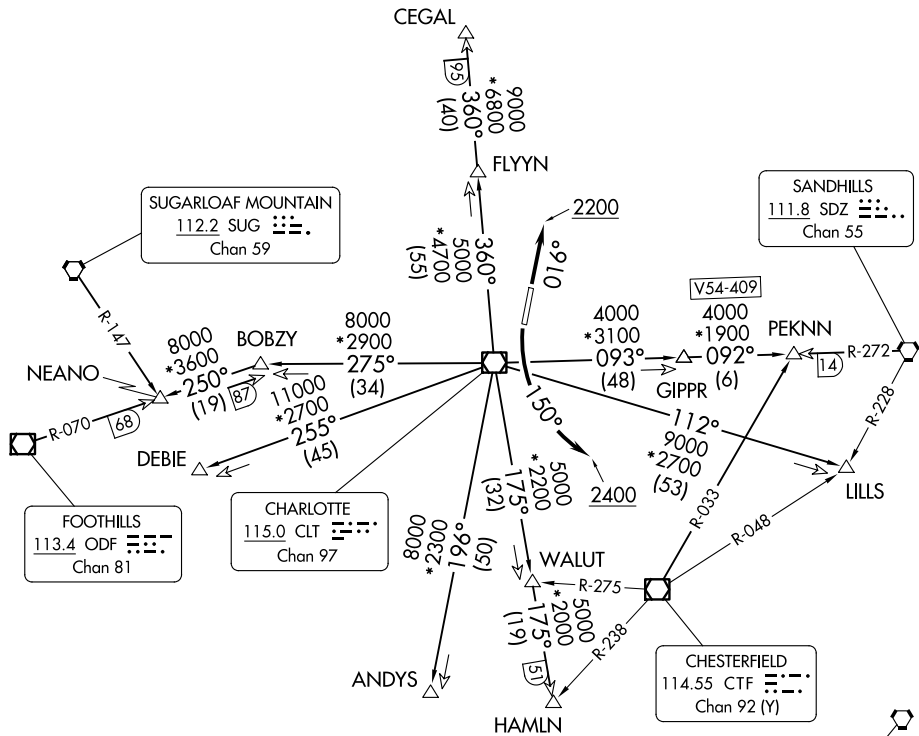
CHARLOTTE DEP CON  
128.325 307.8  
ATIS  
133.675  
CLNC DEL  
118.55  
CLNC DEL (when twr closed)  
127.25  
GND CON  
121.85  
CONCORD TOWER ★  
134.65 (CTAF)  
UNICOM  
122.95

**TOP ALTITUDE:  
3000**

RADAR and DME required.

### TAKEOFF MINIMUMS

Rwy 2: Standard.  
Rwy 20: Standard with minimum climb of 320' per NM to 2400.



SE-2, 19 MAR 2026 to 16 APR 2026

SE-2, 19 MAR 2026 to 16 APR 2026

- NOTE: For propeller aircraft only.
- NOTE: Turboprops: Operate in a manner that will result in best forward speed and climb rate.
- NOTE: Transponder code will be issued via Concord ATCT or Charlotte clearance delivery.

(CONTINUED ON FOLLOWING PAGE)

NOTE: Chart not to scale.

# KNIGHTS THREE DEPARTURE

# KNIGHTS THREE DEPARTURE



## DEPARTURE ROUTE DESCRIPTION

TAKEOFF RUNWAY 2: Climb on heading 016° to 2200, thence. . . .

TAKEOFF RUNWAY 20: Climbing left turn heading 150° to 2400, thence. . . .

. . . .expect RADAR vectors to intercept filed/assigned transition or enroute fix/navaid.  
Maintain 3000, expect filed altitude/flight level 10 minutes after departure.

ANDYS TRANSITION (KNI3.ANDYS): From over CLT VOR/DME on CLT R-196 to ANDYS.

CEGAL TRANSITION (KNI3.CEGAL): From over CLT VOR/DME on CLT R-360 to CEGAL.

DEBIE TRANSITION (KNI3.DEBIE): From over CLT VOR/DME on CLT R-255 to DEBIE.

FLYYN TRANSITION (KNI3.FLYYN): From over CLT VOR/DME on CLT R-360 to FLYYN.

HAMLN TRANSITION (KNI3.HAMLN): From over CLT VOR/DME on CLT R-175 to HAMLN.

LILLS TRANSITION (KNI3.LILLS): From over CLT VOR/DME on CLT R-112 to LILLS.

NEANO TRANSITION (KNI3.NEANO): From over CLT VOR/DME on CLT R-275 to BOBZY,  
then on ODF R-070 to NEANO.

PEKNN TRANSITION (KNI3.PEKNN): From over CLT VOR/DME on CLT R-093 to GIPPR,  
then on SDZ R-272 to PEKNN.

SE-2, 19 MAR 2026 to 16 APR 2026

SE-2, 19 MAR 2026 to 16 APR 2026