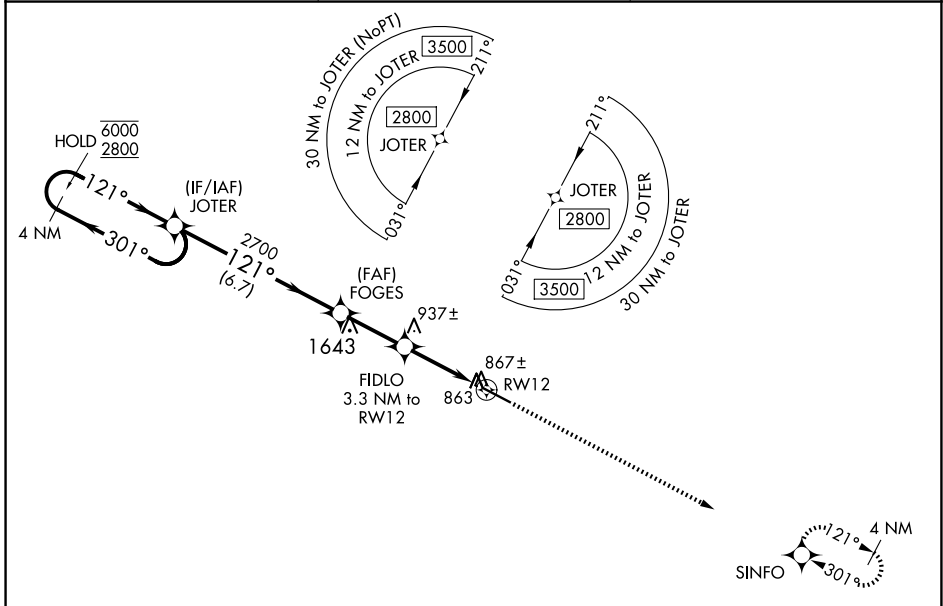


WAAS CH <b>63115</b> <b>W12A</b>	APP CRS <b>121°</b>	Rwy Idg TDZE <b>791</b> Apt Elev <b>798</b>	<b>5525</b>
--	------------------------	---	-------------

# RNAV (GPS) RWY 12

THOMASTON-UPSON COUNTY (OPN)

RNP APCH-GPS.		MISSED APPROACH: Climb to 2600 direct SINFO and hold.
<p><b>T</b> Rwy 12 helicopter visibility reduction below 3/4 SM NA. For uncompensated Baro-VNAV systems, LNAV/VNAV NA below -16°C or above 54°C.</p>	AWOS-3 <b>133.975</b>	ATLANTA APP CON ★ <b>124.2 279.6</b>
		UNICOM <b>122.8 (CTAF)</b>



SE-4, 19 MAR 2026 to 16 APR 2026

SE-4, 19 MAR 2026 to 16 APR 2026

ELEV 798	<b>D</b>	TDZE 791
----------	----------	----------

VGSI and RNAV glidepath not coincident (VGSI Angle 3.50/TCH 32).

4 NM Holding Pattern	JOTER	FOGES	FIDLO	RWY 12
6000 ← 301°	2800 → 121°	2700	1860	0.8 NM to RWY 12
GP 3.00°				
TCH 40				
	6.7 NM	2.6 NM	2.5	0.8
CATEGORY	A	B	C	D
LPV DA		1041-3/4	250 (300-3/4)	
LNAV/VNAV MDA		1041-3/4	250 (300-3/4)	
LNAV MDA		1120-1	329 (400-1)	
CIRCLING	1220-1 422 (500-1)	1260-1 462 (500-1)	1260-1 1/2 462 (500-1 1/2)	1680-3 882 (900-3)

