

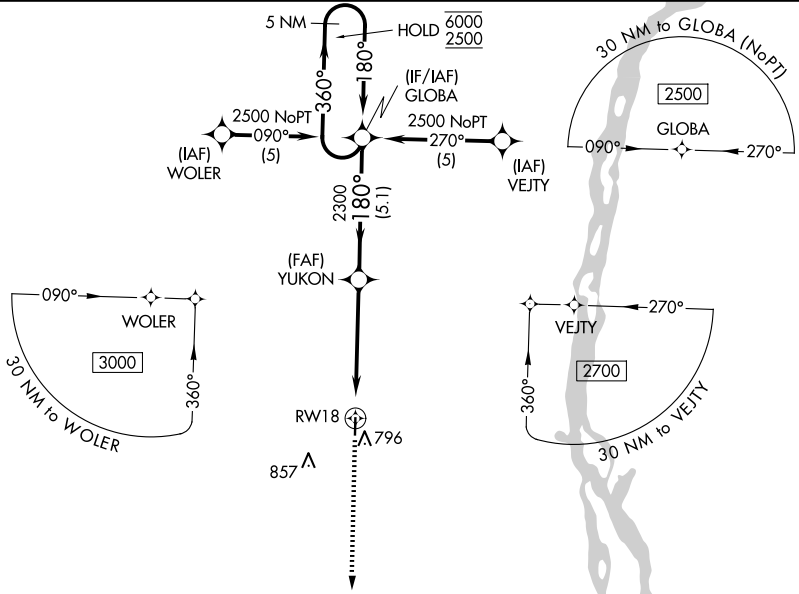
WAAS CH 50401 W18A	APP CRS 180°	Rwy Ldg TDZE Apt Elev	3500 675 675
--	------------------------	-----------------------------	---

RNAV (GPS) RWY 18

LEWIS COUNTY RGNL (6M6)

RNP APCH.	<p>Baro-VNAV NA. Use Quincy altimeter setting; when not received use Kirksville altimeter setting: increase LPV DA to 1098 feet; increase LNAV/VNAV DA to 1145 feet; increase all MDA 80 feet.</p>	<p>MISSED APPROACH: Climb to 2300 direct GRITE and hold.</p>
-----------	---	--

UIN ASOS 121.425	KANSAS CITY CENTER 126.225 317.775	UNICOM 122.7 (CTAF) 0
----------------------------	--	---------------------------------



ELEV 675	TDZE 675
180° 8 L 0.3% UP 3500 X 60 36	
MIRL Rwy 18-36	

GRITE 360° 180° 4 NM		4 NM Holding Pattern GLOBA 360° → 6000 ← 180° 2500 2300 2300 GP 3.00° TCH 40°	
YUKON 2300 RWY 18 4.9 NM 5.1 NM			
CATEGORY	A	B	C D
LPV DA	1035-1¼	360 (400-1¼)	NA
LNAV/VNAV DA	1082-1½	407 (500-1½)	NA
LNAV MDA	1220-1	545 (600-1)	NA

NC-3, 19 MAR 2026 to 16 APR 2026

NC-3, 19 MAR 2026 to 16 APR 2026