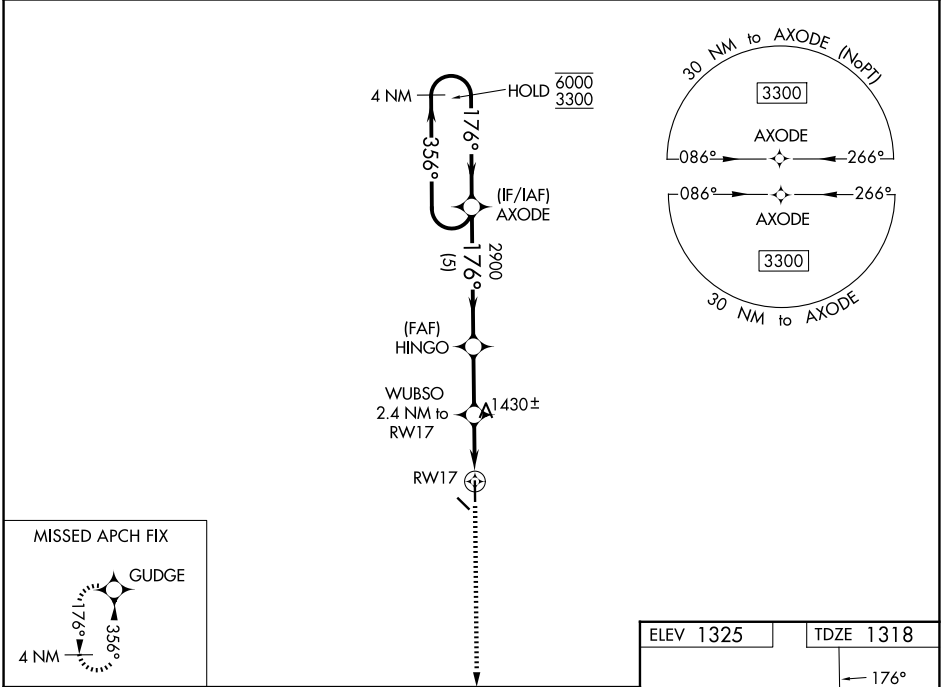


WAAS CH 58034 W17A	APP CRS 176°	Rwy Ldg TDZE Apt Elev	4200 1318 1325
--	------------------------	-----------------------------	---

RNAV (GPS) RWY 17

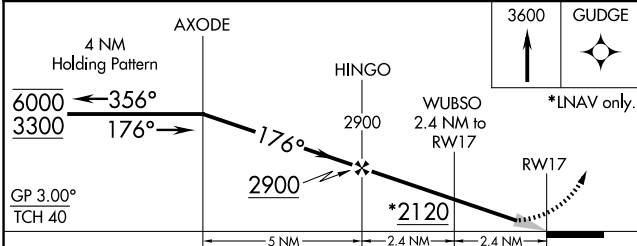
SCRIBNER STATE (SCB)

RNP APCH.		MISSED APPROACH: Climb to 3600 direct GUDGE and hold.
▽ Baro-VNAV NA. Use Fremont altimeter setting, when not received, use Wahoo altimeter setting and increase LPV DA to 1592 feet, LNAV/VNAV DA to 1638 feet and all MDAs 40 feet, increase LPV Cats A/B visibility 1/8 SM.		
FET AWOS-3 121.275	OMAHA APP CON 135.875 354.05	CTAF 122.9



NC-2, 19 MAR 2026 to 16 APR 2026

NC-2, 19 MAR 2026 to 16 APR 2026



CATEGORY	A	B	C	D
LPV DA	1568-3/4	250 (300-3/4)		NA
LNAV/VNAV DA	1614-1	296 (300-1)		NA
LNAV MDA	1740-1	422 (500-1)		NA
CIRCLING	1900-1	575 (600-1)		NA

