

KUSSO TWO DEPARTURE (RNAV)
(KUSSO2.KUSSO) 22JAN26

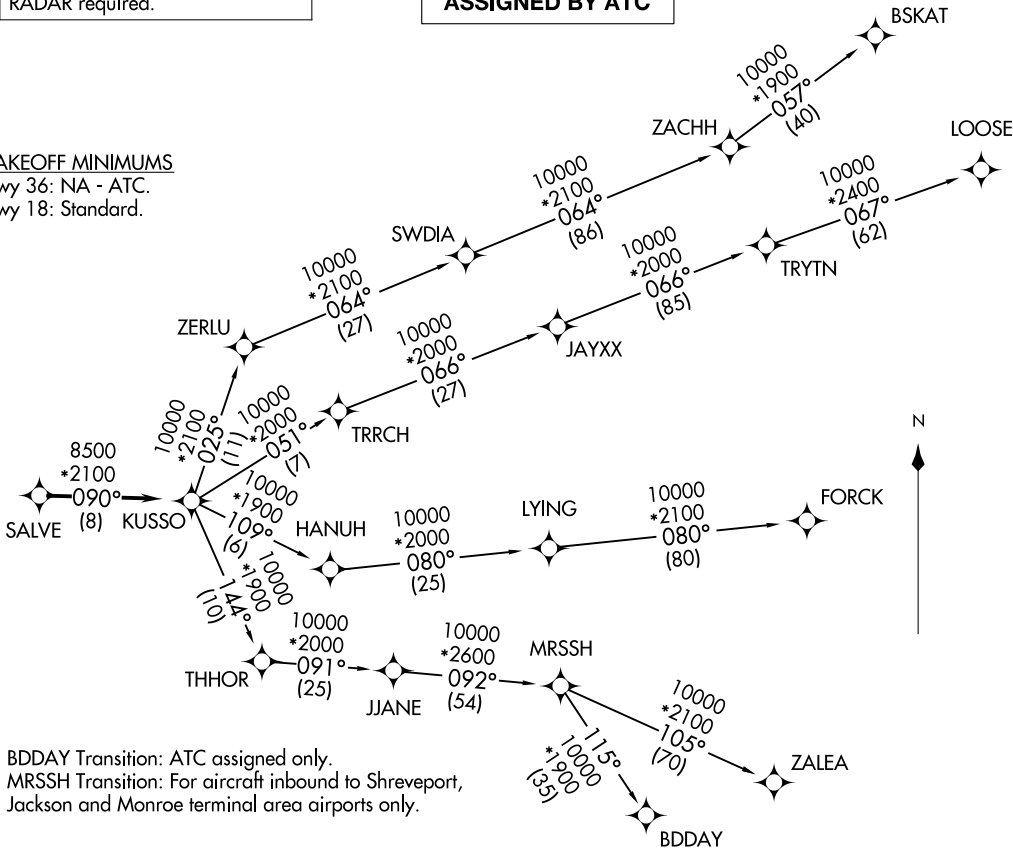
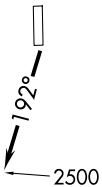
LONE STAR DEP CON
135.975 379.9
GND CON
121.15
GRAND PRAIRIE TOWER ★
128.55 (CTAF)

RNAV 1 - DME/DME/IRU or GPS.
RADAR required.

**TOP ALTITUDE:
ASSIGNED BY ATC**

TAKEOFF MINIMUMS

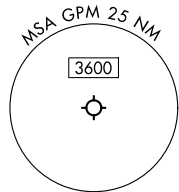
Rwy 36: NA - ATC.
Rwy 18: Standard.



NOTE: BDDAY Transition: ATC assigned only.
NOTE: MRSSH Transition: For aircraft inbound to Shreveport,
Jackson and Monroe terminal area airports only.

(CONTINUED ON FOLLOWING PAGE)

NOTE: Chart not to scale.



GRAND PRAIRIE, TEXAS
GRAND PRAIRIE MUNI (GPM)
(KUSSO2.KUSSO) 22JAN26

(KUSSO2.KUSSO) 26022
KUSSO TWO DEPARTURE (RNAV)

AL-9209 (FAA)

GRAND PRAIRIE MUNI (GPM)
GRAND PRAIRIE, TEXAS

KUSSO TWO DEPARTURE (RNAV)



DEPARTURE ROUTE DESCRIPTION

TAKEOFF RUNWAY 18: Climb on heading 192° to 2500 before proceeding on course.

When entering controlled airspace, fly heading assigned by ATC, expect vector to SALVE, then on track 090° to KUSSO, then on assigned transition. Maintain ATC assigned altitude, expect filed altitude 10 minutes after departure.

- BDDAY TRANSITION (KUSSO2.BDDAY)
- BSKAT TRANSITION (KUSSO2.BSKAT)
- FORCK TRANSITION (KUSSO2.FORCK)
- LOOSE TRANSITION (KUSSO2.LOOSE)
- MRSSH TRANSITION (KUSSO2.MRSSH)
- ZALEA TRANSITION (KUSSO2.ZALEA)

SC-2, 19 MAR 2026 to 16 APR 2026

SC-2, 19 MAR 2026 to 16 APR 2026