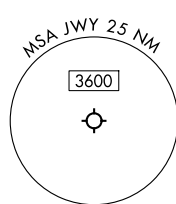


RNAV 1 - DME/DME/IRU or GPS required.
RADAR required for non-GPS equipped aircraft.

LONE STAR DEP CON
125.2 343.65
CTAF
122.975

TAKEOFF MINIMUMS
Rwys 18, 36: Standard.



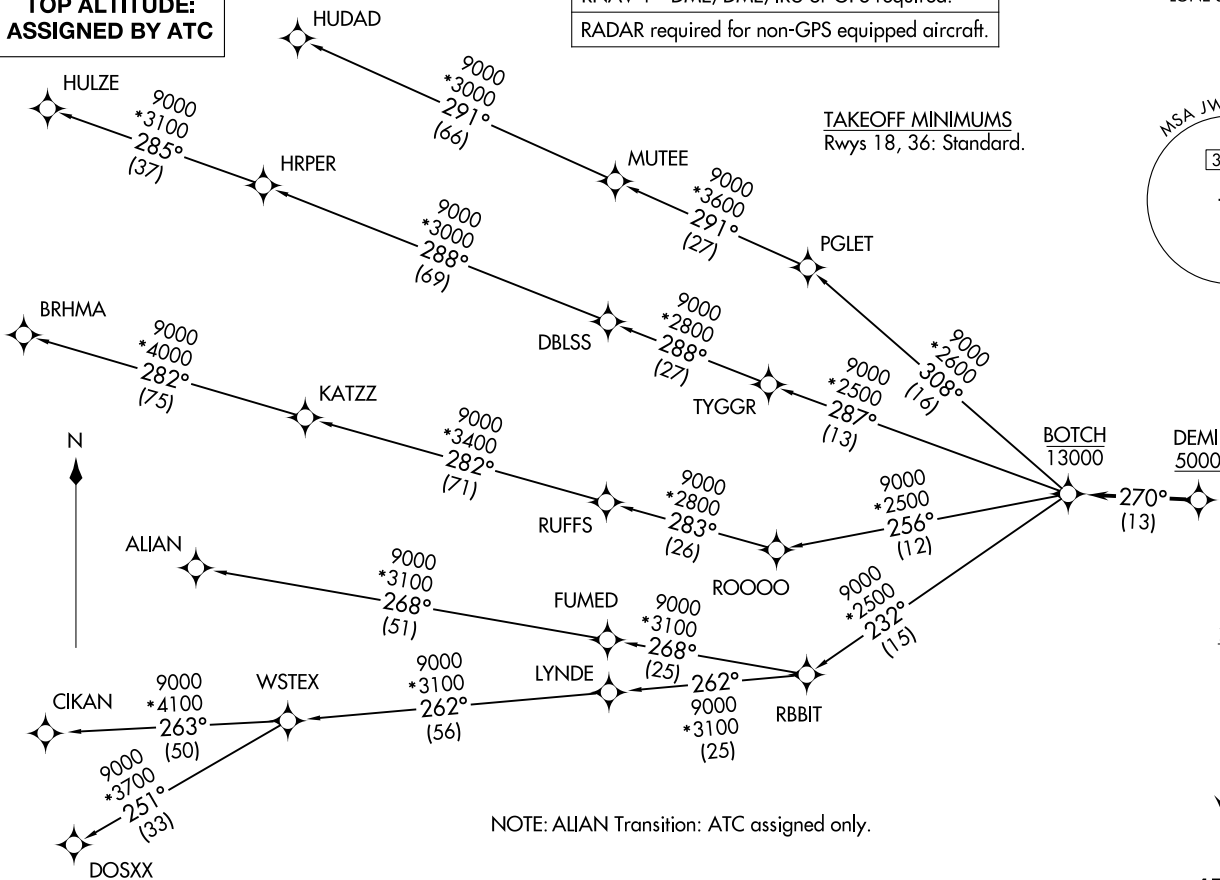
TOP ALTITUDE:
ASSIGNED BY ATC

BOTCH ONE DEPARTURE (RNAV)
(BOTCH1 .BOTCH) 17ZAPR25

(BOTCH1 .BOTCH) 25107
BOTCH ONE DEPARTURE (RNAV)

AL-9212 (FAA)

MID-WAY RGNL (JWY)
MIDLOTHIAN/WAXAHACHIE, TEXAS



NOTE: ALIAN Transition: ATC assigned only.

(CONTINUED ON FOLLOWING PAGE)

NOTE: Chart not to scale.

BOTCH ONE DEPARTURE (RNAV)



DEPARTURE ROUTE DESCRIPTION

TAKEOFF RUNWAY 18: Climb on heading 178° to 1700, then on heading 317° or as assigned by ATC, for vectors to cross DEMIL at or above 5000, thence. . .

TAKEOFF RUNWAY 36: Climb on heading 358° to 2700, then on heading 315° or as assigned by ATC, for vectors to cross DEMIL at or above 5000, thence. . .

. . . on track 270° to cross BOTCH at or below 13000, then on (transition). Maintain ATC assigned altitude, expect filed altitude 10 minutes after departure.

ALIAN TRANSITION (BOTCH1.ALIAN)

BRHMA TRANSITION (BOTCH1.BRHMA)

CIKAN TRANSITION (BOTCH1.CIKAN)

DOSXX TRANSITION (BOTCH1.DOSXX)

HUDAD TRANSITION (BOTCH1.HUDAD)

HULZE TRANSITION (BOTCH1.HULZE)

WSTEX TRANSITION (BOTCH1.WSTEX)

SC-2, 19 MAR 2026 to 16 APR 2026

SC-2, 19 MAR 2026 to 16 APR 2026