

GARLAND SIX DEPARTURE  
(GARL6.TT) 17APR25

MIDLOTHIAN/WAXAHACHIE, TEXAS  
MID-WAY RGNL (JWY)

LONE STAR DEP CON  
125.2 343.65  
CTAF  
122.975

**TOP ALTITUDE:  
ASSIGNED BY ATC**

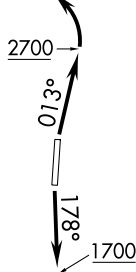
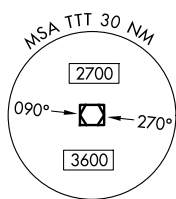
TAKEOFF MINIMUMS  
Rwys 18, 36: Standard.

RADAR and DME required.

NOTE: SOLDO Transition: ATC assigned.

NOTE: Chart not to scale.

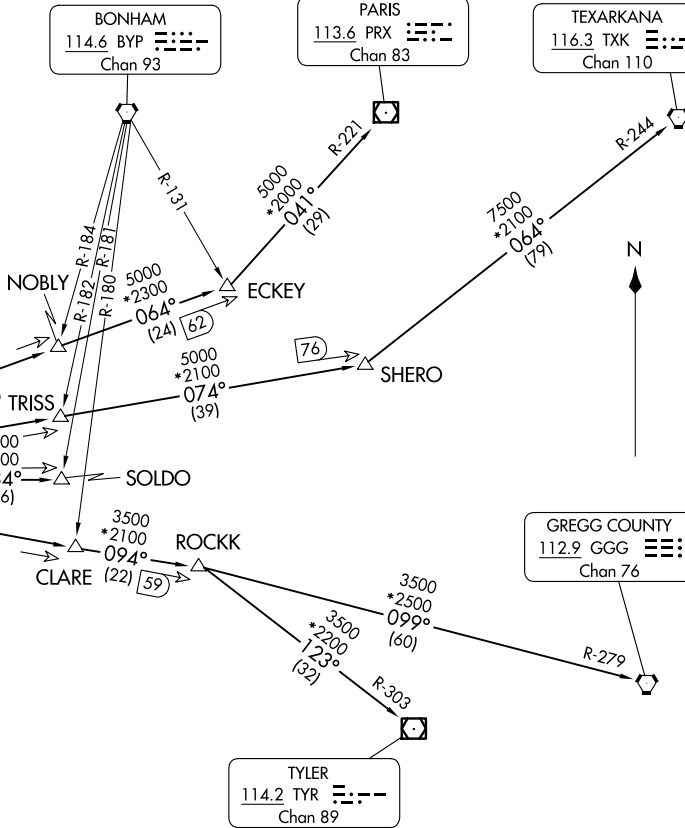
MAVERICK  
113.1 TTT  
Chan 78



BONHAM  
114.6 BYP  
Chan 93

PARIS  
113.6 PRX  
Chan 83

TEXARKANA  
116.3 TXK  
Chan 110



(GARL6.TT) 25107  
GARLAND SIX DEPARTURE

AL-9212 (FAA)

MID-WAY RGNL (JWY)  
MIDLOTHIAN/WAXAHACHIE, TEXAS

(CONTINUED ON FOLLOWING PAGE)

# GARLAND SIX DEPARTURE



## DEPARTURE ROUTE DESCRIPTION

TAKEOFF RUNWAY 18: Climb on heading 178° to 1700 before proceeding northbound.

TAKEOFF RUNWAY 36: Climb on heading 013° to 2700 before turning left.

When entering controlled airspace, fly assigned heading for RADAR vectors to appropriate route. Maintain ATC assigned altitude.

GREGG COUNTY TRANSITION (GARL6.GGG): From over TTT VOR/DME on TTT R-094 to ROCKK, then on GGG R-279 to GGG VORTAC.

PARIS TRANSITION (GARL6.PRX): From over TTT VOR/DME on TTT R-064 to ECKEY, then on PRX R-221 to PRX VOR/DME.

SOLDO TRANSITION (GARL6.SOLDO): From over TTT VOR/DME on TTT R-084 to SOLDO.

TEXARKANA TRANSITION (GARL6.TXK): From over TTT VOR/DME on TTT R-074 to SHERO, then on TXK R-244 to TXK VORTAC.

TYLER TRANSITION (GARL6.TYR): From over TTT VOR/DME on TTT R-094 to ROCKK, then on TYR R-303 to TYR VOR/DME.

SC-2, 19 MAR 2026 to 16 APR 2026

SC-2, 19 MAR 2026 to 16 APR 2026