

KUSSO TWO DEPARTURE (RNAV)  
(KUSSO2.KUSSO) 22JAN26

(KUSSO2.KUSSO) 26022  
KUSSO TWO DEPARTURE (RNAV)

AL-9212 (FAA)

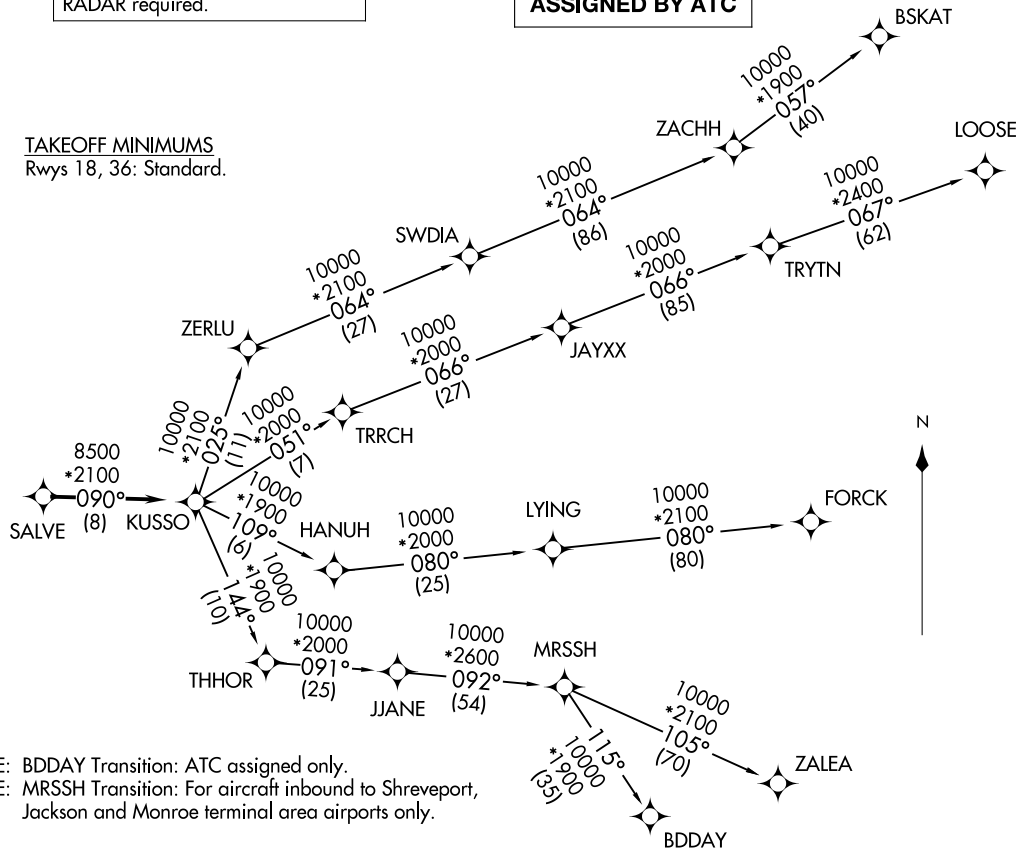
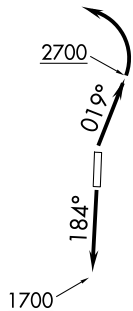
MID-WAY RGNL (JWY)  
MIDLOTHIAN/WAHAHACHE, TEXAS

LONE STAR DEP CON  
125.2 343.65  
CTAF  
122.975

RNAV 1 - DME/DME/IRU or GPS.  
RADAR required.

**TOP ALTITUDE:  
ASSIGNED BY ATC**

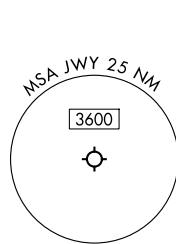
TAKEOFF MINIMUMS  
Rwys 18, 36: Standard.



NOTE: BDDAY Transition: ATC assigned only.  
NOTE: MRSSH Transition: For aircraft inbound to Shreveport,  
Jackson and Monroe terminal area airports only.

(CONTINUED ON FOLLOWING PAGE)

NOTE: Chart not to scale.



MIDLOTHIAN/WAHAHACHE, TEXAS  
MID-WAY RGNL (JWY)

# KUSSO TWO DEPARTURE (RNAV)



## DEPARTURE ROUTE DESCRIPTION

TAKEOFF RUNWAY 18: Climb on heading 184° to 1700 before proceeding northbound.  
TAKEOFF RUNWAY 36: Climb on heading 019° to 2700 before turning left.

When entering controlled airspace, fly heading assigned by ATC, expect vector to SALVE, then on track 090° to KUSSO, then on assigned transition. Maintain ATC assigned altitude, expect filed altitude 10 minutes after departure.

- BDDAY TRANSITION (KUSSO2.BDDAY)
- BSKAT TRANSITION (KUSSO2.BSKAT)
- FORCK TRANSITION (KUSSO2.FORCK)
- LOOSE TRANSITION (KUSSO2.LOOSE)
- MRSSH TRANSITION (KUSSO2.MRSSH)
- ZALEA TRANSITION (KUSSO2.ZALEA)

SC-2, 19 MAR 2026 to 16 APR 2026

SC-2, 19 MAR 2026 to 16 APR 2026