

LOC/DME I-CUE <b>110.55</b> Chan 42 (Y)	APP CRS <b>184°</b>	Rwy Ldg TDZE <b>777</b> Apt Elev <b>777</b>	<b>5502</b>
---	------------------------	---	-------------

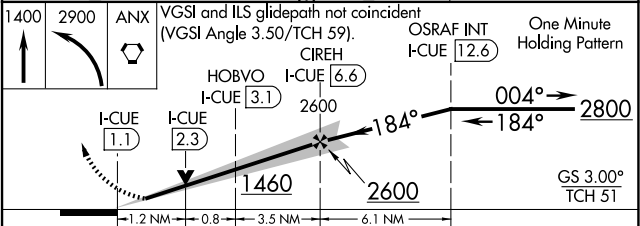
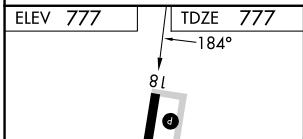
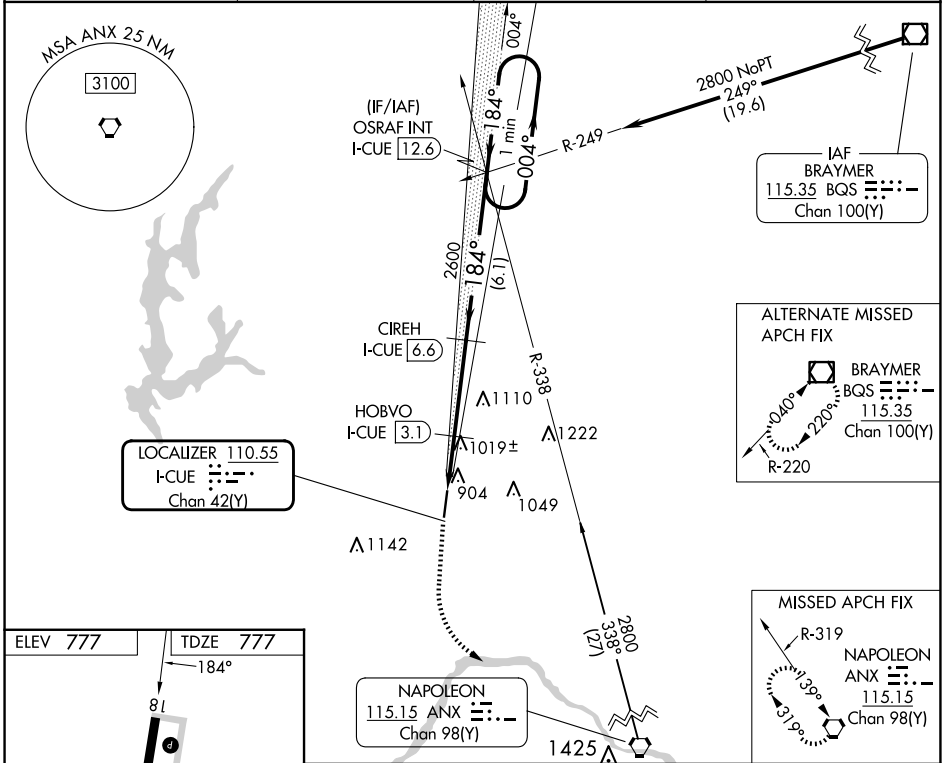
# ILS or LOC/DME RWY 18

MIDWEST NTL AIR CENTER (GPH)

**NA** Obtain local altimeter setting on CTAf; when not received use Kansas City Intl altimeter setting and increase DA 79 feet and all visibilities 1/4 mile; increase all MDAs 80 feet, and Circling visibility Cat C 1/4 mile. Autopilot coupled approach NA below 960.

MISSED APPROACH: Climb to 1400 then climbing left turn to 2900 direct ANX VORTAC and hold.

AWOS-3P <b>120.275</b>	KANSAS CITY APP CON <b>118.4 307.35</b>	CLNC DEL <b>118.2</b>	UNICOM <b>122.7 (CTAF)</b>
---------------------------	--	--------------------------	-------------------------------



CATEGORY	A	B	C	D
S-ILS 18	977-3/4 200 (200-3/4)			NA
S-LOC 18	1280-1	503 (600-1)	1280-1 1/2 503 (600-1 1/2)	NA
CIRCLING	1300-1 523 (600-1)	1320-1 543 (600-1)	1360-1 1/2 583 (600-1 1/2)	NA

NC-3, 19 MAR 2026 to 16 APR 2026

NC-3, 19 MAR 2026 to 16 APR 2026