

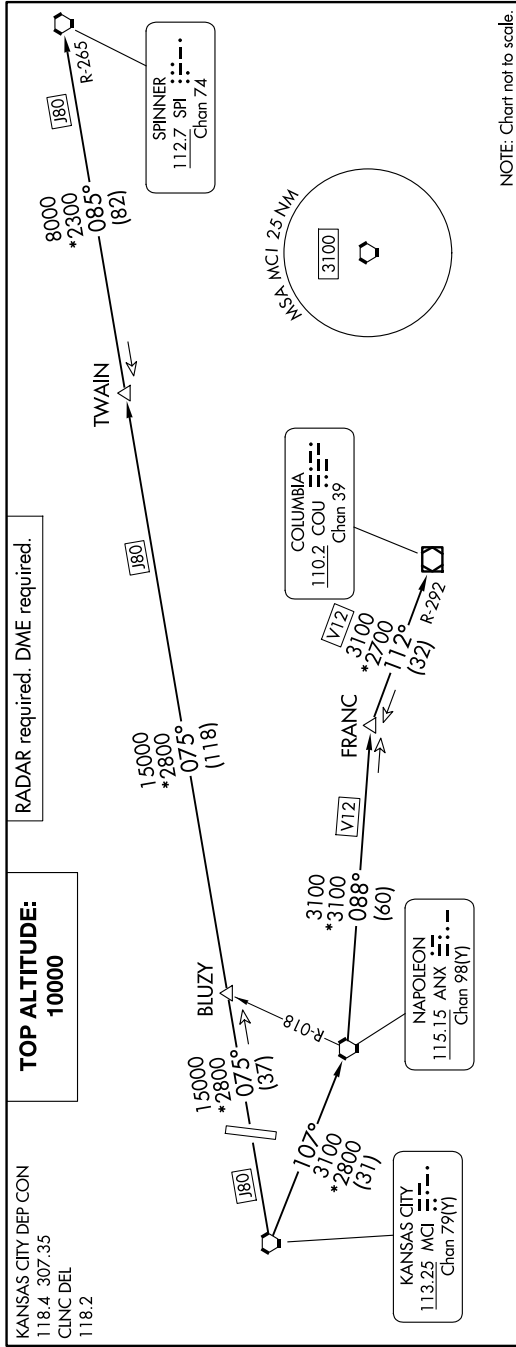
LAKES FIVE DEPARTURE

AL-9229 (FAA)

MIDWEST NTL AIR CENTER (GPH)

MOSBY, MISSOURI

NC-3, 19 MAR 2026 to 16 APR 2026



NOTE: Chart not to scale.

DEPARTURE ROUTE DESCRIPTION

- TAKEOFF ALL RUNWAYS:** Climb on assigned heading for RADAR vectors to appropriate route. Maintain 10000 or as assigned by ATC. Expect filed altitude 10 minutes after departure.
- COLUMBIA TRANSITION (LAKES5.COU):** From over MCI VORTAC on MCI R-107 to ANX VORTAC, then on ANX R-088 and COU R-292 to COU VOR/DME.
- FRANC TRANSITION (LAKES5.FRANC):** From over MCI VORTAC on MCI R-107 to ANX VORTAC, then on ANX R-088 to FRANC.
- SPINNER TRANSITION (LAKES5.SPI):** From over MCI VORTAC on MCI R-075 and SPI R-265 to TWAIN, then on SPI R-265 to SPI VORTAC.
- TWAIN TRANSITION (LAKES5.TWAIN):** From over MCI VORTAC on MCI R-075 and SPI R-265 to TWAIN.

TAKEOFF MINIMUMS
Rwys 18, 36: Standard.

LAKES FIVE DEPARTURE

(LAKES5.MCI) 05OCT23

MIDWEST NTL AIR CENTER (GPH)
MOSBY, MISSOURI

NC-3, 19 MAR 2026 to 16 APR 2026