

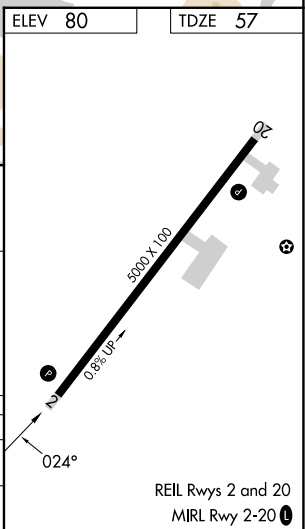
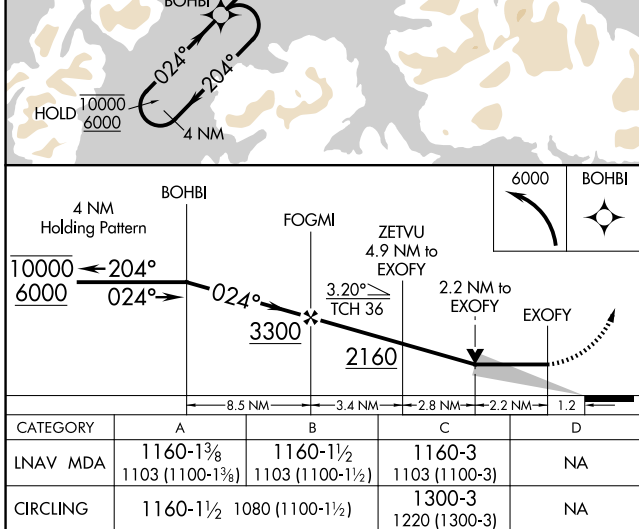
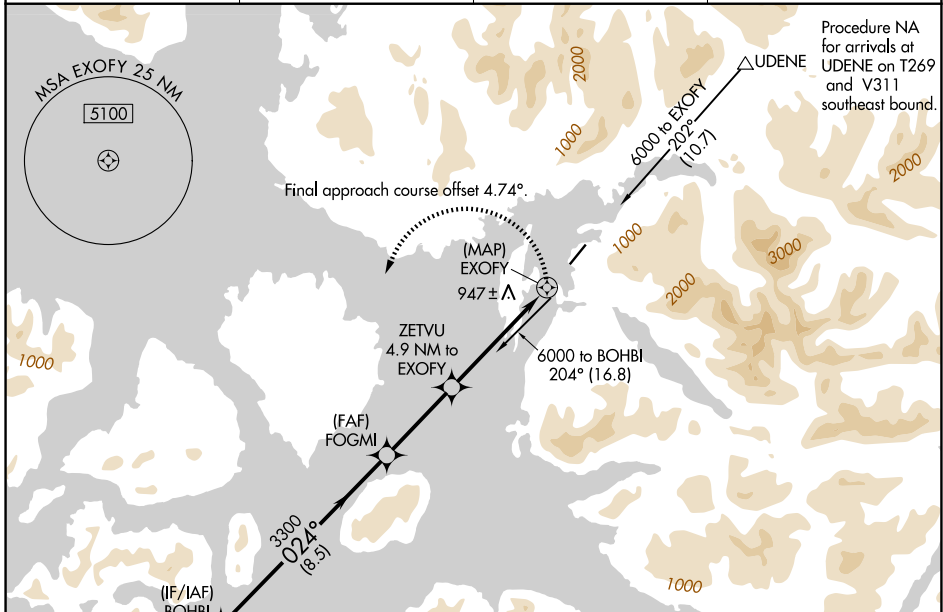
APP CRS	Rwy Ldg	<b>5000</b>
<b>024°</b>	TDZE	<b>57</b>
	Apt Elev	<b>80</b>

# RNAV (GPS) Y RWY 2

KLAWOCK (AKW) (PAKW)

RNP APCH-GPS.	MISSED APPROACH: (Do not exceed 165K until BOHBI) Climbing left turn to 6000 direct BOHBI and hold, continue climb-in-hold to 6000.
⚠ Circling NA east of Rwy 2-20. ⚠ Circling Rwy 20 NA at night. ❄ -10°C	

ASOS <b>135.45</b>	ANCHORAGE CENTER <b>118.5 284.6</b>	KETCHIKAN RADIO <b>122.25</b> <b>0</b>	CTAF <b>120.9</b>
-----------------------	--	---	----------------------



AK, 19 MAR 2026 to 14 MAY 2026

AK, 19 MAR 2026 to 14 MAY 2026