

(TURTY4.TURTY) 18032

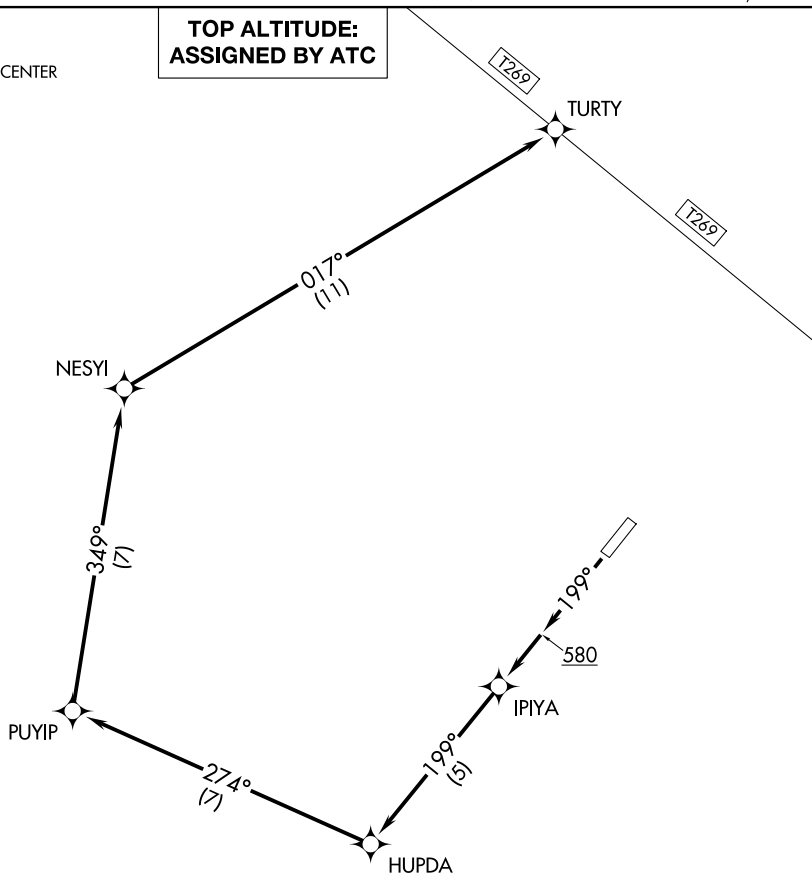
TURTY FOUR DEPARTURE (RNAV)

AL-9230 (FAA)

KLAWOCK (AKW)(PAKW)
KLAWOCK, ALASKA

ASOS
135.45
ANCHORAGE CENTER
118.5 284.6
CTAF
120.9

**TOP ALTITUDE:
ASSIGNED BY ATC**



NOTE: RNAV 1.

NOTE: GPS required.

TAKEOFF MINIMUMS

Rwy 2: NA- Obstacles.

Rwy 20: Standard with a minimum climb of 427' per NM to 2500.

NOTE: Chart not to scale.



DEPARTURE ROUTE DESCRIPTION

TAKEOFF RUNWAY 20: Climb heading 199° to 580, then climb to 6000 direct IPIYA and on depicted route to TURTY, thence

. . . . maintain ATC assigned altitude. Expect clearance to filed altitude 10 minutes after departure.

TURTY FOUR DEPARTURE (RNAV)

(TURTY4.TURTY) 01FEB18

KLAWOCK, ALASKA
KLAWOCK (AKW)(PAKW)

AK, 19 MAR 2026 to 14 MAY 2026

AK, 19 MAR 2026 to 14 MAY 2026