

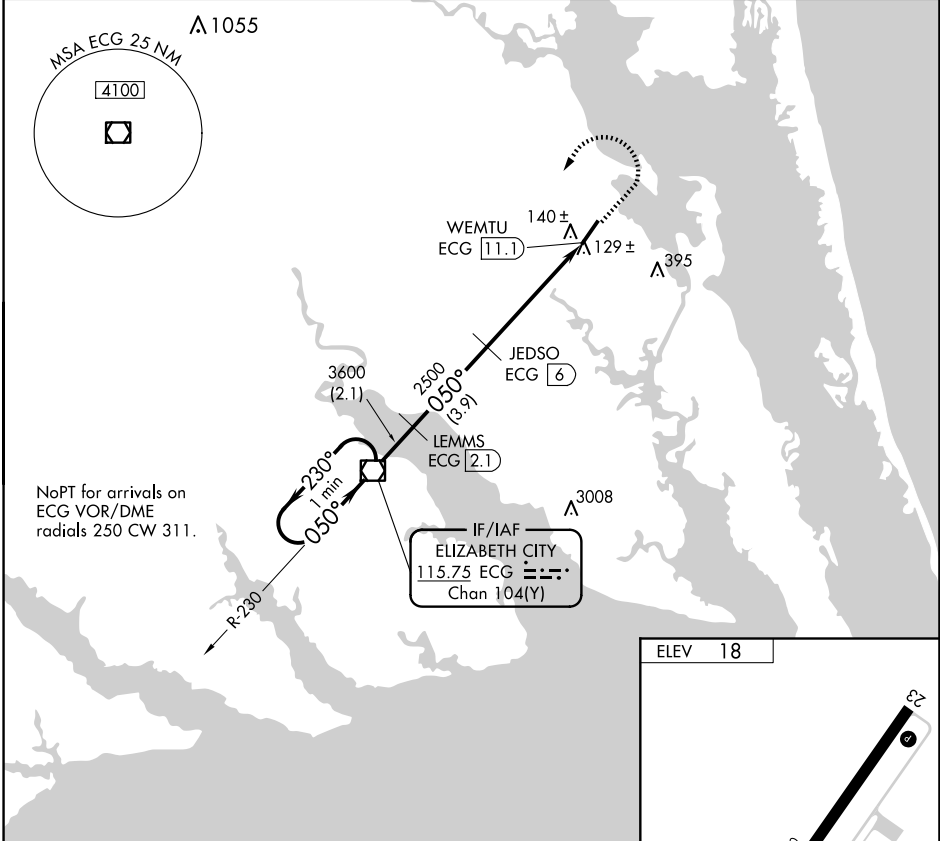
VOR/DME ECG <b>115.75</b> Chan <b>104(Y)</b>	APP CRS <b>050°</b>	Rwy Idg TDZE Apt Elev	<b>N/A</b> <b>N/A</b> <b>18</b>
--	------------------------	-----------------------------	---------------------------------------

**VOR/DME-A**  
CURRITUCK COUNTY RGNL (ONX)

When local altimeter setting not received, use Oceana NAS/Apollo Soucek altimeter setting and increase all MDA 60 feet.  
 Procedure NA when tethered balloon located approximately 11.4 NM southwest of airport is flying.

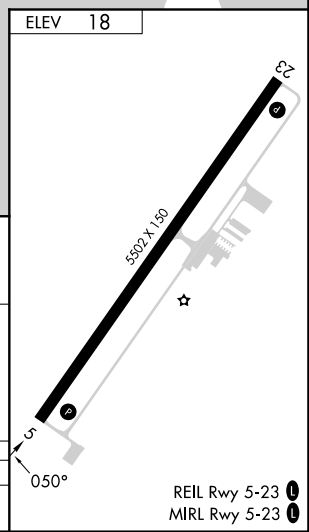
MISSED APPROACH: Climb to 1500 then climbing left turn to 4100 direct ECG VOR/DME and hold, continue climb-in-hold to 4100.

AWOS-3 <b>119.775</b>	OCEANA APP CON <b>123.9 266.8</b>	CTAF <b>122.9 0</b>
--------------------------	--------------------------------------	------------------------



NoPT for arrivals on ECG VOR/DME radials 250 CW 311.

IF/IAF  
ELIZABETH CITY  
115.75 ECG  
Chan 104(Y)



One Minute Holding Pattern	EGC VOR/DME	LEMMS ECG (2.1)	JEDSO ECG (6)	WENTU ECG (11.1)	1500	4100	ECG
4100 ← 230°	050° →	3600	2500		↑	↶	☐
		2.1 NM	3.9 NM	5.1 NM			
CATEGORY	A	B	C	D			
CIRCLING	500-1	482 (500-1)	500-1½ 482 (500-1½)	760-2½ 742 (800-2½)			

SE-2, 19 MAR 2026 to 16 APR 2026

SE-2, 19 MAR 2026 to 16 APR 2026