

WAAS CH 61108 W21A	APP CRS 212°	Rwy Idg TDZE 217 Apt Elev 220	4000
---------------------------------	------------------------	---------------------------------------------------	-------------

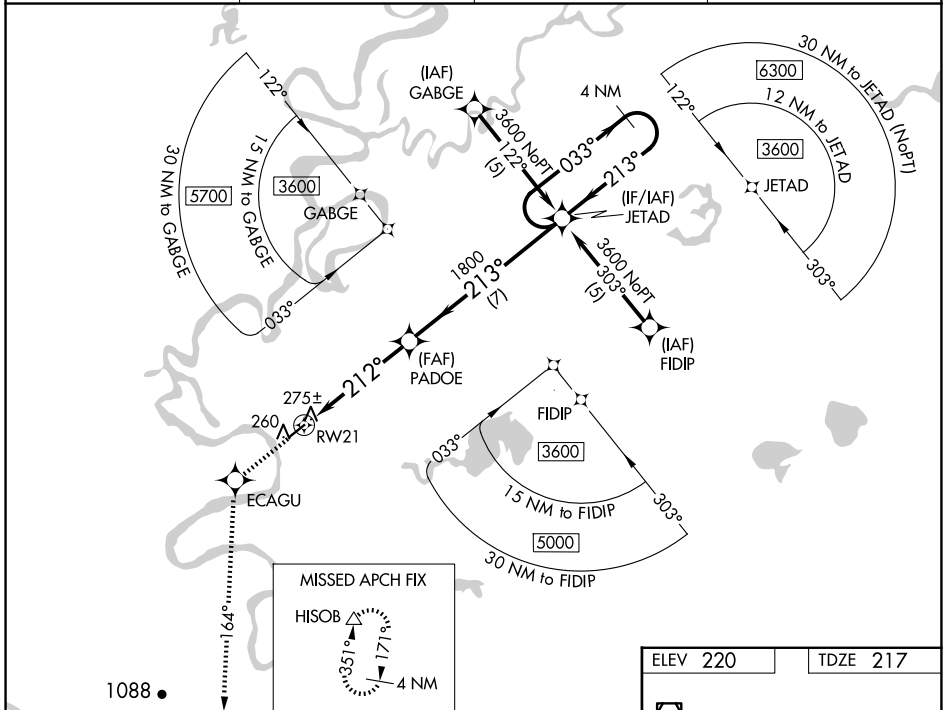
RNAV (GPS) RWY 21

HUSLIA (HLA)(PAHL)

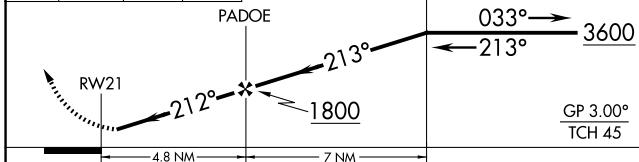
For uncompensated Baro-VNAV systems, LNAV/VNAV NA below -25°C (-13°F) or above 48°C (118°F). Helicopter visibility reduction below ¾ SM NA. DME/DME RNP-0.3 NA.

MISSED APPROACH: Climb to 3000 direct ECAGU and via 164° track to HISOB and hold.

AWOS-3P 135.75	ANCHORAGE CENTER 127.0 290.2	FAIRBANKS RADIO 122.4	UNICOM 122.8 (CTAF) 1
--------------------------	----------------------------------------	---------------------------------	----------------------------------------



3000	ECAGU	HISOB	VGSI and RNAV glidepath not coincident (VGSI Angle 3.00/TCH 25).
↑	✦	△	
	tr 164°		



CATEGORY	A	B	C	D
LPV DA		517-1	300 (300-1)	
LNAV/VNAV DA		549-1¼	332 (400-1¼)	
LNAV MDA		540-1	323 (400-1)	
CIRCLING	600-1 380 (400-1)	680-1 460 (500-1)	680-1½ 460 (500-1½)	780-2 560 (600-2)

ELEV 220	TDZE 217
----------	----------

REIL Rwy 3 and 21 **1**
MIRL Rwy 3-21 **1**

AK, 19 MAR 2026 to 14 MAY 2026

AK, 19 MAR 2026 to 14 MAY 2026