

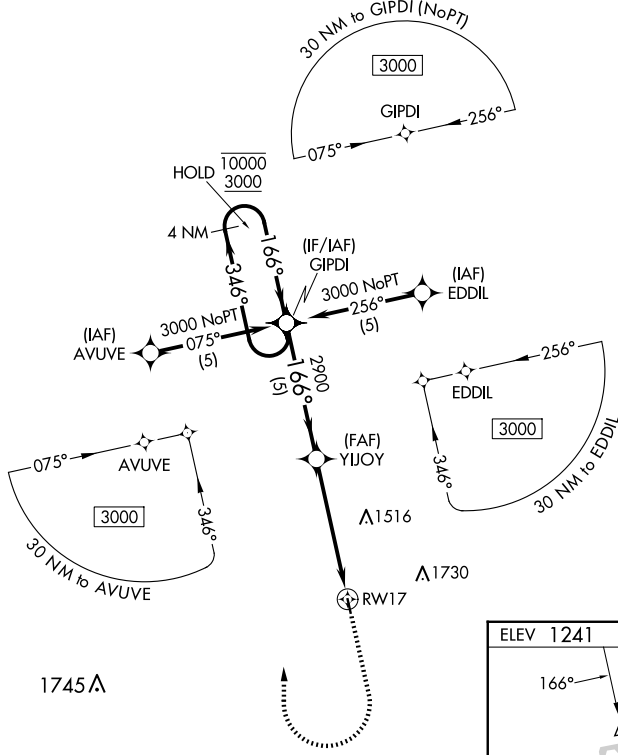
APP CRS	Rwy Idg	<b>2998</b>
<b>166°</b>	TDZE	<b>1241</b>
	Apt Elev	<b>1241</b>

# RNAV (GPS) RWY 17

SALEM MEML (K33)

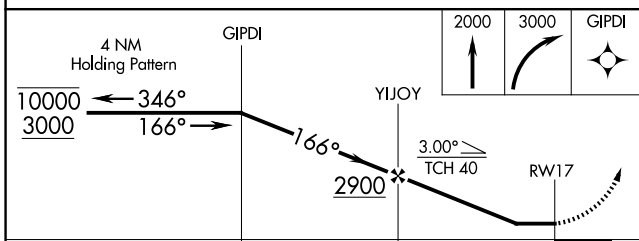
RNP APCH - GPS.	MISSED APPROACH: Climb to 2000 then climbing right turn to 3000 direct GIPDI and hold.
<p>▼ Rwy 17 helicopter visibility reduction below 3/4 SM NA. When VIH</p> <p>▲ NA altimeter setting not received, procedure NA. Use VIH altimeter setting.</p>	

VIH ASOS <b>119.025</b>	KANSAS CITY CENTER <b>128.35 284.675</b>	CTAF <b>122.9</b>
----------------------------	---	----------------------



NC-3, 19 MAR 2026 to 16 APR 2026

NC-3, 19 MAR 2026 to 16 APR 2026



ELEV 1241	TDZE 1241
-----------	-----------

Diagram of RWY 17 showing a 2998 x 60 ft runway with a 0.7% up slope. The runway is labeled with '17' at the start and '35' at the end. A star symbol indicates the runway centerline. The diagram also shows the location of RWY 17-35 and REIL Rwy 17 and 35.

CATEGORY	A	B	C	D
LNVA MDA	1800-1	559 (600-1)	NA	
CIRCLING	1840-1 599 (600-1)	1940-1 699 (700-1)	NA	