

APP CRS	Rwy Idg	6027
227°	TDZE	2429
	Apt Elev	2454

RNAV (GPS) RWY 24

CALIFORNIA CITY MUNI (L71)

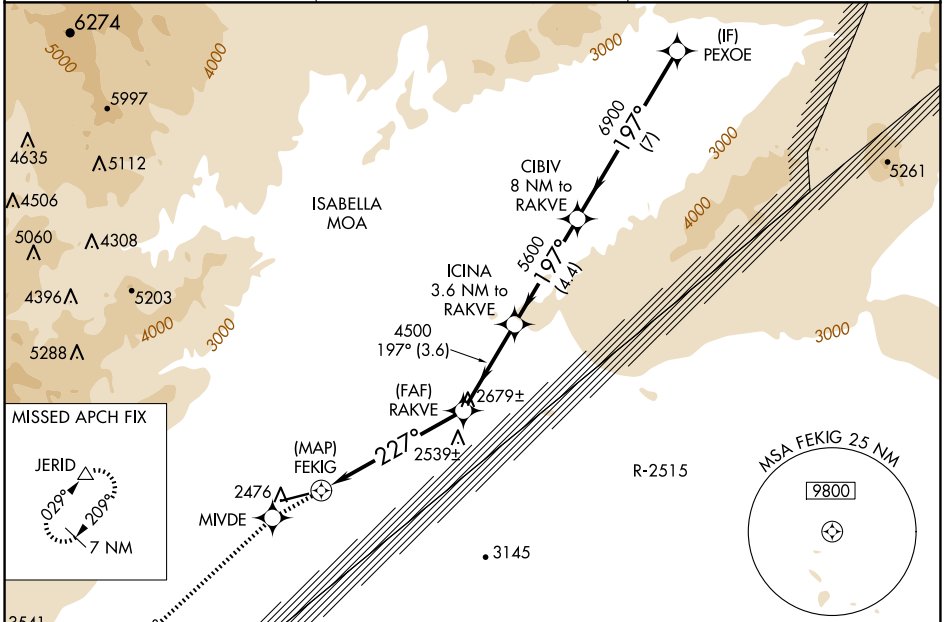
RNP APCH.

▼ If local altimeter setting not received, use Edwards AFB altimeter setting and increase all MDAs 60 feet; if neither received, procedure not authorized.

▲ NA

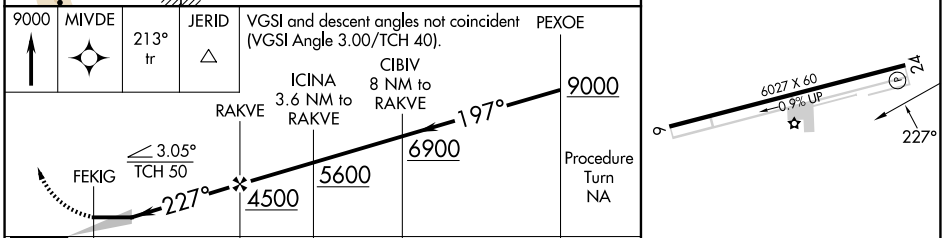
MISSED APPROACH: Climb to 9000 direct MIVDE and via 213° track to JERID and hold, continue climb-in-hold to 9000.

AWOS-1 120.875	JOSHUA APP CON 133.65 348.7	UNICOM 122.7 (CTAF) ①
--------------------------	---------------------------------------	---------------------------------



ELEV 2454	TDZE 2429
-----------	-----------

RADAR REQUIRED



CATEGORY	A	B	C	D
LNAV MDA	2820-1 391 (400-1)			NA
CIRCLING	2960-1	506 (600-1)	3080-1¾ 626 (700-1¾)	NA

MRL Rwy 6-24 ①
REL Rwy 24 ①

SW-3, 19 MAR 2026 to 16 APR 2026

SW-3, 19 MAR 2026 to 16 APR 2026